

Datasheet for ABIN625820
anti-CROT antibody (C-Term)

3 Images

[Go to Product page](#)

Overview

Quantity:	100 µg
Target:	CROT
Binding Specificity:	C-Term
Reactivity:	Human, Rat
Host:	Goat
Clonality:	Polyclonal
Conjugate:	This CROT antibody is un-conjugated
Application:	Western Blotting (WB), ELISA, Immunohistochemistry (IHC)

Product Details

Purpose:	Crot (rat)
Immunogen:	RSCLETDAEKLVE
Sequence:	RSCLETDAEK LVE
Isotype:	IgG
Cross-Reactivity:	Rat
Purification:	Purified from goat serum by ammonium sulphate precipitation followed by antigen affinity chromatography using the immunizing peptide.
Grade:	Verified

Target Details

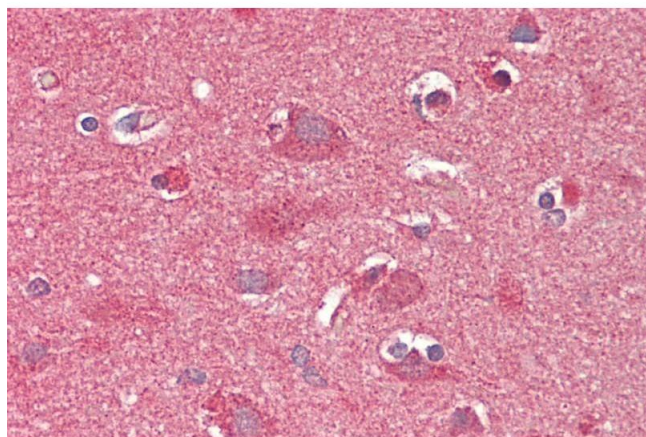
Target:	CROT
Alternative Name:	Crot (CROT Products)
Background:	Crot, carnitine O-octanoyltransferase, COT, peroxisomal carnitine O-octanoyltransferase
Gene ID:	83842
NCBI Accession:	NP_114193
Pathways:	Monocarboxylic Acid Catabolic Process

Application Details

Application Notes:	<p>Immunohistochemistry: Paraffin embedded Human Brain (Cortex) and Liver. Recommended concentration: 5 µg/mL.</p> <p>Western Blot: Approx 75 kDa band observed in Rat Kidney lysates (calculated MW of 70.3 kDa according to NP_114193.1). Recommended concentration: 0.3-1 µg/mL. Primary incubation was 1 hour.</p> <p>Peptide ELISA: antibody detection limit dilution 1:32000.</p>
Restrictions:	For Research Use only

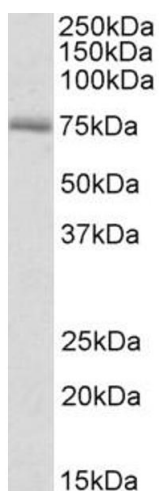
Handling

Format:	Liquid
Concentration:	0.5 mg/mL
Buffer:	Supplied at 0.5 mg/mL in Tris saline, 0.02 % sodium azide, pH 7.3 with 0.5 % bovine serum albumin.
Preservative:	Sodium azide
Precaution of Use:	This product contains Sodium azide: a POISONOUS AND HAZARDOUS SUBSTANCE which should be handled by trained staff only.
Handling Advice:	Minimize freezing and thawing.
Storage:	-20 °C
Storage Comment:	Aliquot and store at -20°C, with minimal freeze/thawing. A working aliquot may be refrigerated at 4°C for a few weeks and still remain viable.



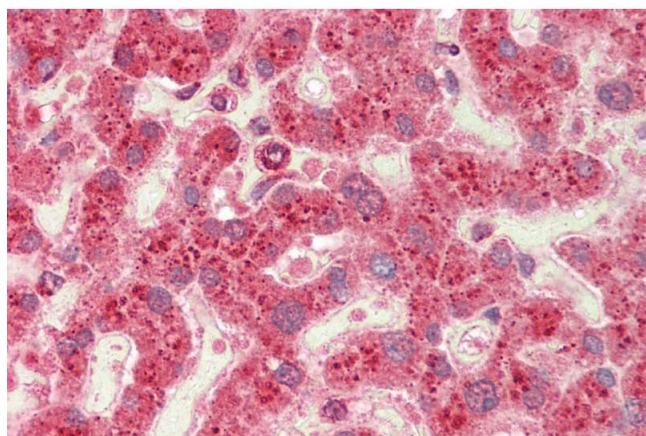
Immunohistochemistry

Image 1. ABIN625820 (5µg/ml) staining of paraffin embedded Human Cortex. Steamed antigen retrieval with citrate buffer pH 6, AP-staining.



Western Blotting

Image 2. ABIN625820 (0.3µg/ml) staining of Rat Kidney lysate (35µg protein in RIPA buffer). Detected by chemiluminescence.



Immunohistochemistry

Image 3. ABIN625820 (5µg/ml) staining of paraffin embedded Human Liver. Steamed antigen retrieval with citrate buffer pH 6, AP-staining.