

Datasheet for ABIN6258204

anti-GPR56 antibody**2** Images[Go to Product page](#)

Overview

Quantity:	100 µL
Target:	GPR56
Reactivity:	Human
Host:	Rabbit
Clonality:	Polyclonal
Conjugate:	This GPR56 antibody is un-conjugated
Application:	Western Blotting (WB), ELISA, Immunohistochemistry (IHC)

Product Details

Immunogen:	A synthesized peptide
Isotype:	IgG
Specificity:	GPR56 antibody detects endogenous levels of total GPR56
Cross-Reactivity:	Human
Purification:	The antiserum was purified by peptide affinity chromatography using SulfoLink™ Coupling Resin (Thermo Fisher Scientific).

Target Details

Target:	GPR56
Alternative Name:	GPR56 (GPR56 Products)
Background:	Description: Receptor involved in cell adhesion and probably in cell-cell interactions. Mediates

Target Details

cell matrix adhesion in developing neurons and hematopoietic stem cells. Receptor for collagen III/COL3A1 in the developing brain and involved in regulation of cortical development, specifically in maintenance of the pial basement membrane integrity and in cortical lamination (By similarity). Binding to the COL3A1 ligand inhibits neuronal migration and activates the RhoA pathway by coupling to GNA13 and possibly GNA12 (PubMed:22238662). Plays a role in the maintenance of hematopoietic stem cells and/or leukemia stem cells in bone marrow niche (By similarity). Plays a critical role in cancer progression by inhibiting VEGFA production thereby inhibiting angiogenesis through a signaling pathway mediated by PRKCA (PubMed:16757564, PubMed:21724588). Plays an essential role in testis development (By similarity).

Gene: ADGRG1

Molecular Weight: 78 kDa

Gene ID: 9289

UniProt: [Q9Y653](#)

Application Details

Application Notes: WB 1:500-1:2000 IHC 1:50-1:200

Restrictions: For Research Use only

Handling

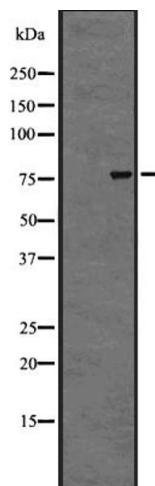
Format: Liquid

Concentration: 1 mg/mL

Buffer: Rabbit IgG in phosphate buffered saline, pH 7.4, 150 mM NaCl, 0.02 % sodium azide and 50 % glycerol.

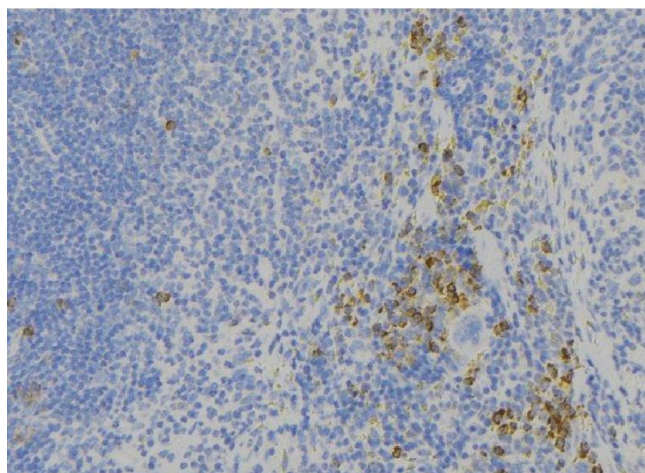
Preservative: Sodium azide

Precaution of Use: This product contains Sodium azide: a POISONOUS AND HAZARDOUS SUBSTANCE which should be handled by trained staff only.



Western Blotting

Image 1. Western blot analysis of GPR56 expression in A431 whole cell lysate. The lane on the left is treated with the antigen-specific peptide.



Immunohistochemistry

Image 2. ABIN6273883 at 1/100 staining Human lymph node tissue by IHC-P. The sample was formaldehyde fixed and a heat mediated antigen retrieval step in citrate buffer was performed. The sample was then blocked and incubated with the antibody for 1.5 hours at 22°C. An HRP conjugated goat anti-rabbit antibody was used as the secondary