

Datasheet for ABIN6258205
anti-GPR148 antibody



[Go to Product page](#)

3 Images

Overview

Quantity:	100 µL
Target:	GPR148
Reactivity:	Human, Rat
Host:	Rabbit
Clonality:	Polyclonal
Conjugate:	This GPR148 antibody is un-conjugated
Application:	Immunohistochemistry (IHC), ELISA, Western Blotting (WB)

Product Details

Immunogen:	A synthesized peptide
Isotype:	IgG
Specificity:	GPR148 antibody detects endogenous levels of total GPR148
Cross-Reactivity:	Human, Rat (Rattus)
Purification:	The antiserum was purified by peptide affinity chromatography using SulfoLink™ Coupling Resin (Thermo Fisher Scientific).

Target Details

Target:	GPR148
Alternative Name:	GPR148 (GPR148 Products)
Background:	Description: Orphan receptor.

Target Details

Gene: GPR148

Molecular Weight: 61 kDa

Gene ID: 344561

UniProt: [Q8TDV2](#)

Application Details

Application Notes: WB 1:500-1:2000 IHC 1:50-1:200

Restrictions: For Research Use only

Handling

Format: Liquid

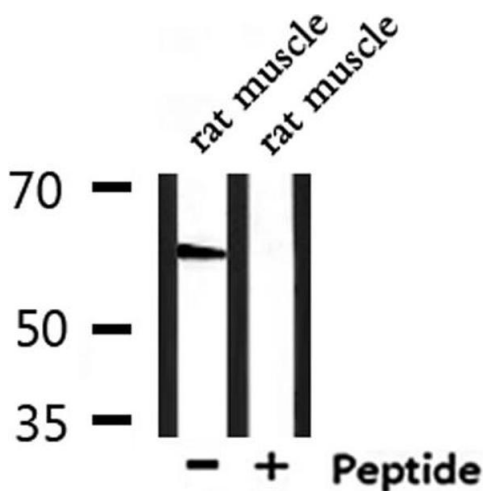
Concentration: 1 mg/mL

Buffer: Rabbit IgG in phosphate buffered saline, pH 7.4, 150 mM NaCl, 0.02 % sodium azide and 50 % glycerol.

Preservative: Sodium azide

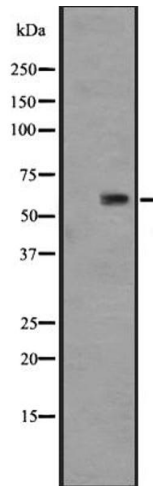
Precaution of Use: This product contains Sodium azide: a POISONOUS AND HAZARDOUS SUBSTANCE which should be handled by trained staff only.

Images



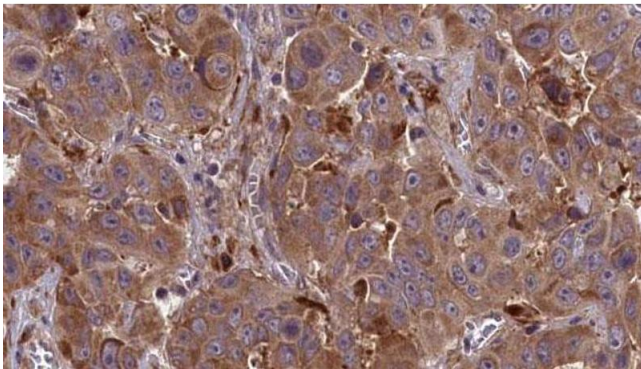
Western Blotting

Image 1. Western blot analysis of extracts from rat muscle, using GPR148 Antibody.



Western Blotting

Image 2. Western blot analysis of GPR148 expression in HT29 cell lysate ;The lane on the left is treated with the antigen-specific peptide.



Immunohistochemistry

Image 3. ABIN6273856 at 1/100 staining Human liver cancer tissue by IHC-P. The sample was formaldehyde fixed and a heat mediated antigen retrieval step in citrate buffer was performed. The sample was then blocked and incubated with the antibody for 1.5 hours at 22°C. An HRP conjugated goat anti-rabbit antibody was used as the secondary.