

Datasheet for ABIN625822
anti-CD28 antibody (Internal Region)

3 Images

[Go to Product page](#)

Overview

Quantity:	100 µg
Target:	CD28
Binding Specificity:	Internal Region
Reactivity:	Human
Host:	Goat
Clonality:	Polyclonal
Conjugate:	This CD28 antibody is un-conjugated
Application:	Western Blotting (WB), ELISA, Immunohistochemistry (IHC)

Product Details

Purpose:	CD28
Immunogen:	SQQLQVYSKTGFNCD
Sequence:	SQQLQVYSKT GFNCD
Isotype:	IgG
Specificity:	The immunizing peptide corresponds to a part of the extracellular domain.
Cross-Reactivity:	Human
Purification:	Purified from goat serum by ammonium sulphate precipitation followed by antigen affinity chromatography using the immunizing peptide.
Grade:	Verified

Target Details

Target:	CD28
Alternative Name:	CD28 (CD28 Products)
Background:	CD28, CD28 Molecule, MGC138290, Tp44, CD28 antigen, CD28 antigen (Tp44), T-cell-specific surface glycoprotein
Gene ID:	940
NCBI Accession:	NP_006130
Pathways:	TCR Signaling , Fc-epsilon Receptor Signaling Pathway , EGFR Signaling Pathway , Regulation of Leukocyte Mediated Immunity , Positive Regulation of Immune Effector Process , Production of Molecular Mediator of Immune Response

Application Details

Application Notes:	<p>Immunohistochemistry: In paraffin embedded Human Lymph Node shows membrane staining in the paracortex. Recommended concentration: 1-2 µg/mL.</p> <p>Western Blot: Approx 48 kDa band observed in Human Lymph Node and Tonsil lysates (calculated MW of 25.1 kDa according to NP_006130.1). The observed molecular weight corresponds to the glycosylated form. Recommended concentration: 0.3-1 µg/mL. Primary incubation</p> <p>Peptide ELISA: antibody detection limit dilution 1:64000.</p>
Restrictions:	For Research Use only

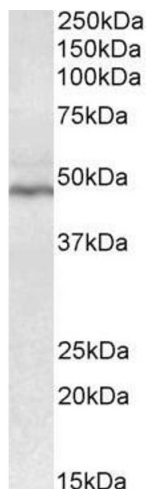
Handling

Format:	Liquid
Concentration:	0.5 mg/mL
Buffer:	Supplied at 0.5 mg/mL in Tris saline, 0.02 % sodium azide, pH 7.3 with 0.5 % bovine serum albumin.
Preservative:	Sodium azide
Precaution of Use:	This product contains Sodium azide: a POISONOUS AND HAZARDOUS SUBSTANCE which should be handled by trained staff only.
Handling Advice:	Minimize freezing and thawing.
Storage:	-20 °C

Handling

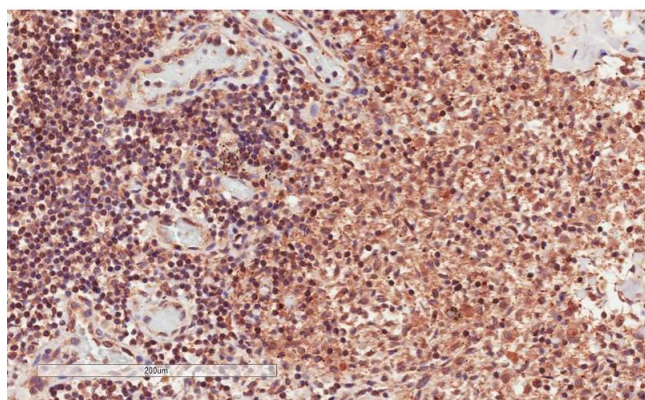
Storage Comment: Aliquot and store at -20°C, with minimal freeze/thawing. A working aliquot may be refrigerated at 4°C for a few weeks and still remain viable.

Images



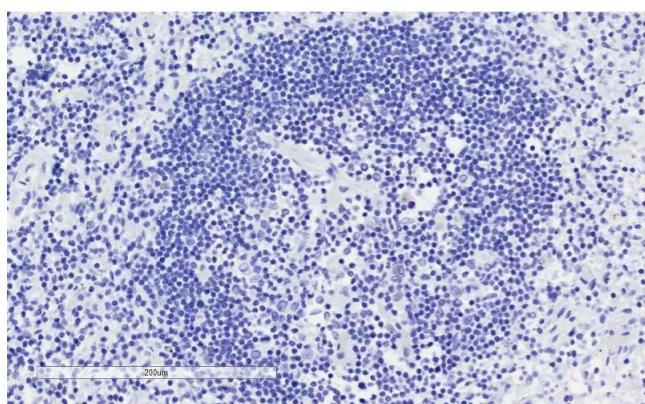
Western Blotting

Image 1. ABIN625822 (0.3µg/ml) staining of Human Tonsil lysate (35µg protein in RIPA buffer). Detected by chemiluminescence.



Immunohistochemistry

Image 2. ABIN625822 (2µg/ml) staining of paraffin embedded Human Lymph Node. Microwaved antigen retrieval with citrate buffer Ph 6, HRP-staining.



Immunohistochemistry

Image 3. ABIN625822 Negative Control showing staining of paraffin embedded Human Lymph Node, with no primary antibody.