

## Datasheet for ABIN6258225 anti-GRIN2D antibody (Internal Region)

[Go to Product page](#)

### 1 Image

#### Overview

Quantity:	100 µL
Target:	GRIN2D
Binding Specificity:	Internal Region
Reactivity:	Human, Mouse, Rat
Host:	Rabbit
Clonality:	Polyclonal
Conjugate:	This GRIN2D antibody is un-conjugated
Application:	ELISA, Western Blotting (WB), Immunofluorescence (IF), Immunocytochemistry (ICC)

#### Product Details

Immunogen:	A synthesized peptide derived from human GRIN2D, corresponding to a region within the internal amino acids.
Isotype:	IgG
Specificity:	GRIN2D Antibody detects endogenous levels of total GRIN2D.
Predicted Reactivity:	Pig,Bovine,Rabbit,Dog
Purification:	The antiserum was purified by peptide affinity chromatography using SulfoLink™ Coupling Resin (Thermo Fisher Scientific).

#### Target Details

Target:	GRIN2D
---------	--------

## Target Details

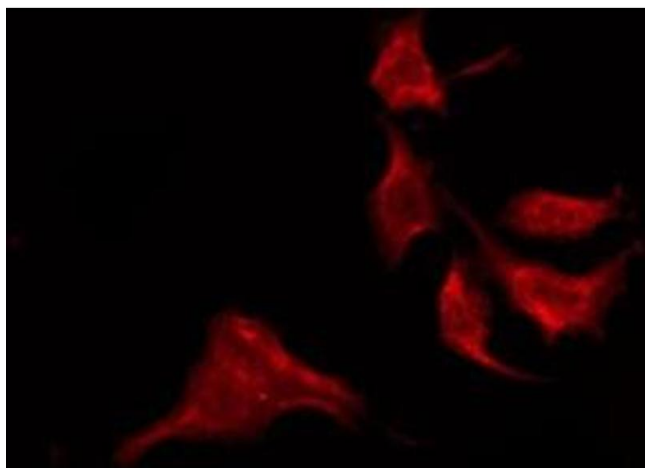
Alternative Name:	GRIN2D ( <a href="#">GRIN2D Products</a> )
Background:	<p>Description: Component of NMDA receptor complexes that function as heterotetrameric, ligand-gated ion channels with high calcium permeability and voltage-dependent sensitivity to magnesium. Channel activation requires binding of the neurotransmitter glutamate to the epsilon subunit, glycine binding to the zeta subunit, plus membrane depolarization to eliminate channel inhibition by Mg<sup>2+</sup> (PubMed:9489750, PubMed:27616483, PubMed:26875626, PubMed:28126851). Sensitivity to glutamate and channel kinetics depend on the subunit composition (PubMed:9489750).</p> <p>Gene: GRIN2D</p>
Molecular Weight:	170 kDa
Gene ID:	2906
UniProt:	<a href="#">O15399</a>
Pathways:	<a href="#">Synaptic Membrane</a>

## Application Details

Application Notes:	WB 1:500-1:1000, IF/ICC 1:100-1:500, ELISA(peptide) 1:20000-1:40000
Restrictions:	For Research Use only

## Handling

Format:	Liquid
Concentration:	1 mg/mL
Buffer:	Rabbit IgG in phosphate buffered saline , pH 7.4, 150 mM NaCl, 0.02 % sodium azide and 50 % glycerol.
Preservative:	Sodium azide
Precaution of Use:	This product contains Sodium azide: a POISONOUS AND HAZARDOUS SUBSTANCE which should be handled by trained staff only.
Storage:	-20 °C
Storage Comment:	Store at -20 °C. Stable for 12 months from date of receipt.
Expiry Date:	12 months



#### Immunofluorescence (fixed cells)

**Image 1.** ABIN6275154 staining HeLa by IF/ICC. The sample were fixed with PFA and permeabilized in 0.1% Triton X-100, then blocked in 10% serum for 45 minutes at 25°C. The primary antibody was diluted at 1/200 and incubated with the sample for 1 hour at 37°C. An Alexa Fluor 594 conjugated goat anti-rabbit IgG (H+L) Ab, diluted at 1/600, was used as the secondary antibody