

Datasheet for ABIN6258234  
**anti-Ube2t antibody (Internal Region)**[Go to Product page](#)

## 1 Image

## Overview

Quantity:	100 µL
Target:	Ube2t
Binding Specificity:	Internal Region
Reactivity:	Human, Mouse
Host:	Rabbit
Clonality:	Polyclonal
Conjugate:	This Ube2t antibody is un-conjugated
Application:	Western Blotting (WB), ELISA, Immunofluorescence (IF), Immunocytochemistry (ICC)

## Product Details

Immunogen:	A synthesized peptide derived from human UBE2T, corresponding to a region within the internal amino acids.
Isotype:	IgG
Specificity:	UBE2T Antibody detects endogenous levels of total UBE2T.
Predicted Reactivity:	Pig,Zebrafish,Bovine,Horse,Sheep,Rabbit,Dog,Chicken,Xenopus
Purification:	The antiserum was purified by peptide affinity chromatography using SulfoLink™ Coupling Resin (Thermo Fisher Scientific).

## Target Details

Target:	Ube2t
---------	-------

## Target Details

Alternative Name:	UBE2T ( <a href="#">Ube2t Products</a> )
Background:	<p>Description: Accepts ubiquitin from the E1 complex and catalyzes its covalent attachment to other proteins. Catalyzes monoubiquitination. Involved in mitomycin-C (MMC)-induced DNA repair. Acts as a specific E2 ubiquitin-conjugating enzyme for the Fanconi anemia complex by associating with E3 ubiquitin-protein ligase FANCL and catalyzing monoubiquitination of FANCD2, a key step in the DNA damage pathway (PubMed:16916645, PubMed:17938197, PubMed:19111657, PubMed:19589784, PubMed:28437106). Also mediates monoubiquitination of FANCL and FANCI (PubMed:16916645, PubMed:17938197, PubMed:19111657, PubMed:19589784). May contribute to ubiquitination and degradation of BRCA1 (PubMed:19887602). In vitro able to promote polyubiquitination using all 7 ubiquitin Lys residues, but may prefer 'Lys-11', 'Lys-27', 'Lys-48' and 'Lys-63'-linked polyubiquitination (PubMed:20061386).</p> <p>Gene: UBE2T</p>
Molecular Weight:	22 kDa
Gene ID:	29089
UniProt:	<a href="#">Q9NPD8</a>
Pathways:	<a href="#">Chromatin Binding</a>

## Application Details

Application Notes:	WB 1:500-1:1000, IF/ICC 1:100-1:500, ELISA(peptide) 1:20000-1:40000
Restrictions:	For Research Use only

## Handling

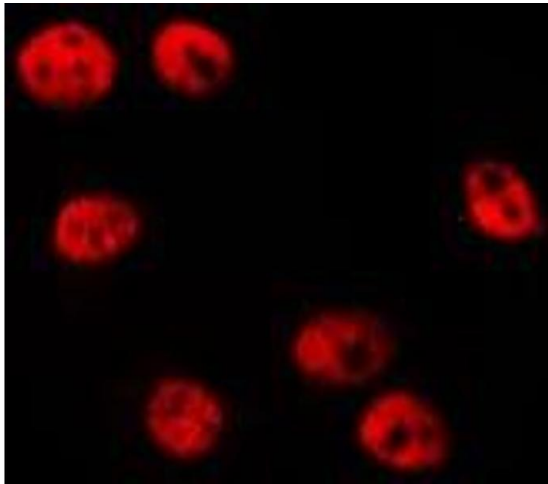
Format:	Liquid
Concentration:	1 mg/mL
Buffer:	Rabbit IgG in phosphate buffered saline , pH 7.4, 150 mM NaCl, 0.02 % sodium azide and 50 % glycerol.
Preservative:	Sodium azide
Precaution of Use:	This product contains Sodium azide: a POISONOUS AND HAZARDOUS SUBSTANCE which should be handled by trained staff only.
Storage:	-20 °C

## Handling

Storage Comment: Store at -20 °C. Stable for 12 months from date of receipt.

Expiry Date: 12 months

## Images



### Immunofluorescence (fixed cells)

**Image 1.** ABIN6275665 staining HepG2 by IF/ICC. The sample were fixed with PFA and permeabilized in 0.1% Triton X-100, then blocked in 10% serum for 45 minutes at 25°C. The primary antibody was diluted at 1/200 and incubated with the sample for 1 hour at 37°C. An Alexa Fluor 594 conjugated goat anti-rabbit IgG (H+L) Ab, diluted at 1/600, was used as the secondary antibody.