

Datasheet for ABIN6258236

**anti-MRPL18 antibody****2** Images[Go to Product page](#)

## Overview

Quantity:	100 µL
Target:	MRPL18
Reactivity:	Human
Host:	Rabbit
Clonality:	Polyclonal
Conjugate:	This MRPL18 antibody is un-conjugated
Application:	ELISA, Western Blotting (WB), Immunofluorescence (IF), Immunocytochemistry (ICC)

## Product Details

Immunogen:	A synthesized peptide
Isotype:	IgG
Specificity:	MRPL18 Antibody detects endogenous levels of total MRPL18
Cross-Reactivity:	Human
Purification:	The antiserum was purified by peptide affinity chromatography using SulfoLink™ Coupling Resin (Thermo Fisher Scientific).

## Target Details

Target:	MRPL18
Alternative Name:	MRPL18 ( <a href="#">MRPL18 Products</a> )
Background:	Description: Together with thiosulfate sulfurtransferase (TST), acts as a mitochondrial import

## Target Details

factor for the cytosolic 5S rRNA. The precursor form shows RNA chaperone activity, is able to fold the 5S rRNA into an import-competent conformation that is recognized by rhodanese (TST). Both the cytoplasmic and mitochondrial forms are able to bind to the helix IV-loop D in the gamma domain of the 5S rRNA.

Gene: MRPL18

Molecular Weight: 21 kDa

Gene ID: 29074

UniProt: [Q9H0U6](#)

## Application Details

Application Notes: WB 1:500~1:1000, IF/ICC 1:100-1:500

Restrictions: For Research Use only

## Handling

Format: Liquid

Concentration: 1 mg/mL

Buffer: Rabbit IgG in phosphate buffered saline , pH 7.4, 150 mM NaCl, 0.02 % sodium azide and 50 % glycerol.

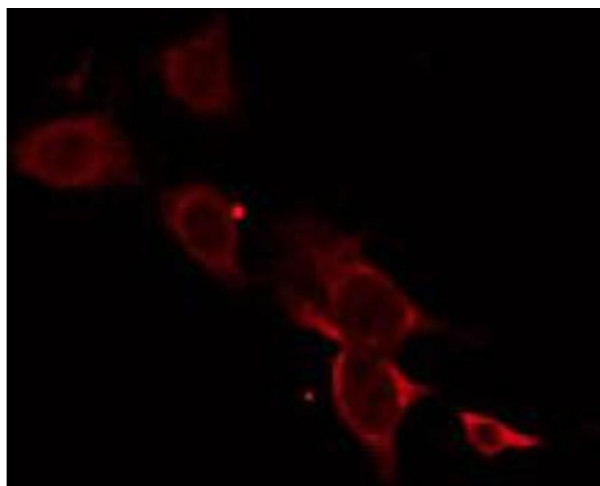
Preservative: Sodium azide

Precaution of Use: This product contains Sodium azide: a POISONOUS AND HAZARDOUS SUBSTANCE which should be handled by trained staff only.

Storage: -20 °C

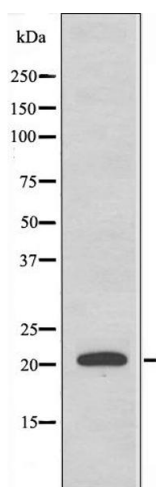
Storage Comment: Store at -20 °C.Stable for 12 months from date of receipt

Expiry Date: 12 months



#### Immunofluorescence (fixed cells)

**Image 1.** ABIN6274733 staining HT29 by IF/ICC. The sample were fixed with PFA and permeabilized in 0.1% Triton X-100, then blocked in 10% serum for 45 minutes at 25°C. The primary antibody was diluted at 1/200 and incubated with the sample for 1 hour at 37°C. An Alexa Fluor 594 conjugated goat anti-rabbit IgG (H+L) Ab, diluted at 1/600, was used as the secondary antibody.



#### Western Blotting

**Image 2.** Western blot analysis of extracts from HT-29 cells, using MRPL18 antibody.