

Datasheet for ABIN625824
anti-SDF4 antibody (AA 161-175)

2 Images

[Go to Product page](#)

Overview

Quantity:	100 µg
Target:	SDF4
Binding Specificity:	AA 161-175
Reactivity:	Human
Host:	Goat
Clonality:	Polyclonal
Conjugate:	This SDF4 antibody is un-conjugated
Application:	Western Blotting (WB), ELISA, Immunohistochemistry (IHC), Immunofluorescence (IF), Flow Cytometry (FACS)

Product Details

Purpose:	SDF4 (aa161-175)
Immunogen:	CEYKVKFLASKGHSEK
Sequence:	EYKVKFLASK GHSEK
Isotype:	IgG
Specificity:	This antibody is expected to recognize both reported isoforms NP_057631.2, and NP_057260.3
Cross-Reactivity:	Cow, Dog, Human, Mouse, Rat
Purification:	Purified from goat serum by ammonium sulphate precipitation followed by antigen affinity chromatography using the immunizing peptide.
Grade:	Verified

Target Details

Target:	SDF4
Alternative Name:	SDF4 (SDF4 Products)
Background:	SDF4, stromal cell derived factor 4, Cab45, 45 kDa calcium-binding protein, OTTHUMP00000001754, SDF-4, calcium binding protein, stromal cell-derived factor 4
Gene ID:	51150, 20318, 155173
NCBI Accession:	NP_057631 , NP_057260

Application Details

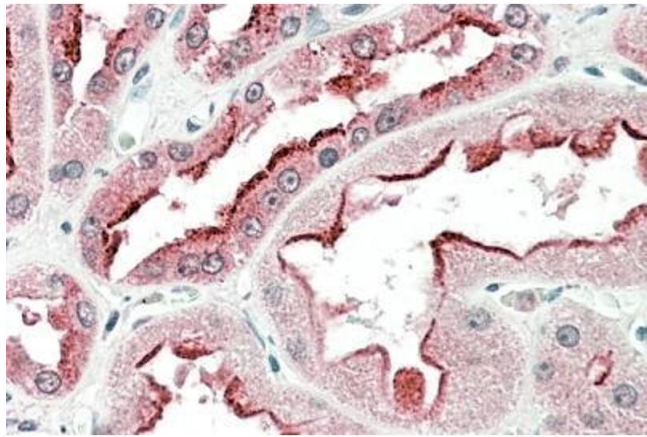
Application Notes:	Immunohistochemistry: In paraffin embedded Human Kidney shows preferential staining in the brush borders of epithelial cells. Recommended concentration: 5-10 µg/mL. Western Blot: Approx 45 kDa band observed in lysates of cell lines Jurkat, HeLa and U251 (calculated MW of 41.8 kDa according to NP_057260.2). Recommended concentration: 0.1-0.3 µg/mL. Primary incubation 1 hour at room temperature. Peptide ELISA: antibody detection limit dilution 1:64000.
Comment:	Immunofluorescence: Strong expression of the protein seen in the golgi and cytoplasm of U2OS cells. Recommended concentration: 10µg/ml. Flow Cytometry: Flow cytometric analysis of A431 cells. Recommended concentration:
Restrictions:	For Research Use only

Handling

Format:	Liquid
Concentration:	0.5 mg/mL
Buffer:	Supplied at 0.5 mg/mL in Tris saline, 0.02 % sodium azide, pH 7.3 with 0.5 % bovine serum albumin.
Preservative:	Sodium azide
Precaution of Use:	This product contains Sodium azide: a POISONOUS AND HAZARDOUS SUBSTANCE which should be handled by trained staff only.
Handling Advice:	Minimize freezing and thawing.
Storage:	-20 °C
Storage Comment:	Aliquot and store at -20°C, with minimal freeze/thawing. A working aliquot may be refrigerated

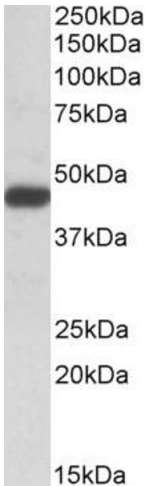
at 4°C for a few weeks and still remain viable.

Images



Immunohistochemistry

Image 1. ABIN625824 (5µg/ml) staining of paraffin embedded Human Kidney. Steamed antigen retrieval with citrate buffer pH 6, AP-staining.



Western Blotting

Image 2. ABIN625824 (0.1µg/ml) staining of Jurkat lysate (35µg protein in RIPA buffer). Detected by chemiluminescence.