



[Go to Product page](#)

Datasheet for ABIN6258251

anti-Keratin 82 antibody (C-Term)

1 Image

Overview

Quantity:	100 µL
Target:	Keratin 82 (KRT82)
Binding Specificity:	C-Term
Reactivity:	Human, Mouse
Host:	Rabbit
Clonality:	Polyclonal
Conjugate:	This Keratin 82 antibody is un-conjugated
Application:	Western Blotting (WB), ELISA

Product Details

Immunogen:	A synthesized peptide derived from human KRT82, corresponding to a region within C-terminal amino acids.
Isotype:	IgG
Specificity:	KRT82 Antibody detects endogenous levels of total KRT82.
Purification:	The antiserum was purified by peptide affinity chromatography using SulfoLink™ Coupling Resin (Thermo Fisher Scientific).

Target Details

Target:	Keratin 82 (KRT82)
Alternative Name:	KRT82 (KRT82 Products)

Target Details

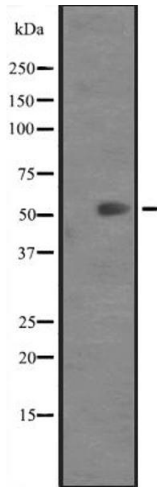
Background:	Description: There are two types of hair/microfibrillar keratin, I (acidic) and II (neutral to basic). Gene: KRT82
Molecular Weight:	57 kDa
Gene ID:	3888
UniProt:	Q9NSB4

Application Details

Application Notes:	WB 1:500-1:2000, ELISA(peptide) 1:20000-1:40000
Restrictions:	For Research Use only

Handling

Format:	Liquid
Concentration:	1 mg/mL
Buffer:	Rabbit IgG in phosphate buffered saline, pH 7.4, 150 mM NaCl, 0.02 % sodium azide and 50 % glycerol.
Preservative:	Sodium azide
Precaution of Use:	This product contains Sodium azide: a POISONOUS AND HAZARDOUS SUBSTANCE which should be handled by trained staff only.
Storage:	-20 °C
Expiry Date:	12 months



Western Blotting

Image 1. Western blot analysis of KRT82 expression in Mouse heart tissue lysates ,The lane on the left is treated with the antigen-specific peptide.