

Datasheet for ABIN6258256  
**anti-LRG1 antibody (C-Term)**[Go to Product page](#)

## 3 Images

## Overview

Quantity:	100 µL
Target:	LRG1
Binding Specificity:	C-Term
Reactivity:	Human
Host:	Rabbit
Clonality:	Polyclonal
Conjugate:	This LRG1 antibody is un-conjugated
Application:	Western Blotting (WB), ELISA, Immunocytochemistry (ICC), Immunofluorescence (IF)

## Product Details

Immunogen:	A synthesized peptide derived from human LRG1, corresponding to a region within C-terminal amino acids.
Isotype:	IgG
Specificity:	LRG1 Antibody detects endogenous levels of total LRG1.
Purification:	The antiserum was purified by peptide affinity chromatography using SulfoLink™ Coupling Resin (Thermo Fisher Scientific).

## Target Details

Target:	LRG1
Alternative Name:	LRG1 ( <a href="#">LRG1 Products</a> )

## Target Details

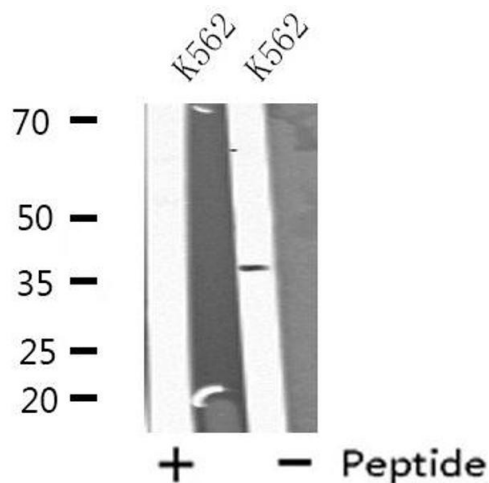
Background:	Gene: LRG1
Molecular Weight:	37 kDa
Gene ID:	116844
UniProt:	<a href="#">P02750</a>
Pathways:	<a href="#">Brown Fat Cell Differentiation</a>

## Application Details

Application Notes:	WB 1:500-1:1000, IF/ICC 1:100-1:500, ELISA(peptide) 1:20000-1:40000
Restrictions:	For Research Use only

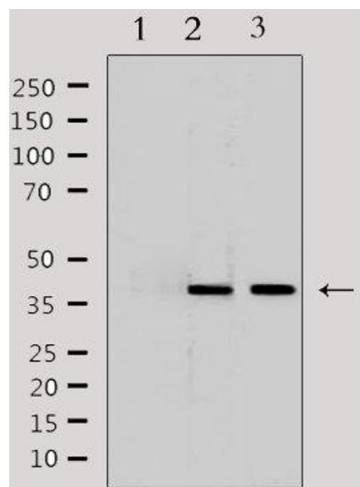
## Handling

Format:	Liquid
Concentration:	1 mg/mL
Buffer:	Rabbit IgG in phosphate buffered saline , pH 7.4, 150 mM NaCl, sodium azide and glycerol.
Preservative:	Sodium azide
Precaution of Use:	This product contains Sodium azide: a POISONOUS AND HAZARDOUS SUBSTANCE which should be handled by trained staff only.
Storage:	-20 °C
Storage Comment:	Store at -20 °C. Stable for 12 months from date of receipt.
Expiry Date:	12 months



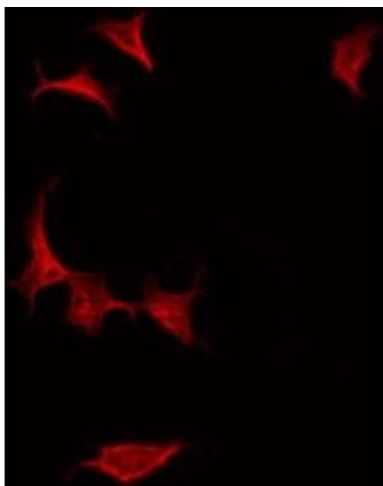
Western Blotting

**Image 1.** Western blot analysis of extracts from K562 cells, using A2GL antibody.



Western Blotting

**Image 2.** Western blot analysis of extracts from various samples, using LRG1 Antibody. Lane 1: 293 treated with blocking peptide; Lane 2: 293; Lane 3: hela;



Immunofluorescence (fixed cells)

**Image 3.** ABIN6275204 staining HeLa by IF/ICC. The sample were fixed with PFA and permeabilized in 0.1% Triton X-100, then blocked in 10% serum for 45 minutes at 25°C. The primary antibody was diluted at 1/200 and incubated with the sample for 1 hour at 37°C. An Alexa Fluor 594 conjugated goat anti-rabbit IgG (H+L) Ab, diluted at 1/600, was used as the secondary antibody.