

Datasheet for ABIN6258288
anti-NSF antibody (Internal Region)[Go to Product page](#)

2 Images

Overview

Quantity:	100 µL
Target:	NSF
Binding Specificity:	Internal Region
Reactivity:	Human, Rat, Mouse
Host:	Rabbit
Clonality:	Polyclonal
Conjugate:	This NSF antibody is un-conjugated
Application:	Western Blotting (WB), ELISA, Immunocytochemistry (ICC), Immunofluorescence (IF)

Product Details

Immunogen:	A synthesized peptide derived from human NSF, corresponding to a region within the internal amino acids.
Isotype:	IgG
Specificity:	NSF Antibody detects endogenous levels of total NSF.
Predicted Reactivity:	Pig,Horse,Sheep,Rabbit,Dog
Purification:	The antiserum was purified by peptide affinity chromatography using SulfoLink™ Coupling Resin (Thermo Fisher Scientific).

Target Details

Target:	NSF
---------	-----

Target Details

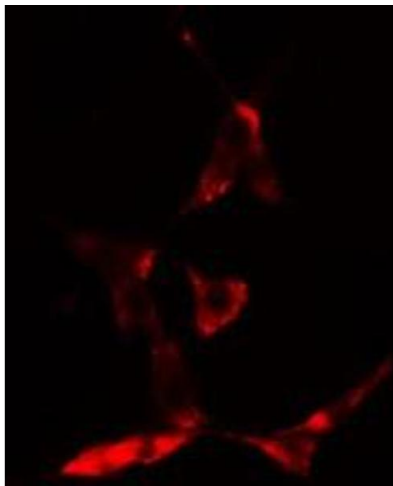
Alternative Name:	NSF (NSF Products)
Background:	<p>Description: Required for vesicle-mediated transport. Catalyzes the fusion of transport vesicles within the Golgi cisternae. Is also required for transport from the endoplasmic reticulum to the Golgi stack. Seems to function as a fusion protein required for the delivery of cargo proteins to all compartments of the Golgi stack independent of vesicle origin. Interaction with AMPAR subunit GRIA2 leads to influence GRIA2 membrane cycling (By similarity).</p> <p>Gene: NSF</p>
Molecular Weight:	75 kDa
Gene ID:	4905
UniProt:	P46459

Application Details

Application Notes:	WB 1:500-1:1000, IF/ICC 1:100-1:500, ELISA(peptide) 1:20000-1:40000
Restrictions:	For Research Use only

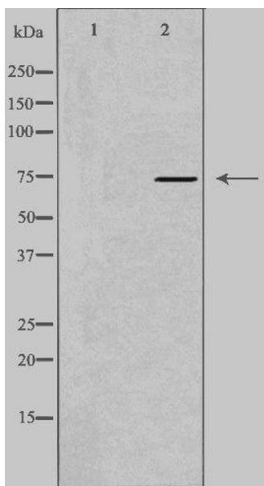
Handling

Format:	Liquid
Concentration:	1 mg/mL
Buffer:	Rabbit IgG in phosphate buffered saline , pH 7.4, 150 mM NaCl, 0.02 % sodium azide and 50 % glycerol.
Preservative:	Sodium azide
Precaution of Use:	This product contains Sodium azide: a POISONOUS AND HAZARDOUS SUBSTANCE which should be handled by trained staff only.
Storage:	-20 °C
Storage Comment:	Store at -20 °C. Stable for 12 months from date of receipt.
Expiry Date:	12 months



Immunofluorescence (fixed cells)

Image 1. ABIN6275675 staining CoLo cells by IF/ICC. The sample were fixed with PFA and permeabilized in 0.1% Triton X-100,then blocked in 10% serum for 45 minutes at 25°C. The primary antibody was diluted at 1/200 and incubated with the sample for 1 hour at 37°C. An Alexa Fluor 594 conjugated goat anti-rabbit IgG (H+L) antibody(Cat.# S0006), diluted at 1/600, was used as secondary antibody



Western Blotting

Image 2. Western blot analysis of extracts from CoLo cells, using NSF antibody.The lane on the left is treated with the antigen-specific peptide.