

Datasheet for ABIN625829  
**anti-Doublecortin antibody (AA 232-242)**[Go to Product page](#)

## 5 Images

## Overview

Quantity:	100 µg
Target:	Doublecortin (DCX)
Binding Specificity:	AA 232-242
Reactivity:	Human, Mouse, Rat
Host:	Goat
Clonality:	Polyclonal
Conjugate:	This Doublecortin antibody is un-conjugated
Application:	Western Blotting (WB), ELISA, Immunohistochemistry (IHC), Immunofluorescence (IF)

## Product Details

Purpose:	Doublecortin / DCX (aa232-242)
Immunogen:	CKTSANMKAPQS
Sequence:	KTSANMKAPQ S
Isotype:	IgG
Specificity:	This antibody is expected to recognize all four reported isoforms (NP_000546.2, NP_835365.1, NP_835364.1, NP_001182482.1). Reported variants represent identical protein: NP_835364.1 and NP_835366.1.
Cross-Reactivity:	Cow, Dog, Human, Mouse, Pig, Rat
Purification:	Purified from goat serum by ammonium sulphate precipitation followed by antigen affinity chromatography using the immunizing peptide.

## Product Details

Grade: Verified

## Target Details

Target: Doublecortin (DCX)

Alternative Name: DCX ([DCX Products](#))

Background: DCX, doublecortin, RP5-914P14.1, DBCN, DC, FLJ51296, LISX, SCLH, XLIS, OTTHUMP00000023860, OTTHUMP00000216316, doublecortex, doublin, lis-X, lissencephalin-X, neuronal migration protein doublecortin

Gene ID: 1641, 13193, 84394

NCBI Accession: [NP\\_000546](#), [NP\\_835365](#), [NP\\_835364](#), [NP\\_001182482](#)

## Application Details

Application Notes: Immunohistochemistry: In paraffin embedded Human Cerebellum shows axonal and incidental nuclear staining. Recommended concentration: 2-4 µg/mL. This antibody has been successfully used in IHC on Rat: Heysieattalab, S et al. (2021) Acta Epileptologica 3, 3  
Western Blot: Approx 45 kDa band observed in Mouse fetal Brain lysates (calculated MW of 49.3 kDa according to Mouse NP\_001103692.1). Recommended concentration: 0.01-0.03 µg/mL. Primary incubation 1 hour at room temperature.  
Peptide ELISA: antibody detection limit dilution 1:32000.

Comment: **Immunofluorescence:** Strong expression of the protein seen in the cytoplasm of HepG2 and KNRK cells. Recommended concentration: 5-10µg/ml.

Restrictions: For Research Use only

## Handling

Format: Liquid

Concentration: 0.5 mg/mL

Buffer: Supplied at 0.5 mg/mL in Tris saline, 0.02 % sodium azide, pH 7.3 with 0.5 % bovine serum albumin.

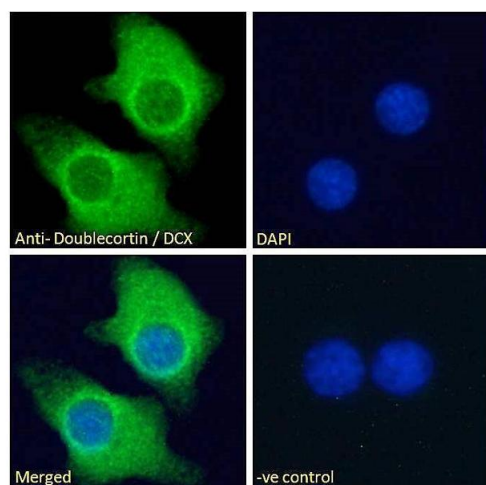
Preservative: Sodium azide

Precaution of Use: This product contains Sodium azide: a POISONOUS AND HAZARDOUS SUBSTANCE which should be handled by trained staff only.

## Handling

Handling Advice:	Minimize freezing and thawing.
Storage:	-20 °C
Storage Comment:	Aliquot and store at -20°C, with minimal freeze/thawing. A working aliquot may be refrigerated at 4°C for a few weeks and still remain viable.

## Images

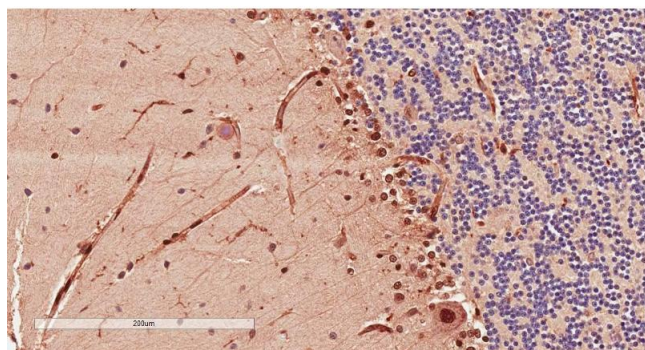


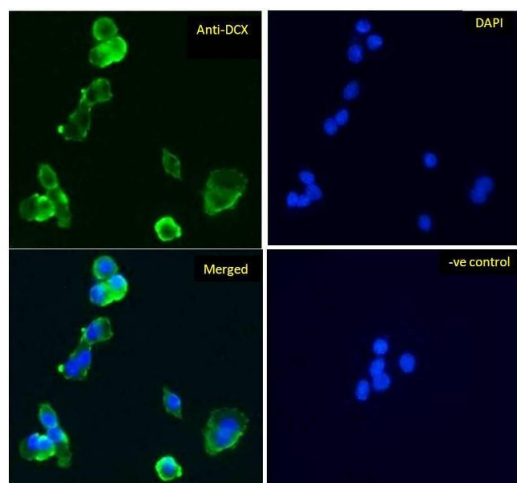
### Immunofluorescence

**Image 1.** ABIN625829 Immunofluorescence analysis of paraformaldehyde fixed KNRK cells, permeabilized with 0.15% Triton. Primary incubation 1hr (10ug/ml) followed by Alexa Fluor 488 secondary antibody (2ug/ml), showing cytoplasmic staining. The nuclear stain is DAPI (blue). Negative control: Unimmunized goat IgG (10ug/ml) followed by Alexa Fluor 488 secondary antibody (2ug/ml).

### Immunohistochemistry

**Image 2.** Antibody (2µg/ml) staining of paraffin embedded Human Cerebellum. Microwaved antigen retrieval with citrate buffer pH 6, HRP-staining.





### Immunofluorescence

**Image 3.** ABIN625829 Immunofluorescence analysis of paraformaldehyde fixed HepG2 cells, permeabilized with 0.15% Triton. Primary incubation 1hr (5ug/ml) followed by Alexa Fluor 488 secondary antibody (1ug/ml), showing cytoplasmic staining. The nuclear stain is DAPI (blue). Negative control: Unimmunized goat IgG (10ug/ml) followed by Alexa Fluor 488 secondary antibody (2ug/ml).

Please check the [product details page](#) for more images. Overall 5 images are available for ABIN625829.