

Datasheet for ABIN6258290  
**anti-NHE7 antibody (Internal Region)**[Go to Product page](#)

## 3 Images

## Overview

Quantity:	100 µL
Target:	NHE7 (SLC9A7)
Binding Specificity:	Internal Region
Reactivity:	Human, Mouse, Rat
Host:	Rabbit
Clonality:	Polyclonal
Conjugate:	This NHE7 antibody is un-conjugated
Application:	ELISA, Western Blotting (WB), Immunocytochemistry (ICC), Immunofluorescence (IF)

## Product Details

Immunogen:	A synthesized peptide derived from human SLC9A7, corresponding to a region within the internal amino acids.
Isotype:	IgG
Specificity:	SLC9A7 Antibody detects endogenous levels of total SLC9A7.
Predicted Reactivity:	Pig,Zebrafish,Bovine,Horse,Sheep,Rabbit,Dog,Chicken
Purification:	The antiserum was purified by peptide affinity chromatography using SulfoLink™ Coupling Resin (Thermo Fisher Scientific).

## Target Details

Target:	NHE7 (SLC9A7)
---------	---------------

## Target Details

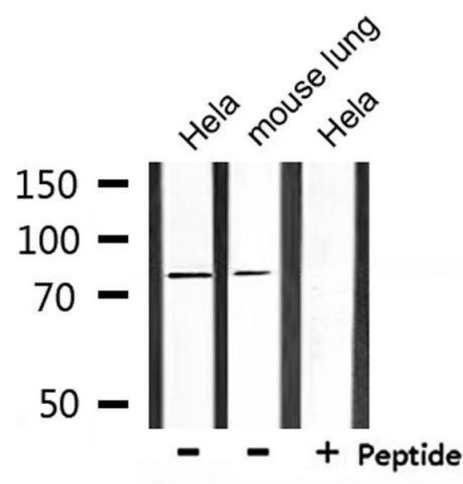
Alternative Name:	SLC9A7 ( <a href="#">SLC9A7 Products</a> )
Background:	Description: Mediates electroneutral exchange of protons for Na <sup>+</sup> and K <sup>+</sup> across endomembranes. May contribute to Golgi volume and cation homeostasis. Gene: SLC9A7
Molecular Weight:	80 kDa
Gene ID:	84679
UniProt:	<a href="#">Q96T83</a>

## Application Details

Application Notes:	WB 1:500-1:1000, IF/ICC 1:100-1:500, ELISA(peptide) 1:20000-1:40000
Restrictions:	For Research Use only

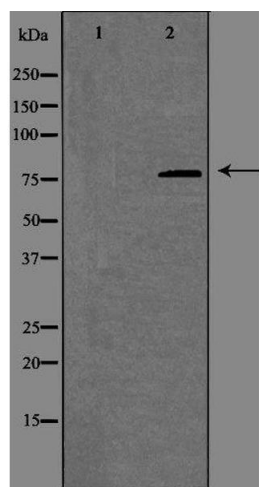
## Handling

Format:	Liquid
Concentration:	1 mg/mL
Buffer:	Rabbit IgG in phosphate buffered saline , pH 7.4, 150 mM NaCl, 0.02 % sodium azide and 50 % glycerol.
Preservative:	Sodium azide
Precaution of Use:	This product contains Sodium azide: a POISONOUS AND HAZARDOUS SUBSTANCE which should be handled by trained staff only.
Storage:	-20 °C
Storage Comment:	Store at -20 °C. Stable for 12 months from date of receipt.
Expiry Date:	12 months



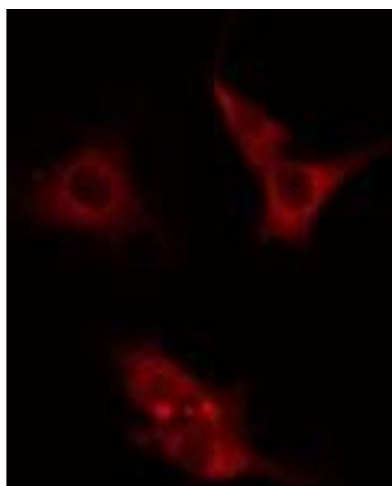
#### Western Blotting

**Image 1.** Western blot analysis of extracts from HeLa and mouse lung, using SLC9A7 Antibody.



#### Western Blotting

**Image 2.** Western blot analysis of extracts from COLO cells using SLC9A7 antibody.



#### Immunofluorescence (fixed cells)

**Image 3.** ABIN6275582 staining HeLa cells by IF/ICC. The sample were fixed with PFA and permeabilized in 0.1% Triton X-100, then blocked in 10% serum for 45 minutes at 25°C. The primary antibody was diluted at 1/200 and incubated with the sample for 1 hour at 37°C. An Alexa Fluor 594 conjugated goat anti-rabbit IgG (H+L) antibody (Cat.# S0006), diluted at 1/600, was used as secondary antibody