

Datasheet for ABIN6258312  
**anti-RFPL1 antibody (Internal Region)**[Go to Product page](#)

## 2 Images

## Overview

Quantity:	100 µL
Target:	RFPL1
Binding Specificity:	Internal Region
Reactivity:	Human
Host:	Rabbit
Clonality:	Polyclonal
Conjugate:	This RFPL1 antibody is un-conjugated
Application:	Western Blotting (WB), ELISA, Immunohistochemistry (IHC)

## Product Details

Immunogen:	A synthesized peptide derived from human RFPL1, corresponding to a region within the internal amino acids.
Isotype:	IgG
Specificity:	RFPL1 Antibody detects endogenous levels of total RFPL1.
Purification:	The antiserum was purified by peptide affinity chromatography using SulfoLink™ Coupling Resin (Thermo Fisher Scientific).

## Target Details

Target:	RFPL1
Alternative Name:	RFPL1 ( <a href="#">RFPL1 Products</a> )

## Target Details

Background:	Gene: RFPL1
Molecular Weight:	?35 kDa
Gene ID:	5988
UniProt:	<a href="#">075677</a>

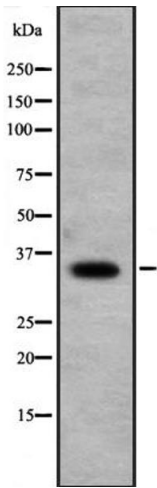
## Application Details

Application Notes:	WB 1:500-1:2000, IHC 1:50-1:200, ELISA(peptide) 1:20000-1:40000
Restrictions:	For Research Use only

## Handling

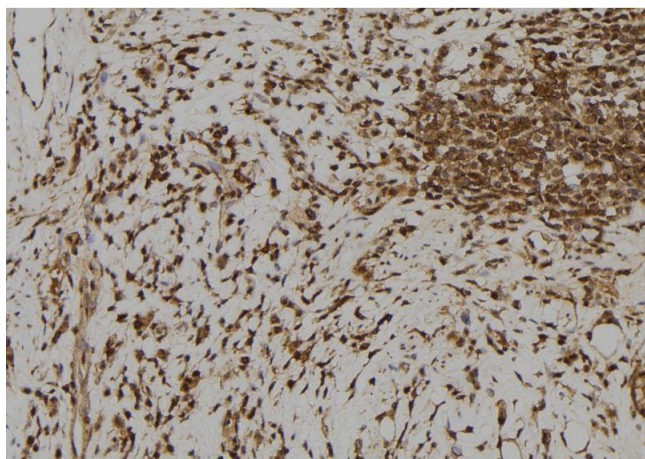
Format:	Liquid
Concentration:	1 mg/mL
Buffer:	Rabbit IgG in phosphate buffered saline, pH 7.4, 150 mM NaCl, 0.02 % sodium azide and 50 % glycerol.
Preservative:	Sodium azide
Precaution of Use:	This product contains Sodium azide: a POISONOUS AND HAZARDOUS SUBSTANCE which should be handled by trained staff only.
Storage:	-20 °C
Expiry Date:	12 months

## Images



### Western Blotting

**Image 1.** Western blot analysis of RFPL1 expression in Jurkat cell lysate, The lane on the left is treated with the antigen-specific peptide.



#### Immunohistochemistry

**Image 2.** ABIN6273385 at 1/100 staining Human gastric tissue by IHC-P. The sample was formaldehyde fixed and a heat mediated antigen retrieval step in citrate buffer was performed. The sample was then blocked and incubated with the antibody for 1.5 hours at 22°C. An HRP conjugated goat anti-rabbit antibody was used as the secondary.