

Datasheet for ABIN6258315  
**anti-RHOH antibody (Internal Region)**[Go to Product page](#)

## 2 Images

## Overview

Quantity:	100 µL
Target:	RHOH
Binding Specificity:	Internal Region
Reactivity:	Human, Mouse, Rat
Host:	Rabbit
Clonality:	Polyclonal
Conjugate:	This RHOH antibody is un-conjugated
Application:	Western Blotting (WB), ELISA, Immunofluorescence (IF), Immunocytochemistry (ICC)

## Product Details

Immunogen:	A synthesized peptide derived from human RhoH, corresponding to a region within the internal amino acids.
Isotype:	IgG
Specificity:	RhoH Antibody detects endogenous levels of total RhoH.
Predicted Reactivity:	Dog
Purification:	The antiserum was purified by peptide affinity chromatography using SulfoLink™ Coupling Resin (Thermo Fisher Scientific).

## Target Details

Target:	RHOH
---------	------

## Target Details

Alternative Name:	RHOH ( <a href="#">RHOH Products</a> )
Background:	<p>Description: Negative regulator of hematopoietic progenitor cell proliferation, survival and migration. Critical regulator of thymocyte development and T-cell antigen receptor (TCR) signaling by mediating recruitment and activation of ZAP70. Required for phosphorylation of CD3Z, membrane translocation of ZAP70 and subsequent activation of the ZAP70-mediated pathways. Essential for efficient beta-selection and positive selection by promoting the ZAP70-dependent phosphorylation of the LAT signalosome during pre-TCR and TCR signaling. Crucial for thymocyte maturation during DN3 to DN4 transition and during positive selection. Plays critical roles in mast cell function by facilitating phosphorylation of SYK in Fc epsilon RI-mediated signal transduction. Essential for the phosphorylation of LAT, LCP2, PLCG1 and PLCG2 and for Ca<sup>2+</sup> mobilization in mast cells (By similarity). Binds GTP but lacks intrinsic GTPase activity and is resistant to Rho-specific GTPase-activating proteins. Inhibits the activation of NF-kappa-B by TNF and IKKB and the activation of CRK/p38 by TNF. Inhibits activities of RAC1, RHOA and CDC42. Negatively regulates leukotriene production in neutrophils.</p> <p>Gene: RHOH</p>
Molecular Weight:	21 kDa
Gene ID:	399
UniProt:	<a href="#">Q15669</a>

## Application Details

Application Notes:	WB 1:500-1:1000, IF/ICC 1:100-1:500, ELISA(peptide) 1:20000-1:40000
Restrictions:	For Research Use only

## Handling

Format:	Liquid
Concentration:	1 mg/mL
Buffer:	Rabbit IgG in phosphate buffered saline , pH 7.4, 150 mM NaCl, 0.02 % sodium azide and 50 % glycerol.
Preservative:	Sodium azide
Precaution of Use:	This product contains Sodium azide: a POISONOUS AND HAZARDOUS SUBSTANCE which should be handled by trained staff only.

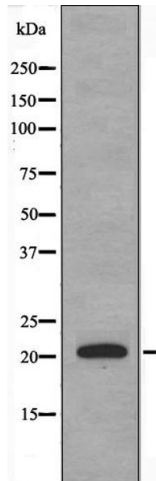
## Handling

Storage: -20 °C

Storage Comment: Store at -20 °C. Stable for 12 months from date of receipt.

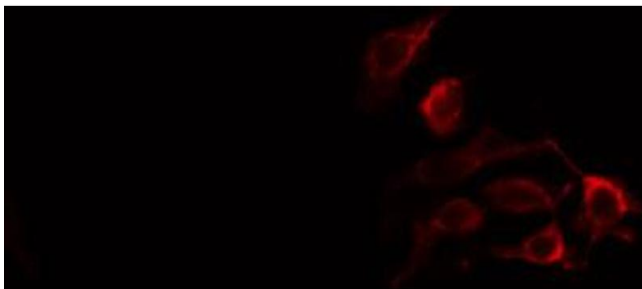
Expiry Date: 12 months

## Images



### Western Blotting

**Image 1.** Western blot analysis of extracts from HT-29 cells, using RhoH antibody.



### Immunofluorescence (fixed cells)

**Image 2.** ABIN6274373 staining HT29 cells by IF/ICC. The sample were fixed with PFA and permeabilized in 0.1% Triton X-100, then blocked in 10% serum for 45 minutes at 25°C. The primary antibody was diluted at 1/200 and incubated with the sample for 1 hour at 37°C. An Alexa Fluor 594 conjugated goat anti-rabbit IgG (H+L) antibody (Cat.# S0006), diluted at 1/600, was used as secondary antibody.