



[Go to Product page](#)

Datasheet for ABIN6258319
anti-IFIT5 antibody (Internal Region)

2 Images

Overview

Quantity:	100 µL
Target:	IFIT5
Binding Specificity:	Internal Region
Reactivity:	Human
Host:	Rabbit
Clonality:	Polyclonal
Conjugate:	This IFIT5 antibody is un-conjugated
Application:	Western Blotting (WB), ELISA, Immunofluorescence (IF), Immunocytochemistry (ICC)

Product Details

Immunogen:	A synthesized peptide derived from human IFIT5, corresponding to a region within the internal amino acids.
Isotype:	IgG
Specificity:	IFIT5 Antibody detects endogenous levels of total IFIT5.
Predicted Reactivity:	Pig,Bovine,Horse,Sheep,Rabbit,Dog
Purification:	The antiserum was purified by peptide affinity chromatography using SulfoLink™ Coupling Resin (Thermo Fisher Scientific).

Target Details

Target:	IFIT5
---------	-------

Target Details

Alternative Name: IFIT5 ([IFIT5 Products](#))

Background: Description: Interferon-induced RNA-binding protein involved in the human innate immune response. Has a broad and adaptable RNA structure recognition important for RNA recognition specificity in antiviral defense. Binds precursor and processed tRNAs as well as poly-U-tailed tRNA fragments (PubMed:25092312, PubMed:23317505, PubMed:23774268). Specifically binds single-stranded RNA bearing a 5'-triphosphate group (PPP-RNA), thereby acting as a sensor of viral single-stranded RNAs. Single-stranded PPP-RNAs, which lack 2'-O-methylation of the 5' cap and bear a 5'-triphosphate group instead, are specific from viruses, providing a molecular signature to distinguish between self and non-self mRNAs by the host during viral infection. Directly binds PPP-RNA in a non-sequence-specific manner (PubMed:23334420). Also recognizes and selectively binds AT-rich dsDNA (PubMed:23774268). Additionally, as a mediator in innate immunity, regulates positively IKK-NFKB signaling by synergizing the recruitment of IKK to MAP3K7 (PubMed:26334375).

Gene: IFIT5

Molecular Weight: 50 kDa

Gene ID: 24138

UniProt: [Q13325](#)

Application Details

Application Notes: WB 1:500-1:1000, IF/ICC 1:100-1:500, ELISA(peptide) 1:20000-1:40000

Restrictions: For Research Use only

Handling

Format: Liquid

Concentration: 1 mg/mL

Buffer: Rabbit IgG in phosphate buffered saline , pH 7.4, 150 mM NaCl, 0.02 % sodium azide and 50 % glycerol.

Preservative: Sodium azide

Precaution of Use: This product contains Sodium azide: a POISONOUS AND HAZARDOUS SUBSTANCE which should be handled by trained staff only.

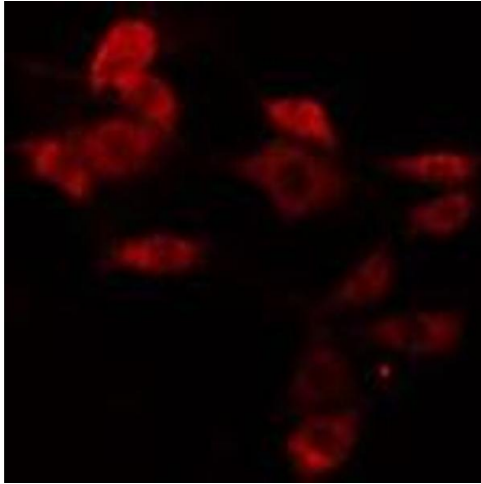
Storage: -20 °C

Handling

Storage Comment: Store at -20 °C. Stable for 12 months from date of receipt.

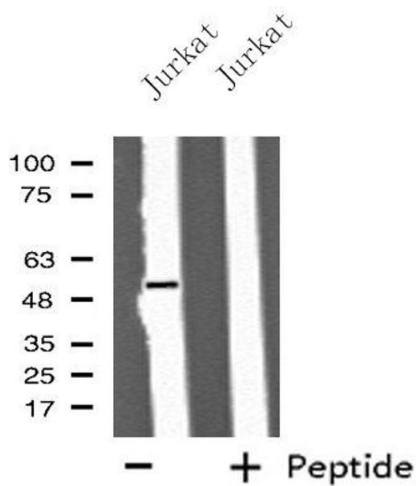
Expiry Date: 12 months

Images



Immunofluorescence (fixed cells)

Image 1. ABIN6275775 staining HeLa cells by IF/ICC. The sample were fixed with PFA and permeabilized in 0.1% Triton X-100, then blocked in 10% serum for 45 minutes at 25°C. The primary antibody was diluted at 1/200 and incubated with the sample for 1 hour at 37°C. An Alexa Fluor 594 conjugated goat anti-rabbit IgG (H+L) antibody (Cat.# S0006), diluted at 1/600, was used as secondary antibody



Western Blotting

Image 2. Western blot analysis of extracts from Jurkat cells, using IFIT5 antibody.