

Datasheet for ABIN6258322  
**anti-SKIL antibody (C-Term)**[Go to Product page](#)

## 3 Images

## Overview

Quantity:	100 µL
Target:	SKIL
Binding Specificity:	C-Term
Reactivity:	Human, Mouse, Rat
Host:	Rabbit
Clonality:	Polyclonal
Conjugate:	This SKIL antibody is un-conjugated
Application:	Western Blotting (WB), ELISA, Immunofluorescence (IF), Immunocytochemistry (ICC)

## Product Details

Immunogen:	A synthesized peptide derived from human SKIL, corresponding to a region within C-terminal amino acids.
Isotype:	IgG
Specificity:	SKIL Antibody detects endogenous levels of total SKIL.
Predicted Reactivity:	Pig,Bovine,Horse,Sheep,Rabbit,Dog,Chicken
Purification:	The antiserum was purified by peptide affinity chromatography using SulfoLink™ Coupling Resin (Thermo Fisher Scientific).

## Target Details

Target:	SKIL
---------	------

## Target Details

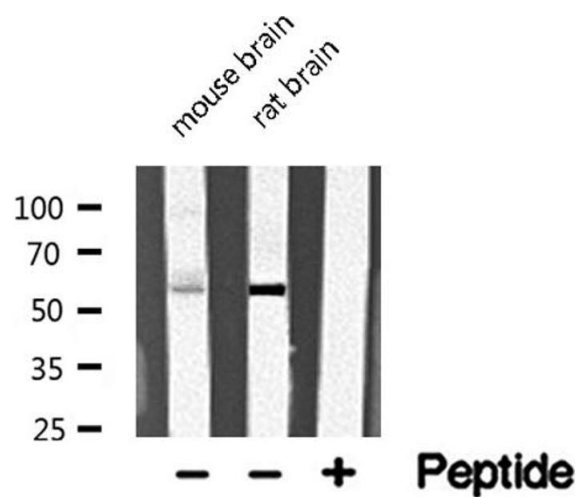
Alternative Name:	SKIL ( <a href="#">SKIL Products</a> )
Background:	Description: May have regulatory role in cell division or differentiation in response to extracellular signals. Gene: SKIL
Molecular Weight:	77 kDa
Gene ID:	6498
UniProt:	<a href="#">P12757</a>
Pathways:	<a href="#">Positive Regulation of Response to DNA Damage Stimulus</a>

## Application Details

Application Notes:	WB 1:500-1:1000, IF/ICC 1:100-1:500, ELISA(peptide) 1:20000-1:40000
Restrictions:	For Research Use only

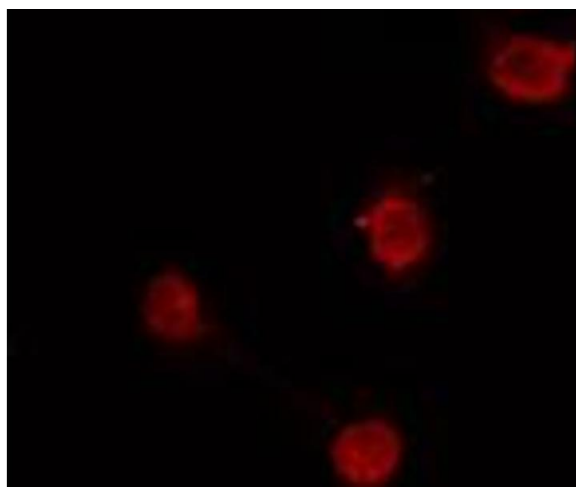
## Handling

Format:	Liquid
Concentration:	1 mg/mL
Buffer:	Rabbit IgG in phosphate buffered saline , pH 7.4, 150 mM NaCl, 0.02 % sodium azide and 50 % glycerol.
Preservative:	Sodium azide
Precaution of Use:	This product contains Sodium azide: a POISONOUS AND HAZARDOUS SUBSTANCE which should be handled by trained staff only.
Storage:	-20 °C
Storage Comment:	Store at -20 °C. Stable for 12 months from date of receipt.
Expiry Date:	12 months



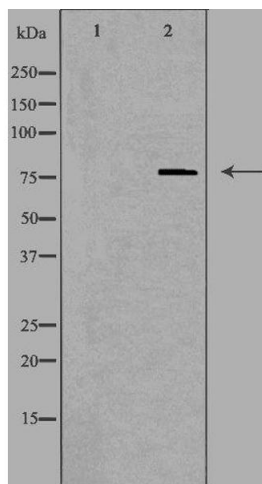
Western Blotting

**Image 1.** Western blot analysis of extracts of various tissue sample,using SKIL Antibody .



Immunofluorescence (fixed cells)

**Image 2.** ABIN6274167 staining HuvEc cells by IF/ICC. The sample were fixed with PFA and permeabilized in 0.1% Triton X-100,then blocked in 10% serum for 45 minutes at 25°C. The primary antibody was diluted at 1/200 and incubated with the sample for 1 hour at 37°C. An Alexa Fluor 594 conjugated goat anti-rabbit IgG (H+L) antibody(Cat.# S0006), diluted at 1/600, was used as secondary antibody.



Western Blotting

**Image 3.** Western blot analysis of extracts from HUVEC, using SKIL antibody.