

Datasheet for ABIN6258328  
**anti-SNAPC3 antibody (C-Term)**[Go to Product page](#)

## 2 Images

## Overview

|                      |  |
|----------------------|--|
| Quantity:            | 100 µL   |
| Target:              | SNAPC3   |
| Binding Specificity: | C-Term   |
| Reactivity:          | Human  |
| Host:                | Rabbit   |
| Clonality:           | Polyclonal   |
| Conjugate:           | This SNAPC3 antibody is un-conjugated                    |
| Application:         | Western Blotting (WB), ELISA, Immunohistochemistry (IHC) |

## Product Details

|                       |   |
|-----------------------|---|
| Immunogen:            | A synthesized peptide derived from human SNAPC3, corresponding to a region within C-terminal amino acids.                 |
| Isotype:              | IgG   |
| Specificity:          | SNAPC3 Antibody detects endogenous levels of total SNAPC3.  |
| Predicted Reactivity: | Bovine,Horse,Sheep,Rabbit,Dog,Chicken,Xenopus   |
| Purification:         | The antiserum was purified by peptide affinity chromatography using SulfoLink™ Coupling Resin (Thermo Fisher Scientific). |

## Target Details

|         |        |
|---------|--------|
| Target: | SNAPC3 |
|---------|--------|

## Target Details

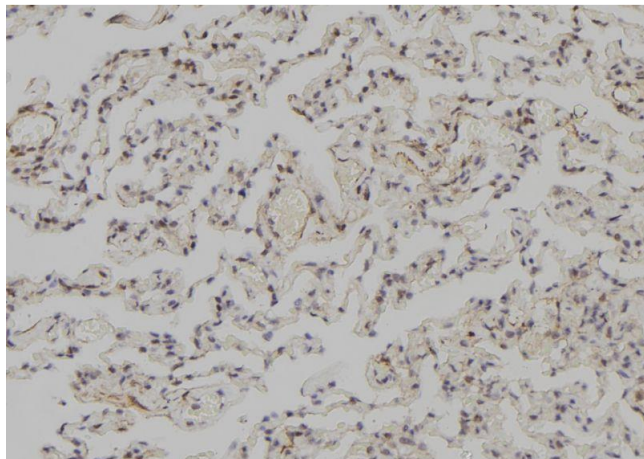
|                   |   |
|-------------------|---|
| Alternative Name: | SNAPC3 ( <a href="#">SNAPC3 Products</a> )  |
| Background:       | <p>Description: Part of the SNAPc complex required for the transcription of both RNA polymerase II and III small-nuclear RNA genes. Binds to the proximal sequence element (PSE), a non-TATA-box basal promoter element common to these 2 types of genes. Recruits TBP and BRF2 to the U6 snRNA TATA box.</p> <p>Gene: SNAPC3</p> |
| Molecular Weight: | 38 kDa  |
| Gene ID:          | 6619  |
| UniProt:          | <a href="#">Q92966</a>  |

## Application Details

|                    |   |
|--------------------|---|
| Application Notes: | WB 1:500-1:2000, IHC 1:50-1:200, ELISA(peptide) 1:20000-1:40000 |
| Restrictions:      | For Research Use only   |

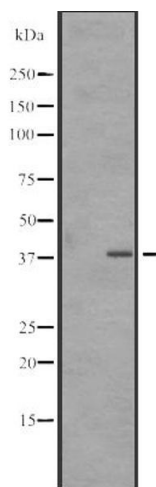
## Handling

|                    |  |
|--------------------|--|
| Format:            | Liquid   |
| Concentration:     | 1 mg/mL  |
| Buffer:            | Rabbit IgG in phosphate buffered saline, pH 7.4, 150 mM NaCl, 0.02 % sodium azide and 50 % glycerol.                   |
| Preservative:      | Sodium azide   |
| Precaution of Use: | This product contains Sodium azide: a POISONOUS AND HAZARDOUS SUBSTANCE which should be handled by trained staff only. |
| Storage:           | -20 °C   |
| Expiry Date:       | 12 months  |



#### Immunohistochemistry

**Image 1.** ABIN6273570 at 1/100 staining Human lung tissue by IHC-P. The sample was formaldehyde fixed and a heat mediated antigen retrieval step in citrate buffer was performed. The sample was then blocked and incubated with the antibody for 1.5 hours at 22°C. An HRP conjugated goat anti-rabbit antibody was used as the secondary.



#### Western Blotting

**Image 2.** Western blot analysis of SNAPC3 expression in A431 whole cell lysate. The lane on the left is treated with the antigen-specific peptide.