

Datasheet for ABIN625833

anti-ZEB2 antibody (AA 545-558)[Go to Product page](#)**1** Image

Overview

Quantity:	100 µg
Target:	ZEB2
Binding Specificity:	AA 545-558
Reactivity:	Human
Host:	Goat
Clonality:	Polyclonal
Conjugate:	This ZEB2 antibody is un-conjugated
Application:	Western Blotting (WB), Immunohistochemistry (IHC), ELISA

Product Details

Purpose:	ZEB2 (aa545-558)
Immunogen:	CTDSRRQISNIKKEK
Sequence:	TDSRRQISNI KKEK
Isotype:	IgG
Specificity:	This antibody is expected to recognize both reported isoforms (NP_055610.1, NP_001165124.1).
Cross-Reactivity:	Dog, Human, Mouse, Rat
Purification:	Purified from goat serum by ammonium sulphate precipitation followed by antigen affinity chromatography using the immunizing peptide.
Grade:	Verified

Target Details

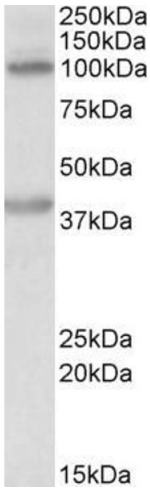
Target:	ZEB2
Alternative Name:	ZEB2 (ZEB2 Products)
Background:	ZEB2, zinc finger E-box binding homeobox 2, FLJ42816, KIAA0569, SIP-1, SIP1, SMADIP1, ZFH1B, OTTHUMP00000204540, OTTHUMP00000204541, Smad-interacting protein 1, zinc finger E-box-binding homeobox 2, zinc finger homeobox 1b, zinc finger homeobox protein 1
Gene ID:	9839, 24136, 311071
NCBI Accession:	NP_055610 , NP_001165124
Pathways:	Tube Formation

Application Details

Application Notes:	Immunohistochemistry: Paraffin embedded Human Kidney. Recommended concentration: 5 µg/mL. Western Blot: Approx 100+38 kDa bands observed in Human Liver lysates (calculated MW of 136 kDa according to NP_055610.1). Recommended concentration: 0.2-0.5 µg/mL. Primary incubation was 1 hour. We believe the two observed bands represent two breakdown fra Peptide ELISA: antibody detection limit dilution 1:32000.
Restrictions:	For Research Use only

Handling

Format:	Liquid
Concentration:	0.5 mg/mL
Buffer:	Supplied at 0.5 mg/mL in Tris saline, 0.02 % sodium azide, pH 7.3 with 0.5 % bovine serum albumin.
Preservative:	Sodium azide
Precaution of Use:	This product contains Sodium azide: a POISONOUS AND HAZARDOUS SUBSTANCE which should be handled by trained staff only.
Handling Advice:	Minimize freezing and thawing.
Storage:	-20 °C
Storage Comment:	Aliquot and store at -20°C, with minimal freeze/thawing. A working aliquot may be refrigerated at 4°C for a few weeks and still remain viable.



Western Blotting

Image 1. ABIN625833 (0.2µg/ml) staining of Human Liver lysate (35µg protein in RIPA buffer). Detected by chemiluminescence.