

Datasheet for ABIN625835
anti-Plakophilin 2 antibody (AA 125-139)[Go to Product page](#)

2 Images

Overview

Quantity:	100 µg
Target:	Plakophilin 2 (PKP2)
Binding Specificity:	AA 125-139
Reactivity:	Human, Mouse
Host:	Goat
Clonality:	Polyclonal
Conjugate:	This Plakophilin 2 antibody is un-conjugated
Application:	Western Blotting (WB), ELISA, Immunohistochemistry (IHC)

Product Details

Purpose:	Plakophilin 2 (aa125-139)
Immunogen:	CRGTAQYSSQKSVEER
Sequence:	RGTAQYSSQK SVEER
Isotype:	IgG
Specificity:	This antibody is expected to recognize both reported isoforms (NP_001005242.2, NP_004563.2).
Cross-Reactivity:	Cow, Dog, Human, Mouse, Rat
Purification:	Purified from goat serum by ammonium sulphate precipitation followed by antigen affinity chromatography using the immunizing peptide.
Grade:	Verified

Target Details

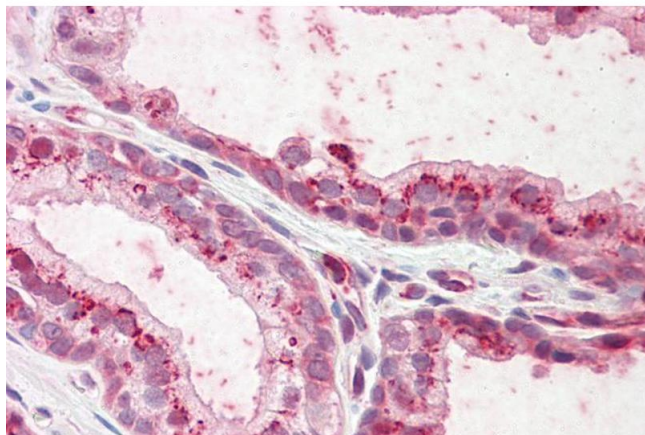
Target:	Plakophilin 2 (PKP2)
Alternative Name:	PKP2 (PKP2 Products)
Background:	PKP2, plakophilin 2, ARVD9, MGC177501, plakophilin-2
Gene ID:	5318, 67451, 287925
NCBI Accession:	NP_001005242 , NP_004563
Pathways:	Cell-Cell Junction Organization , SARS-CoV-2 Protein Interactome , The Global Phosphorylation Landscape of SARS-CoV-2 Infection

Application Details

Application Notes:	Immunohistochemistry: Paraffin embedded Human Prostate. Recommended concentration: 3.75 µg/mL. Western Blot: Approx 100 kDa band observed in Mouse Heart lysates (calculated MW of 88.1 kDa according to Mouse NP_080439.1 and 87.8 kDa according to Rat NP_001093969.1). Recommended concentration: 0.3-1 µg/mL. Primary incubation was 1 hour. Peptide ELISA: antibody detection limit dilution 1:16000.
Restrictions:	For Research Use only

Handling

Format:	Liquid
Concentration:	0.5 mg/mL
Buffer:	Supplied at 0.5 mg/mL in Tris saline, 0.02 % sodium azide, pH 7.3 with 0.5 % bovine serum albumin.
Preservative:	Sodium azide
Precaution of Use:	This product contains Sodium azide: a POISONOUS AND HAZARDOUS SUBSTANCE which should be handled by trained staff only.
Handling Advice:	Minimize freezing and thawing.
Storage:	-20 °C
Storage Comment:	Aliquot and store at -20°C, with minimal freeze/thawing. A working aliquot may be refrigerated at 4°C for a few weeks and still remain viable.



Immunohistochemistry

Image 1. ABIN625835 (3.75µg/ml) staining of paraffin embedded Human Prostate. Steamed antigen retrieval with citrate buffer pH 6, AP-staining.



Western Blotting

Image 2. ABIN625835 (0.3µg/ml) staining of Mouse Heart lysate (35µg protein in RIPA buffer). Detected by chemiluminescence.