

Datasheet for ABIN6258365
anti-ZNF638 antibody (Internal Region)[Go to Product page](#)

3 Images

Overview

Quantity:	100 µL
Target:	ZNF638
Binding Specificity:	Internal Region
Reactivity:	Human
Host:	Rabbit
Clonality:	Polyclonal
Conjugate:	This ZNF638 antibody is un-conjugated
Application:	Western Blotting (WB), Immunohistochemistry (IHC), ELISA, Immunofluorescence (IF), Immunocytochemistry (ICC)

Product Details

Immunogen:	A synthesized peptide derived from human ZNF638, corresponding to a region within the internal amino acids.
Isotype:	IgG
Specificity:	ZNF638 Antibody detects endogenous levels of total ZNF638.
Predicted Reactivity:	Pig,Dog
Purification:	The antiserum was purified by peptide affinity chromatography using SulfoLink™ Coupling Resin (Thermo Fisher Scientific).

Target Details

Target:	ZNF638
---------	--------

Target Details

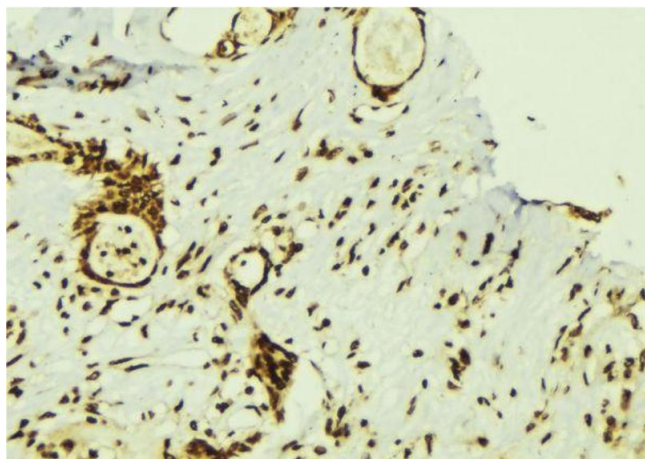
Alternative Name:	ZNF638 (ZNF638 Products)
Background:	<p>Description: Early regulator of adipogenesis that works as a transcription cofactor of CEBPs, controlling the expression of PPARG and probably of other proadipogenic genes, such as SREBF1 (By similarity). Binds to cytidine clusters in double-stranded DNA (PubMed:8647861). May also regulate alternative splicing of target genes during adipogenesis (By similarity).</p> <p>Gene: ZNF638</p>
Molecular Weight:	220 kDa
Gene ID:	27332
UniProt:	Q14966

Application Details

Application Notes:	WB 1:500-1:1000, IHC: 1:50-1:200, IF/ICC 1:100-1:500, ELISA(peptide) 1:20000-1:40000
Restrictions:	For Research Use only

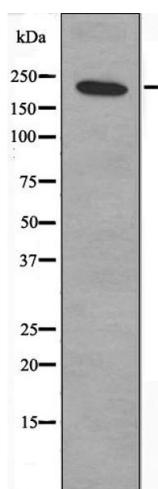
Handling

Format:	Liquid
Concentration:	1 mg/mL
Buffer:	Rabbit IgG in phosphate buffered saline , pH 7.4, 150 mM NaCl, 0.02 % sodium azide and 50 % glycerol.
Preservative:	Sodium azide
Precaution of Use:	This product contains Sodium azide: a POISONOUS AND HAZARDOUS SUBSTANCE which should be handled by trained staff only.
Storage:	-20 °C
Storage Comment:	Store at -20 °C. Stable for 12 months from date of receipt.
Expiry Date:	12 months



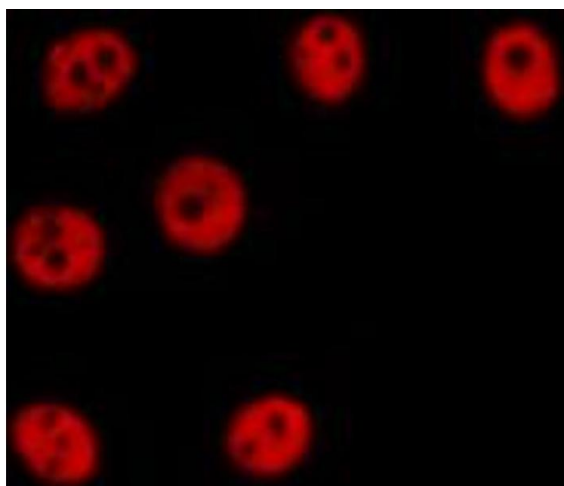
Immunohistochemistry

Image 1. ABIN6274357 at 1/100 staining Human breast cancer tissue by IHC-P. The sample was formaldehyde fixed and a heat mediated antigen retrieval step in citrate buffer was performed. The sample was then blocked and incubated with the antibody for 1.5 hours at 22°C. An HRP conjugated goat anti-rabbit antibody was used as the secondary.



Western Blotting

Image 2. Western blot analysis of extracts from HepG2 cells, treated with serum (20%, 15mins), using ZNF638 antibody.



Immunofluorescence (fixed cells)

Image 3. ABIN6274357 staining HepG2 cells by IF/ICC. The sample were fixed with PFA and permeabilized in 0.1% Triton X-100, then blocked in 10% serum for 45 minutes at 25°C. The primary antibody was diluted at 1/200 and incubated with the sample for 1 hour at 37°C. An Alexa Fluor 594 conjugated goat anti-rabbit IgG (H+L) antibody (Cat.# S0006), diluted at 1/600, was used as secondary antibody.