



[Go to Product page](#)

Datasheet for ABIN6258385
anti-CDC42EP5 antibody (N-Term)

2 Images

Overview

Quantity:	100 µL
Target:	CDC42EP5
Binding Specificity:	N-Term
Reactivity:	Human, Mouse
Host:	Rabbit
Clonality:	Polyclonal
Conjugate:	This CDC42EP5 antibody is un-conjugated
Application:	Western Blotting (WB), ELISA, Immunocytochemistry (ICC), Immunofluorescence (IF)

Product Details

Immunogen:	A synthesized peptide derived from human BORG3, corresponding to a region within N-terminal amino acids.
Isotype:	IgG
Specificity:	BORG3 Antibody detects endogenous levels of total BORG3.
Predicted Reactivity:	Pig,Bovine,Dog
Purification:	The antiserum was purified by peptide affinity chromatography using SulfoLink™ Coupling Resin (Thermo Fisher Scientific).

Target Details

Target:	CDC42EP5
---------	----------

Target Details

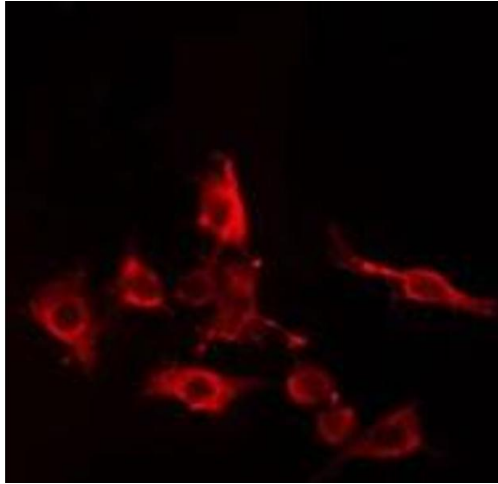
Alternative Name:	CDC42EP5 (CDC42EP5 Products)
Background:	Description: Probably involved in the organization of the actin cytoskeleton. May act downstream of CDC42 to induce actin filament assembly leading to cell shape changes. Induces pseudopodia formation in fibroblasts. Inhibits MAPK8 independently of CDC42 binding. Controls septin organization and this effect is negatively regulated by CDC42 (By similarity). Gene: CDC42EP5
Molecular Weight:	22 kDa
Gene ID:	148170
UniProt:	Q6NZY7
Pathways:	Regulation of Actin Filament Polymerization

Application Details

Application Notes:	WB 1:500-1:1000, IF/ICC 1:100-1:500, ELISA(peptide) 1:20000-1:40000
Restrictions:	For Research Use only

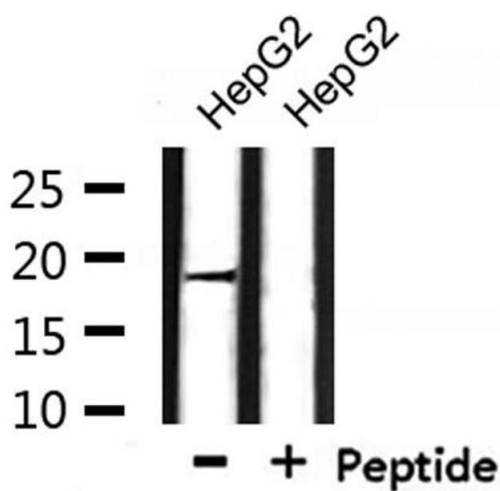
Handling

Format:	Liquid
Concentration:	1 mg/mL
Buffer:	Rabbit IgG in phosphate buffered saline , pH 7.4, 150 mM NaCl, 0.02 % sodium azide and 50 % glycerol.
Preservative:	Sodium azide
Precaution of Use:	This product contains Sodium azide: a POISONOUS AND HAZARDOUS SUBSTANCE which should be handled by trained staff only.
Storage:	-20 °C
Storage Comment:	Store at -20 °C. Stable for 12 months from date of receipt.
Expiry Date:	12 months



Immunofluorescence (fixed cells)

Image 1. ABIN6274982 staining HeLa cells by IF/ICC. The sample were fixed with PFA and permeabilized in 0.1% Triton X-100, then blocked in 10% serum for 45 minutes at 25°C. The primary antibody was diluted at 1/200 and incubated with the sample for 1 hour at 37°C. An Alexa Fluor 594 conjugated goat anti-rabbit IgG (H+L) antibody (Cat.# S0006), diluted at 1/600, was used as secondary antibody



Western Blotting

Image 2. Western blot analysis of extracts from HepG2, using BORG3 Antibody.