

Datasheet for ABIN6258392

anti-CYP4B1 antibody (Internal Region)

3 Images

[Go to Product page](#)

Overview

Quantity:	100 µL
Target:	CYP4B1
Binding Specificity:	Internal Region
Reactivity:	Human, Mouse
Host:	Rabbit
Clonality:	Polyclonal
Conjugate:	This CYP4B1 antibody is un-conjugated
Application:	Western Blotting (WB), Immunohistochemistry (IHC), ELISA, Immunofluorescence (IF), Immunocytochemistry (ICC)

Product Details

Immunogen:	A synthesized peptide derived from human Cytochrome P450 4B1, corresponding to a region within the internal amino acids.
Isotype:	IgG
Specificity:	Cytochrome P450 4B1 Antibody detects endogenous levels of total Cytochrome P450 4B1.
Purification:	The antiserum was purified by peptide affinity chromatography using SulfoLink™ Coupling Resin (Thermo Fisher Scientific).

Target Details

Target:	CYP4B1
Alternative Name:	CYP4B1 (CYP4B1 Products)

Target Details

Background:	Description: Cytochromes P450 are a group of heme-thiolate monooxygenases. In liver microsomes, this enzyme is involved in an NADPH-dependent electron transport pathway. It oxidizes a variety of structurally unrelated compounds, including steroids, fatty acids, and xenobiotics. Gene: CYP4B1
-------------	--

Molecular Weight:	50 kDa
-------------------	--------

Gene ID:	1580
----------	------

UniProt:	P13584
----------	------------------------

Application Details

Application Notes:	WB 1:500-1:1000, IHC: 1:50-1:200, IF/ICC 1:100-1:500, ELISA(peptide) 1:20000-1:40000
--------------------	--

Restrictions:	For Research Use only
---------------	-----------------------

Handling

Format:	Liquid
---------	--------

Concentration:	1 mg/mL
----------------	---------

Buffer:	Rabbit IgG in phosphate buffered saline , pH 7.4, 150 mM NaCl, 0.02 % sodium azide and 50 % glycerol.
---------	---

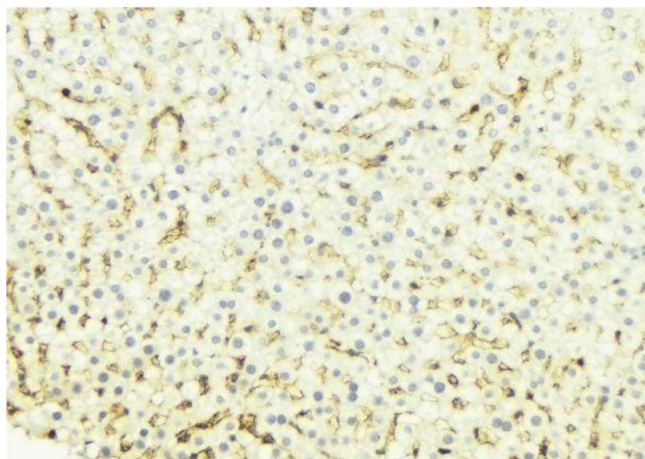
Preservative:	Sodium azide
---------------	--------------

Precaution of Use:	This product contains Sodium azide: a POISONOUS AND HAZARDOUS SUBSTANCE which should be handled by trained staff only.
--------------------	--

Storage:	-20 °C
----------	--------

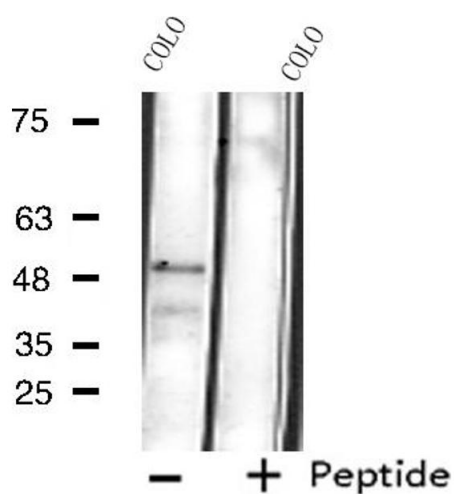
Storage Comment:	Store at -20 °C. Stable for 12 months from date of receipt.
------------------	---

Expiry Date:	12 months
--------------	-----------



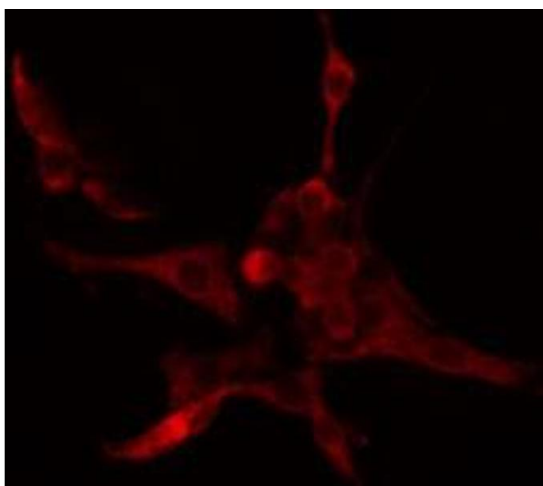
Immunohistochemistry

Image 1. ABIN6274659 at 1/100 staining Mouse liver tissue by IHC-P. The sample was formaldehyde fixed and a heat mediated antigen retrieval step in citrate buffer was performed. The sample was then blocked and incubated with the antibody for 1.5 hours at 22°C. An HRP conjugated goat anti-rabbit antibody was used as the secondary.



Western Blotting

Image 2. Western blot analysis of extracts from COLO cells, using Cytochrome P450 4B1 antibody.



Immunofluorescence (fixed cells)

Image 3. ABIN6274659 staining COLO205 cells by IF/ICC. The sample were fixed with PFA and permeabilized in 0.1% Triton X-100, then blocked in 10% serum for 45 minutes at 25°C. The primary antibody was diluted at 1/200 and incubated with the sample for 1 hour at 37°C. An Alexa Fluor 594 conjugated goat anti-rabbit IgG (H+L) antibody (Cat.# S0006), diluted at 1/600, was used as secondary antibody.