

Datasheet for ABIN6258404
anti-NHE8 antibody (C-Term)

3 Images

[Go to Product page](#)

Overview

Quantity:	100 µL
Target:	NHE8 (SLC9A8)
Binding Specificity:	C-Term
Reactivity:	Human, Mouse, Rat
Host:	Rabbit
Clonality:	Polyclonal
Conjugate:	This NHE8 antibody is un-conjugated
Application:	Western Blotting (WB), ELISA, Immunofluorescence (IF), Immunocytochemistry (ICC)

Product Details

Immunogen:	A synthesized peptide derived from human SLC9A8, corresponding to a region within C-terminal amino acids.
Isotype:	IgG
Specificity:	SLC9A8 Antibody detects endogenous levels of total SLC9A8.
Predicted Reactivity:	Pig,Horse,Dog,Chicken
Purification:	The antiserum was purified by peptide affinity chromatography using SulfoLink™ Coupling Resin (Thermo Fisher Scientific).

Target Details

Target:	NHE8 (SLC9A8)
---------	---------------

Target Details

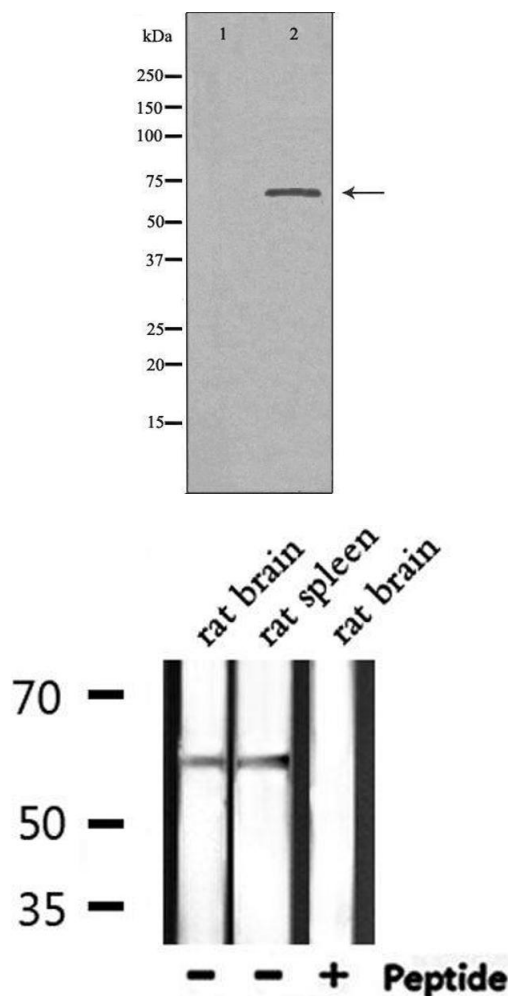
Alternative Name:	SLC9A8 (SLC9A8 Products)
Background:	Description: Involved in pH regulation to eliminate acids generated by active metabolism or to counter adverse environmental conditions. Major proton extruding system driven by the inward sodium ion chemical gradient. Plays an important role in signal transduction. Gene: SLC9A8
Molecular Weight:	65 kDa
Gene ID:	23315
UniProt:	Q9Y2E8
Pathways:	Proton Transport

Application Details

Application Notes:	WB 1:500-1:1000, IF/ICC 1:100-1:500, ELISA(peptide) 1:20000-1:40000
Restrictions:	For Research Use only

Handling

Format:	Liquid
Concentration:	1 mg/mL
Buffer:	Rabbit IgG in phosphate buffered saline , pH 7.4, 150 mM NaCl, 0.02 % sodium azide and 50 % glycerol.
Preservative:	Sodium azide
Precaution of Use:	This product contains Sodium azide: a POISONOUS AND HAZARDOUS SUBSTANCE which should be handled by trained staff only.
Storage:	-20 °C
Storage Comment:	Store at -20 °C. Stable for 12 months from date of receipt.
Expiry Date:	12 months

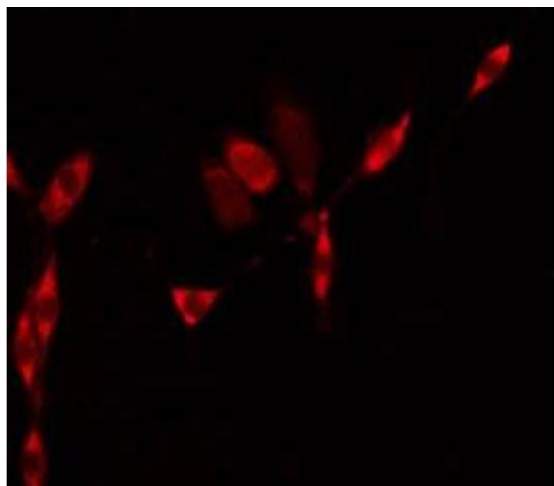


Western Blotting

Image 1. Western blot analysis of extracts from Jurkat cells, using SLC9A8 antibody. The lane on the left is treated with the antigen-specific peptide.

Western Blotting

Image 2. Western blot analysis of extracts from rat brain, rat spleen, using SLC9A8 Antibody.



Immunofluorescence (fixed cells)

Image 3. ABIN6275583 staining HeLa by IF/ICC. The sample were fixed with PFA and permeabilized in 0.1% Triton X-100, then blocked in 10% serum for 45 minutes at 25°C. The primary antibody was diluted at 1/200 and incubated with the sample for 1 hour at 37°C. An Alexa Fluor 594 conjugated goat anti-rabbit IgG (H+L) Ab, diluted at 1/600, was used as the secondary antibody.