

Datasheet for ABIN6258438  
**anti-COL1A2 antibody (N-Term)**

## 5 Images

[Go to Product page](#)

## Overview

Quantity:	100 µL
Target:	COL1A2
Binding Specificity:	N-Term
Reactivity:	Human, Mouse
Host:	Rabbit
Clonality:	Polyclonal
Conjugate:	This COL1A2 antibody is un-conjugated
Application:	Western Blotting (WB), Immunohistochemistry (IHC), ELISA, Immunofluorescence (IF), Immunocytochemistry (ICC)

## Product Details

Immunogen:	A synthesized peptide derived from human Collagen I alpha 2, corresponding to a region within N-terminal amino acids.
Isotype:	IgG
Specificity:	Collagen I alpha 2 Antibody detects endogenous levels of total Collagen I alpha 2.
Predicted Reactivity:	Pig,Bovine,Horse,Dog
Purification:	The antiserum was purified by peptide affinity chromatography using SulfoLink™ Coupling Resin (Thermo Fisher Scientific).

## Target Details

Target:	COL1A2
---------	--------

## Target Details

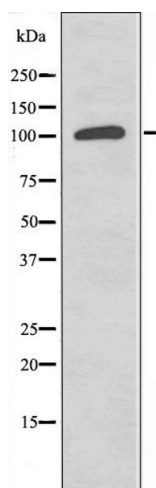
Alternative Name:	COL1A2 ( <a href="#">COL1A2 Products</a> )
Background:	Description: Type I collagen is a member of group I collagen (fibrillar forming collagen). Gene: COL1A2
Molecular Weight:	125 kDa
Gene ID:	1278
UniProt:	<a href="#">P08123</a>

## Application Details

Application Notes:	WB 1:500-1:1000, IHC: 1:50-1:200, IF/ICC 1:100-1:500, ELISA(peptide) 1:20000-1:40000
Restrictions:	For Research Use only

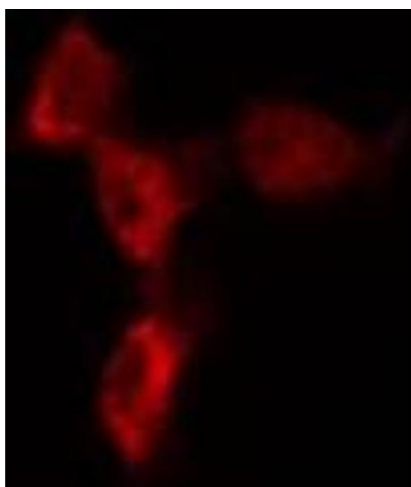
## Handling

Format:	Liquid
Concentration:	1 mg/mL
Buffer:	Rabbit IgG in phosphate buffered saline , pH 7.4, 150 mM NaCl, 0.02 % sodium azide and 50 % glycerol.
Preservative:	Sodium azide
Precaution of Use:	This product contains Sodium azide: a POISONOUS AND HAZARDOUS SUBSTANCE which should be handled by trained staff only.
Storage:	-20 °C
Storage Comment:	Store at -20 °C. Stable for 12 months from date of receipt.
Expiry Date:	12 months



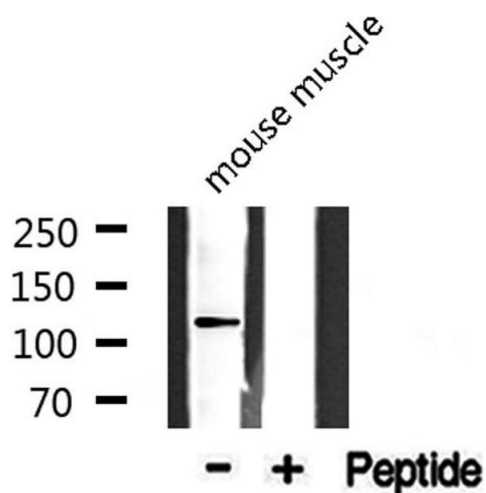
#### Western Blotting

**Image 1.** Western blot analysis of extracts from 293 cells, using Collagen I  $\alpha 2$  antibody.



#### Immunofluorescence (fixed cells)

**Image 2.** ABIN6274621 staining 293T by IF/ICC. The sample were fixed with PFA and permeabilized in 0.1% Triton X-100, then blocked in 10% serum for 45 minutes at 25°C. The primary antibody was diluted at 1/200 and incubated with the sample for 1 hour at 37°C. An Alexa Fluor 594 conjugated goat anti-rabbit IgG (H+L) Ab, diluted at 1/600, was used as the secondary antibody.



#### Western Blotting

**Image 3.** Western blot analysis of extracts from mouse muscle, using Collagen I  $\alpha 2$  antibody.

Please check the [product details page](#) for more images. Overall 5 images are available for ABIN6258438.