



[Go to Product page](#)

Datasheet for ABIN6258442

## anti-Chp2 antibody (Internal Region)

### 1 Image

#### Overview

Quantity:	100 µL
Target:	Chp2
Binding Specificity:	Internal Region
Reactivity:	Human, Mouse, Rat
Host:	Rabbit
Clonality:	Polyclonal
Conjugate:	This Chp2 antibody is un-conjugated
Application:	Western Blotting (WB), ELISA, Immunofluorescence (IF), Immunohistochemistry (IHC), Immunocytochemistry (ICC)

#### Product Details

Immunogen:	A synthesized peptide derived from human CHP2, corresponding to a region within the internal amino acids.
Isotype:	IgG
Specificity:	CHP2 Antibody detects endogenous levels of total CHP2.
Predicted Reactivity:	Pig,Zebrafish,Bovine,Horse,Sheep,Rabbit
Purification:	The antiserum was purified by peptide affinity chromatography using SulfoLink™ Coupling Resin (Thermo Fisher Scientific).

#### Target Details

Target:	Chp2
---------	------

## Target Details

---

Abstract: [Chp2 Products](#)

---

Background: Description: Functions as an integral cofactor in cell pH regulation by controlling plasma membrane-type Na<sup>+</sup>/H<sup>+</sup> exchange activity. Binds to and activates SLC9A1/NHE1 in a serum-independent manner, thus increasing pH and protecting cells from serum deprivation-induced death. Also plays a role in the regulation of cell proliferation and tumor growth by increasing the phosphatase activity of PPP3CA in a calcium-dependent manner. Activator of the calcineurin/NFAT signaling pathway. Involved in the cytoplasmic translocation of the transcription factor NFATC3 to the nucleus.

Gene: CHP2

---

Molecular Weight: 22 kDa

---

Gene ID: 63928

---

UniProt: [043745](#)

---

## Application Details

---

Application Notes: WB 1:500-1:1000, IF/ICC 1:100-1:500, IHC 1:50-1:200, ELISA(peptide) 1:20000-1:40000

---

Restrictions: For Research Use only

---

## Handling

---

Format: Liquid

---

Concentration: 1 mg/mL

---

Buffer: Rabbit IgG in phosphate buffered saline , pH 7.4, 150 mM NaCl, 0.02 % sodium azide and 50 % glycerol.

---

Preservative: Sodium azide

---

Precaution of Use: This product contains Sodium azide: a POISONOUS AND HAZARDOUS SUBSTANCE which should be handled by trained staff only.

---

Storage: -20 °C

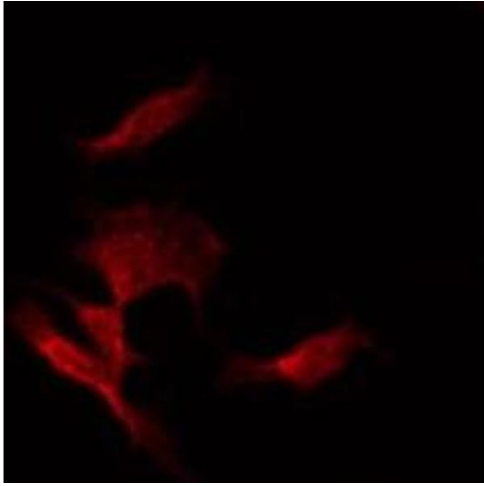
---

Storage Comment: Store at -20 °C. Stable for 12 months from date of receipt.

---

Expiry Date: 12 months

---



#### Immunofluorescence (fixed cells)

**Image 1.** ABIN6274931 staining HT29 by IF/ICC. The sample were fixed with PFA and permeabilized in 0.1% Triton X-100, then blocked in 10% serum for 45 minutes at 25°C. The primary antibody was diluted at 1/200 and incubated with the sample for 1 hour at 37°C. An Alexa Fluor 594 conjugated goat anti-rabbit IgG (H+L) Ab, diluted at 1/600, was used as the secondary antibody