



[Go to Product page](#)

Datasheet for ABIN6258453

## anti-CDC42EP3 antibody (Internal Region)

### 3 Images

#### Overview

Quantity:	100 µL
Target:	CDC42EP3
Binding Specificity:	Internal Region
Reactivity:	Human, Mouse, Rat
Host:	Rabbit
Clonality:	Polyclonal
Conjugate:	This CDC42EP3 antibody is un-conjugated
Application:	Western Blotting (WB), ELISA, Immunohistochemistry (IHC), Immunocytochemistry (ICC), Immunofluorescence (IF)

#### Product Details

Immunogen:	A synthesized peptide derived from human BORG2, corresponding to a region within the internal amino acids.
Isotype:	IgG
Specificity:	BORG2 Antibody detects endogenous levels of total BORG2.
Predicted Reactivity:	Pig,Zebrafish,Bovine,Horse,Sheep,Rabbit,Dog,Chicken,Xenopus
Purification:	The antiserum was purified by peptide affinity chromatography using SulfoLink™ Coupling Resin (Thermo Fisher Scientific).

#### Target Details

Target:	CDC42EP3
---------	----------

## Target Details

---

Alternative Name: CDC42EP3 ([CDC42EP3 Products](#))

---

Background: Description: Probably involved in the organization of the actin cytoskeleton. May act downstream of CDC42 to induce actin filament assembly leading to cell shape changes.  
Induces pseudopodia formation in fibroblasts.  
Gene: CDC42EP3

---

Molecular Weight: 27 kDa

---

Gene ID: 10602

---

UniProt: [Q9UKI2](#)

---

## Application Details

---

Application Notes: WB 1:500-1:1000, IF/ICC 1:100-1:500, IHC 1:50-1:200, ELISA(peptide) 1:20000-1:40000

---

Restrictions: For Research Use only

---

## Handling

---

Format: Liquid

---

Concentration: 1 mg/mL

---

Buffer: Rabbit IgG in phosphate buffered saline , pH 7.4, 150 mM NaCl, 0.02 % sodium azide and 50 % glycerol.

---

Preservative: Sodium azide

---

Precaution of Use: This product contains Sodium azide: a POISONOUS AND HAZARDOUS SUBSTANCE which should be handled by trained staff only.

---

Storage: -20 °C

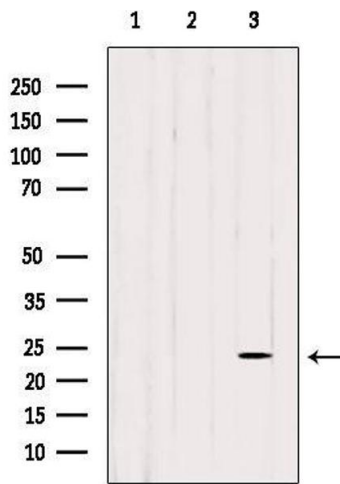
---

Storage Comment: Store at -20 °C. Stable for 12 months from date of receipt.

---

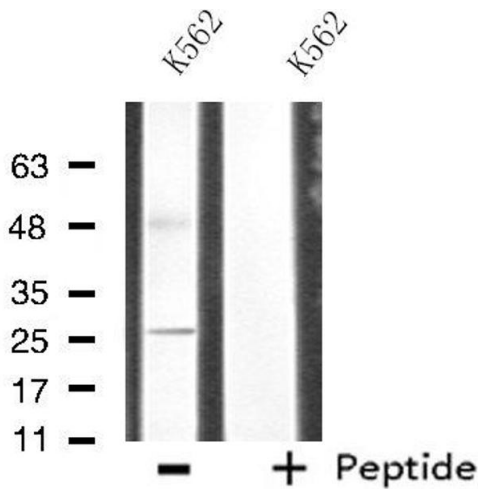
Expiry Date: 12 months

---



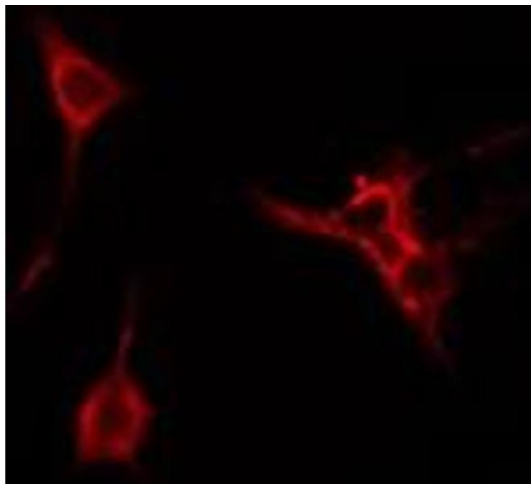
### Western Blotting

**Image 1.** Western blot analysis of extracts from various samples, using BORG2 Antibody. Lane 1: 293 treated with blocking peptide. Lane 2: 293; Lane 3: hela;



### Western Blotting

**Image 2.** Western blot analysis of extracts from K562 cells, using CDC42EP3 antibody.



### Immunofluorescence (fixed cells)

**Image 3.** ABIN6274980 staining HeLa cells by IF/ICC. The sample were fixed with PFA and permeabilized in 0.1% Triton X-100, then blocked in 10% serum for 45 minutes at 25°C. The primary antibody was diluted at 1/200 and incubated with the sample for 1 hour at 37°C. An Alexa Fluor 594 conjugated goat anti-rabbit IgG (H+L) antibody (Cat.# S0006), diluted at 1/600, was used as secondary antibody