



[Go to Product page](#)

Datasheet for ABIN625846

anti-Malectin antibody (Internal Region)

3 Images

Overview

Quantity:	50 µg
Target:	Malectin (MLEC)
Binding Specificity:	Internal Region
Reactivity:	Human, Pig, Rabbit, Cow, Dog, Horse, Monkey, Bat, Hamster
Host:	Rabbit
Clonality:	Polyclonal
Application:	Immunohistochemistry (IHC), Immunohistochemistry (Paraffin-embedded Sections) (IHC (p))

Product Details

Brand:	IHC-plus™
Immunogen:	Synthetic 18 amino acid peptide from internal region of human MLEC. Percent identity with other species by BLAST analysis: Human, Gorilla, Gibbon, Monkey, Marmoset, Bovine, Dog, Bat, Hamster, Elephant, Panda, Horse, Rabbit, Pig, Platypus (100%), Mouse, Rat, Turkey, Chicken (94%), Xenopus, Pufferfish, Zebrafish (89%), Stickleback (83%). Type of Immunogen: Synthetic peptide
Specificity:	Human MLEC. BLAST analysis of the peptide immunogen showed no homology with other human proteins.
Predicted Reactivity:	Percent identity with other species by BLAST analysis: Human, Gorilla, Gibbon, Monkey, Marmoset, Bovine, Dog, Bat, Hamster, Elephant, Panda, Horse, Rabbit, Pig, Platypus (100%) Mouse, Rat, Turkey, Chicken (94%) Xenopus, Pufferfish, Zebrafish (89%) Stickleback (83%).

Product Details

Purification: Immunoaffinity purified

Target Details

Target: Malectin (MLEC)

Alternative Name: KIAA0152 / MLEC ([MLEC Products](#))

Background: Name/Gene ID: MLEC

Synonyms: MLEC, KIAA0152, Malectin

Gene ID: 9761

Application Details

Application Notes: Approved: IHC, IHC-P (5 - 7.5 µg/mL)

Comment: Target Species of Antibody: Human

Restrictions: For Research Use only

Handling

Format: Liquid

Concentration: Lot specific

Buffer: PBS, less than 0.1 % sodium azide.

Preservative: Sodium azide

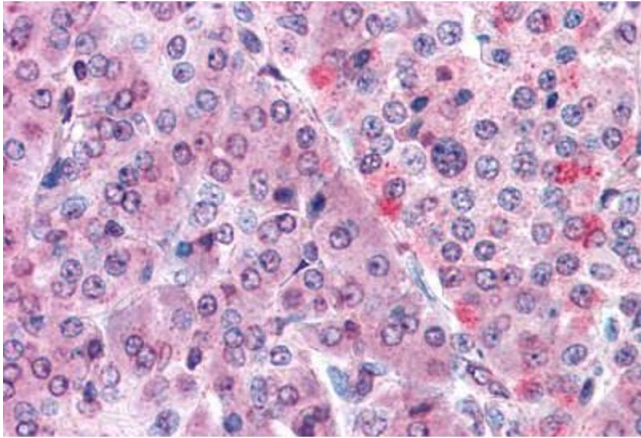
Precaution of Use: This product contains Sodium azide: a POISONOUS AND HAZARDOUS SUBSTANCE which should be handled by trained staff only.

Handling Advice: avoid freeze thaw cycles.

Storage: 4 °C, -20 °C

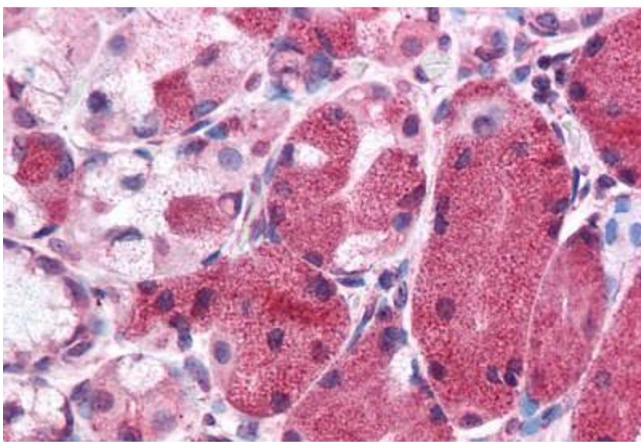
Storage Comment: Aliquot and store undiluted at -20°C or below for up to 1 year. Can be stored undiluted at 4°C for up to 1 month. Avoid freeze-thaw cycles.

Expiry Date: 12 months



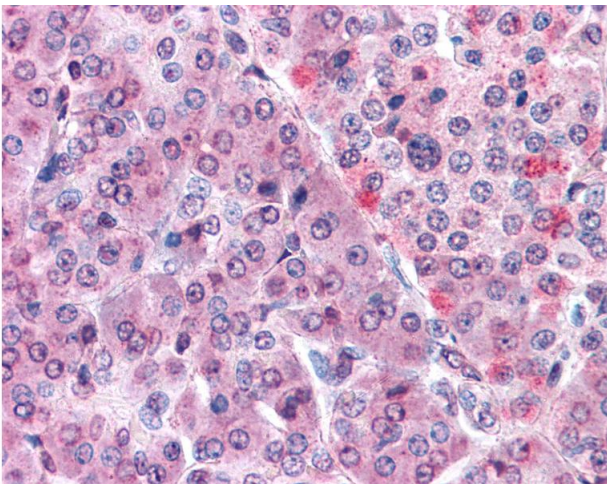
Immunohistochemistry (Formalin-fixed Paraffin-embedded Sections)

Image 1. Human Pancreas: Formalin-Fixed, Paraffin-Embedded (FFPE)



Immunohistochemistry (Formalin-fixed Paraffin-embedded Sections)

Image 2. Human Stomach: Formalin-Fixed, Paraffin-Embedded (FFPE)



Immunohistochemistry

Image 3. Anti-MLEC antibody IHC of human pancreas. Immunohistochemistry of formalin-fixed, paraffin-embedded tissue after heat-induced antigen retrieval.