

Datasheet for ABIN6258463

anti-CDC40 antibody**2** Images[Go to Product page](#)

Overview

Quantity:	100 µL
Target:	CDC40
Reactivity:	Mouse, Rat, Human
Host:	Rabbit
Clonality:	Polyclonal
Conjugate:	This CDC40 antibody is un-conjugated
Application:	Western Blotting (WB), ELISA, Immunocytochemistry (ICC), Immunofluorescence (IF)

Product Details

Immunogen:	A synthesized peptide
Isotype:	IgG
Specificity:	CDC40 Antibody detects endogenous levels of total CDC40
Cross-Reactivity:	Human, Mouse (Murine), Rat (Rattus)
Purification:	The antiserum was purified by peptide affinity chromatography using SulfoLink™ Coupling Resin (Thermo Fisher Scientific).

Target Details

Target:	CDC40
Alternative Name:	CDC40 (CDC40 Products)
Background:	Description: Associates with the spliceosome late in the splicing pathway and may function in

Target Details

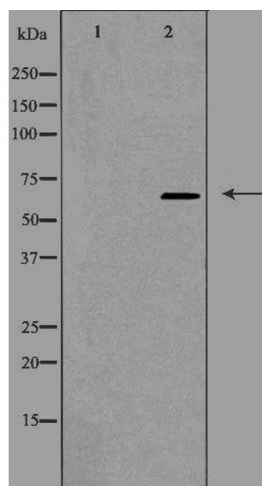
	the second step of pre-mRNA splicing. Gene: CDC40
Molecular Weight:	66 kDa
Gene ID:	51362
UniProt:	O60508
Pathways:	Ribonucleoprotein Complex Subunit Organization

Application Details

Application Notes:	WB 1:500~1:1000, IF/ICC 1:100-1:500
Restrictions:	For Research Use only

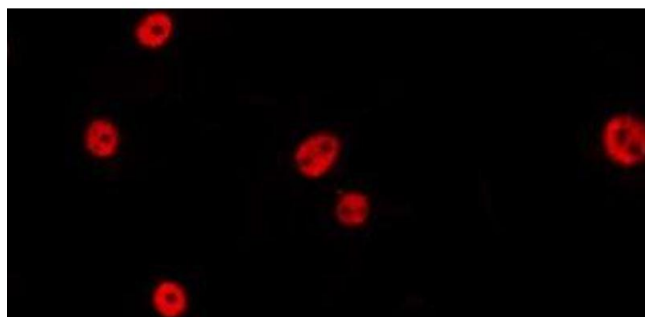
Handling

Format:	Liquid
Concentration:	1 mg/mL
Buffer:	Rabbit IgG in phosphate buffered saline , pH 7.4, 150 mM NaCl, 0.02 % sodium azide and 50 % glycerol.
Preservative:	Sodium azide
Precaution of Use:	This product contains Sodium azide: a POISONOUS AND HAZARDOUS SUBSTANCE which should be handled by trained staff only.
Storage:	-20 °C
Storage Comment:	Store at -20 °C.Stable for 12 months from date of receipt
Expiry Date:	12 months



Western Blotting

Image 1. Western blot analysis of extracts from K562 cells using CDC40 antibody. The lane on the left is treated with the antigen-specific peptide.



Immunofluorescence (fixed cells)

Image 2. ABIN6275391 staining HepG2 by IF/ICC. The sample were fixed with PFA and permeabilized in 0.1% Triton X-100, then blocked in 10% serum for 45 minutes at 25°C. The primary antibody was diluted at 1/200 and incubated with the sample for 1 hour at 37°C. An Alexa Fluor 594 conjugated goat anti-rabbit IgG (H+L) Ab, diluted at 1/600, was used as the secondary antibody.