

Datasheet for ABIN6258474  
**anti-SPIC antibody (Internal Region)**[Go to Product page](#)

## 4 Images

## Overview

Quantity:	100 µL
Target:	SPIC
Binding Specificity:	Internal Region
Reactivity:	Human, Mouse
Host:	Rabbit
Clonality:	Polyclonal
Conjugate:	This SPIC antibody is un-conjugated
Application:	ELISA, Western Blotting (WB), Immunofluorescence (IF), Immunocytochemistry (ICC)

## Product Details

Immunogen:	A synthesized peptide derived from human SPIC, corresponding to a region within the internal amino acids.
Isotype:	IgG
Specificity:	SPIC Antibody detects endogenous levels of total SPIC.
Predicted Reactivity:	Pig,Zebrafish,Bovine,Sheep,Rabbit,Dog,Chicken,Xenopus
Purification:	The antiserum was purified by peptide affinity chromatography using SulfoLink™ Coupling Resin (Thermo Fisher Scientific).

## Target Details

Target:	SPIC
---------	------

## Target Details

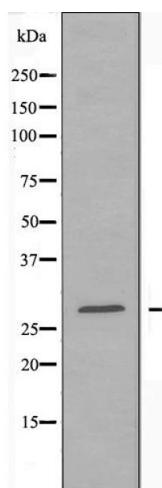
Alternative Name:	SPIC ( <a href="#">SPIC Products</a> )
Background:	<p>Description: Controls the development of red pulp macrophages required for red blood cells recycling and iron homeostasis. Transcription factor that binds to the PU-box, a purine-rich DNA sequence (5'-GAGGA[AT]-3') that can act as a lymphoid-specific enhancer. Regulates VCAM1 gene expression (By similarity).</p> <p>Gene: SPIC</p>
Molecular Weight:	29 kDa
Gene ID:	121599
UniProt:	<a href="#">Q8N5J4</a>

## Application Details

Application Notes:	WB 1:500-1:1000, IF/ICC 1:100-1:500, ELISA(peptide) 1:20000-1:40000
Restrictions:	For Research Use only

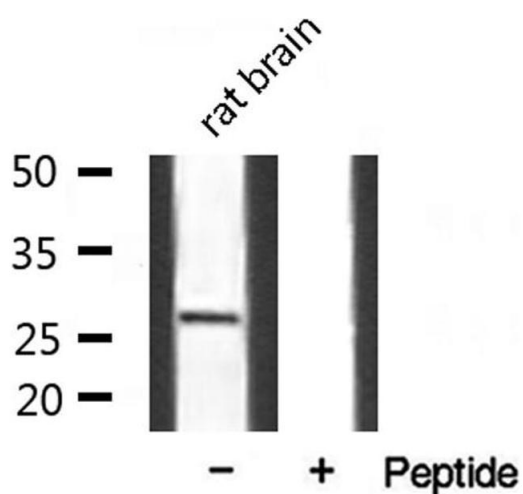
## Handling

Format:	Liquid
Concentration:	1 mg/mL
Buffer:	Rabbit IgG in phosphate buffered saline , pH 7.4, 150 mM NaCl, 0.02 % sodium azide and 50 % glycerol.
Preservative:	Sodium azide
Precaution of Use:	This product contains Sodium azide: a POISONOUS AND HAZARDOUS SUBSTANCE which should be handled by trained staff only.
Storage:	-20 °C
Storage Comment:	Store at -20 °C. Stable for 12 months from date of receipt.
Expiry Date:	12 months



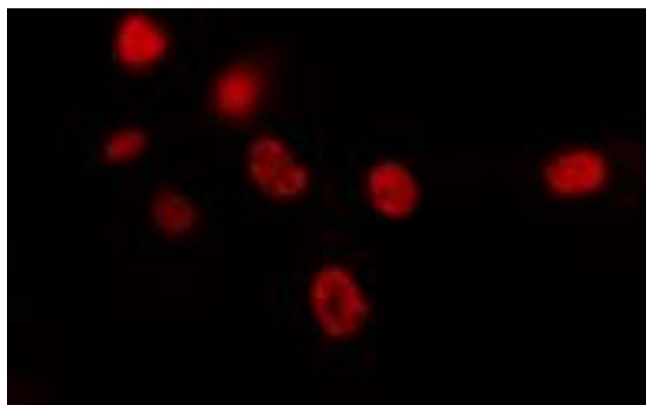
#### Western Blotting

**Image 1.** Western blot analysis of extracts from HepG2 cells, using SPIC antibody.



#### Western Blotting

**Image 2.** Western blot analysis of extracts from mouse Brian, using SPIC antibody.



#### Immunofluorescence (fixed cells)

**Image 3.** ABIN6274426 staining HepG2 cells by IF/ICC. The sample were fixed with PFA and permeabilized in 0.1% Triton X-100, then blocked in 10% serum for 45 minutes at 25°C. The primary antibody was diluted at 1/200 and incubated with the sample for 1 hour at 37°C. An Alexa Fluor 594 conjugated goat anti-rabbit IgG (H+L) antibody (Cat.# S0006), diluted at 1/600, was used as secondary antibody.

Please check the [product details page](#) for more images. Overall 4 images are available for ABIN6258474.