

Datasheet for ABIN6258480 anti-Cyclin M2 antibody (Internal Region)

[Go to Product page](#)

1 Image

Overview

Quantity:	100 µL
Target:	Cyclin M2 (CNNM2)
Binding Specificity:	Internal Region
Reactivity:	Human, Mouse, Rat
Host:	Rabbit
Clonality:	Polyclonal
Conjugate:	This Cyclin M2 antibody is un-conjugated
Application:	Western Blotting (WB), ELISA, Immunofluorescence (IF), Immunocytochemistry (ICC)

Product Details

Immunogen:	A synthesized peptide derived from human CNNM2, corresponding to a region within the internal amino acids.
Isotype:	IgG
Specificity:	CNNM2 Antibody detects endogenous levels of total CNNM2.
Predicted Reactivity:	Pig,Bovine,Sheep,Rabbit,Dog,Chicken
Purification:	The antiserum was purified by peptide affinity chromatography using SulfoLink™ Coupling Resin (Thermo Fisher Scientific).

Target Details

Target:	Cyclin M2 (CNNM2)
---------	-------------------

Target Details

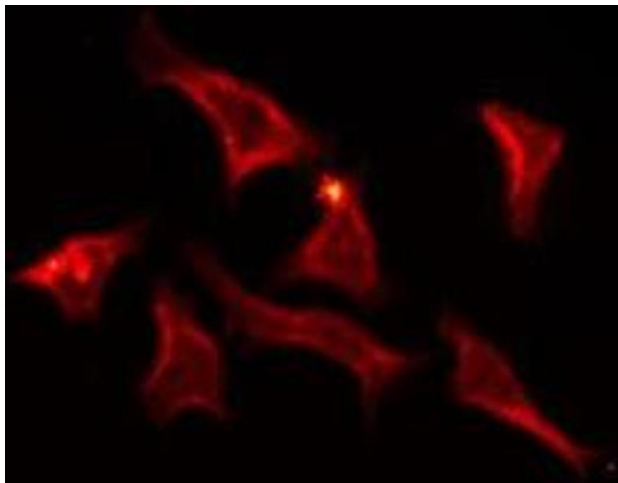
Alternative Name:	CNNM2 (CNNM2 Products)
Background:	Description: Divalent metal cation transporter. Mediates transport of divalent metal cations in an order of $Mg^{2+} > Co^{2+} > Mn^{2+} > Sr^{2+} > Ba^{2+} > Cu^{2+} > Fe^{2+}$ (By similarity). Gene: CNNM2
Molecular Weight:	100 kDa
Gene ID:	54805
UniProt:	Q9H8M5

Application Details

Application Notes:	WB 1:500-1:1000, IF/ICC 1:100-1:500, ELISA(peptide) 1:20000-1:40000
Restrictions:	For Research Use only

Handling

Format:	Liquid
Concentration:	1 mg/mL
Buffer:	Rabbit IgG in phosphate buffered saline , pH 7.4, 150 mM NaCl, 0.02 % sodium azide and 50 % glycerol.
Preservative:	Sodium azide
Precaution of Use:	This product contains Sodium azide: a POISONOUS AND HAZARDOUS SUBSTANCE which should be handled by trained staff only.
Storage:	-20 °C
Storage Comment:	Store at -20 °C. Stable for 12 months from date of receipt.
Expiry Date:	12 months



Immunofluorescence (fixed cells)

Image 1. ABIN6275798 staining HeLa by IF/ICC. The sample were fixed with PFA and permeabilized in 0.1% Triton X-100, then blocked in 10% serum for 45 minutes at 25°C. The primary antibody was diluted at 1/200 and incubated with the sample for 1 hour at 37°C. An Alexa Fluor 594 conjugated goat anti-rabbit IgG (H+L) Ab, diluted at 1/600, was used as the secondary antibody.