

Datasheet for ABIN6258500
anti-ARRDC3 antibody (C-Term)[Go to Product page](#)

3 Images

Overview

Quantity:	100 µL
Target:	ARRDC3
Binding Specificity:	C-Term
Reactivity:	Human, Rat, Mouse
Host:	Rabbit
Clonality:	Polyclonal
Application:	Western Blotting (WB), ELISA, Immunofluorescence (IF), Immunocytochemistry (ICC)

Product Details

Immunogen:	A synthesized peptide derived from human ARRDC3, corresponding to a region within C-terminal amino acids.
Isotype:	IgG
Specificity:	ARRDC3 Antibody detects endogenous levels of total ARRDC3.
Predicted Reactivity:	Bovine,Horse,Sheep,Rabbit,Dog,Chicken
Purification:	The antiserum was purified by peptide affinity chromatography using SulfoLink™ Coupling Resin (Thermo Fisher Scientific).

Target Details

Target:	ARRDC3
Alternative Name:	ARRDC3 (ARRDC3 Products)

Target Details

Background:	<p>Description: Adapter protein that plays a role in regulating cell-surface expression of adrenergic receptors and probably also other G protein-coupled receptors (PubMed:20559325, PubMed:21982743, PubMed:23208550). Plays a role in NEDD4-mediated ubiquitination and endocytosis of activated ADRB2 and subsequent ADRB2 degradation (PubMed:20559325, PubMed:23208550). May recruit NEDD4 to ADRB2 (PubMed:20559325). Alternatively, may function as adapter protein that does not play a major role in recruiting NEDD4 to ADRB2, but rather plays a role in targeting ADRB2 to endosomes (PubMed:23208550).</p> <p>Gene: ARRDC3</p>
-------------	--

Molecular Weight:	46 kDa
-------------------	--------

Gene ID:	57561
----------	-------

UniProt:	Q96B67
----------	------------------------

Application Details

Application Notes:	WB 1:500-1:1000, IF/ICC 1:100-1:500, ELISA(peptide) 1:20000-1:40000
--------------------	---

Restrictions:	For Research Use only
---------------	-----------------------

Handling

Format:	Liquid
---------	--------

Concentration:	1 mg/mL
----------------	---------

Buffer:	Rabbit IgG in phosphate buffered saline , pH 7.4, 150 mM NaCl, 0.02 % sodium azide and 50 % glycerol.
---------	---

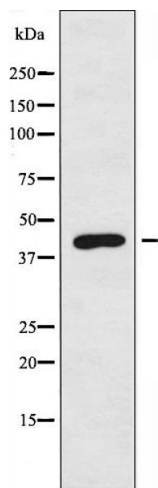
Preservative:	Sodium azide
---------------	--------------

Precaution of Use:	This product contains Sodium azide: a POISONOUS AND HAZARDOUS SUBSTANCE which should be handled by trained staff only.
--------------------	--

Storage:	-20 °C
----------	--------

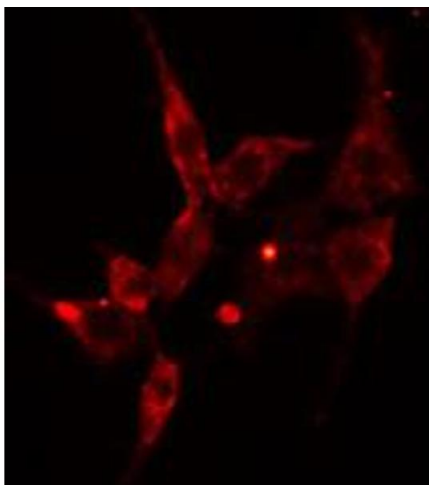
Storage Comment:	Store at -20 °C. Stable for 12 months from date of receipt.
------------------	---

Expiry Date:	12 months
--------------	-----------



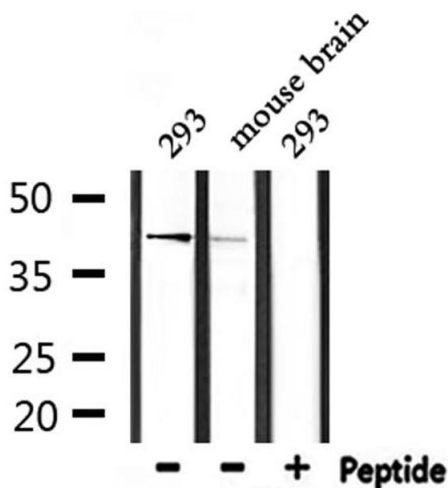
Western Blotting

Image 1. Western blot analysis of extracts from Jurkat cells using ARRDC3 antibody.



Immunofluorescence (fixed cells)

Image 2. ABIN6274589 staining HeLa cells by IF/ICC. The sample were fixed with PFA and permeabilized in 0.1% Triton X-100, then blocked in 10% serum for 45 minutes at 25°C. The primary antibody was diluted at 1/200 and incubated with the sample for 1 hour at 37°C. An Alexa Fluor 594 conjugated goat anti-rabbit IgG (H+L) antibody (Cat.# S0006), diluted at 1/600, was used as secondary antibody.



Western Blotting

Image 3. Western blot analysis of extracts from 293 and mouse brain, using ARRDC3 Antibody.