

Datasheet for ABIN6258502
anti-CDCA2 antibody (Internal Region)[Go to Product page](#)

4 Images

Overview

Quantity:	100 µL
Target:	CDCA2
Binding Specificity:	Internal Region
Reactivity:	Human, Mouse, Rat
Host:	Rabbit
Clonality:	Polyclonal
Conjugate:	This CDCA2 antibody is un-conjugated
Application:	Western Blotting (WB), ELISA, Immunohistochemistry (IHC), Immunofluorescence (IF), Immunocytochemistry (ICC)

Product Details

Immunogen:	A synthesized peptide derived from human CDCA2, corresponding to a region within the internal amino acids.
Isotype:	IgG
Specificity:	CDCA2 Antibody detects endogenous levels of total CDCA2.
Predicted Reactivity:	Pig,Bovine,Horse,Sheep,Rabbit,Dog
Purification:	The antiserum was purified by peptide affinity chromatography using SulfoLink™ Coupling Resin (Thermo Fisher Scientific).

Target Details

Target:	CDCA2
---------	-------

Target Details

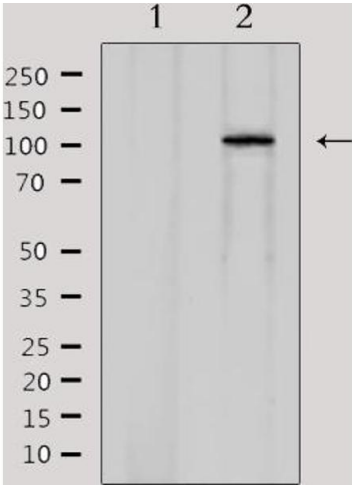
Alternative Name:	CDCA2 (CDCA2 Products)
Background:	<p>Description: Regulator of chromosome structure during mitosis required for condensin-depleted chromosomes to retain their compact architecture through anaphase. Acts by mediating the recruitment of phosphatase PP1-gamma subunit (PPP1CC) to chromatin at anaphase and into the following interphase. At anaphase onset, its association with chromatin targets a pool of PPP1CC to dephosphorylate substrates.</p> <p>Gene: CDCA2</p>
Molecular Weight:	113 kDa
Gene ID:	157313
UniProt:	Q69YH5

Application Details

Application Notes:	WB 1:500-1:1000, IF/ICC 1:100-1:500, IHC 1:50-1:200, ELISA(peptide) 1:20000-1:40000
Restrictions:	For Research Use only

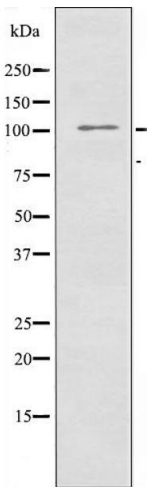
Handling

Format:	Liquid
Concentration:	1 mg/mL
Buffer:	Rabbit IgG in phosphate buffered saline , pH 7.4, 150 mM NaCl, 0.02 % sodium azide and 50 % glycerol.
Preservative:	Sodium azide
Precaution of Use:	This product contains Sodium azide: a POISONOUS AND HAZARDOUS SUBSTANCE which should be handled by trained staff only.
Storage:	-20 °C
Storage Comment:	Store at -20 °C. Stable for 12 months from date of receipt.
Expiry Date:	12 months



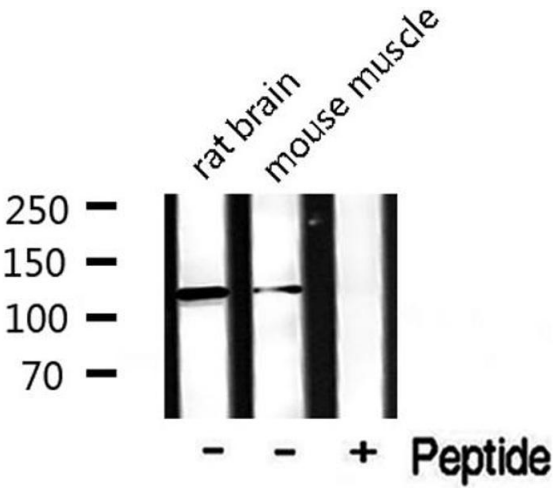
Western Blotting

Image 1. Western blot analysis of extracts from rat brain, using CDCA2 Antibody. Lane 1 was treated with the antigen-specific peptide.



Western Blotting

Image 2. Western blot analysis of extracts from 293 cells, using CDCA2 antibody.



Western Blotting

Image 3. Western blot analysis of extracts from rat and mouse brain, using CDCA2 antibody.

Please check the [product details page](#) for more images. Overall 4 images are available for ABIN6258502.