

Datasheet for ABIN6258520

anti-MRPL44 antibody[Go to Product page](#)

4 Images

Overview

Quantity:	100 µL
Target:	MRPL44
Reactivity:	Human, Rat, Mouse, Monkey
Host:	Rabbit
Clonality:	Polyclonal
Conjugate:	This MRPL44 antibody is un-conjugated
Application:	Western Blotting (WB), ELISA, Immunohistochemistry (IHC), Immunofluorescence (IF), Immunocytochemistry (ICC)

Product Details

Immunogen:	A synthesized peptide
Isotype:	IgG
Specificity:	MRPL44 Antibody detects endogenous levels of total MRPL44
Cross-Reactivity:	Human, Monkey, Mouse (Murine), Rat (Rattus)
Purification:	The antiserum was purified by peptide affinity chromatography using SulfoLink™ Coupling Resin (Thermo Fisher Scientific).

Target Details

Target:	MRPL44
Alternative Name:	MRPL44 (MRPL44 Products)

Target Details

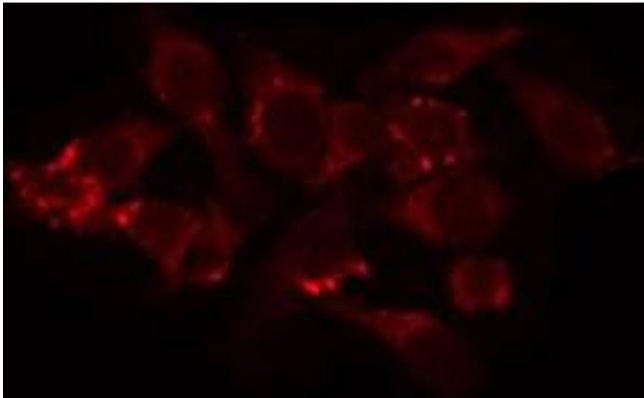
Background:	Description: Component of the 39S subunit of mitochondrial ribosome. May have a function in the assembly/stability of nascent mitochondrial polypeptides exiting the ribosome. Gene: MRPL44
Molecular Weight:	36 kDa
Gene ID:	65080
UniProt:	Q9H9J2

Application Details

Application Notes:	WB 1:500~1:1000 IHC: 1:50~1:200 IF/ICC 1:100-1:500
Restrictions:	For Research Use only

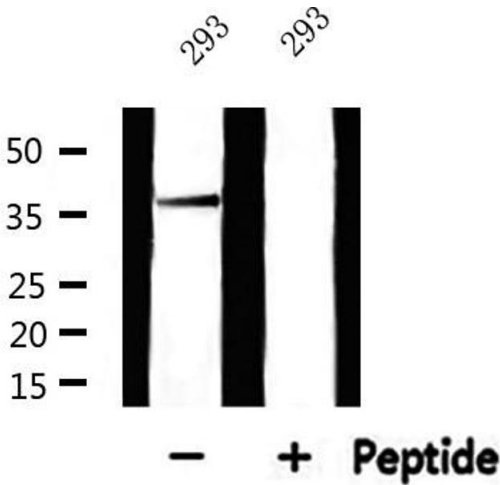
Handling

Format:	Liquid
Concentration:	1 mg/mL
Buffer:	Rabbit IgG in phosphate buffered saline , pH 7.4, 150 mM NaCl, 0.02 % sodium azide and 50 % glycerol.
Preservative:	Sodium azide
Precaution of Use:	This product contains Sodium azide: a POISONOUS AND HAZARDOUS SUBSTANCE which should be handled by trained staff only.
Storage:	-20 °C
Storage Comment:	Store at -20 °C.Stable for 12 months from date of receipt
Expiry Date:	12 months



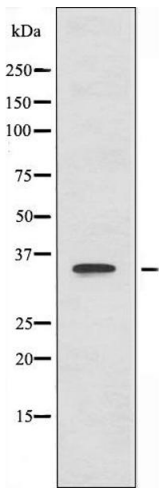
Immunofluorescence (fixed cells)

Image 1. ABIN6274742 staining COS7 by IF/ICC. The sample were fixed with PFA and permeabilized in 0.1% Triton X-100, then blocked in 10% serum for 45 minutes at 25°C. The primary antibody was diluted at 1/200 and incubated with the sample for 1 hour at 37°C. An Alexa Fluor 594 conjugated goat anti-rabbit IgG (H+L) Ab, diluted at 1/600, was used as the secondary antibody.



Western Blotting

Image 2. Western blot analysis of extracts from 293, using MRPL44 Antibody.



Western Blotting

Image 3. Western blot analysis of extracts from COS-7 cells, using MRPL44 antibody.

Please check the [product details page](#) for more images. Overall 4 images are available for ABIN6258520.