

Datasheet for ABIN6258521  
**anti-MRPL46 antibody (C-Term)**

## 3 Images

[Go to Product page](#)

## Overview

Quantity:	100 µL
Target:	MRPL46
Binding Specificity:	C-Term
Reactivity:	Human, Mouse, Rat
Host:	Rabbit
Clonality:	Polyclonal
Conjugate:	This MRPL46 antibody is un-conjugated
Application:	Western Blotting (WB), ELISA, Immunohistochemistry (IHC), Immunofluorescence (IF), Immunocytochemistry (ICC)

## Product Details

Immunogen:	A synthesized peptide derived from human MRPL46, corresponding to a region within C-terminal amino acids.
Isotype:	IgG
Specificity:	MRPL46 Antibody detects endogenous levels of total MRPL46.
Predicted Reactivity:	Horse,Rabbit,Dog
Purification:	The antiserum was purified by peptide affinity chromatography using SulfoLink™ Coupling Resin (Thermo Fisher Scientific).

## Target Details

Target:	MRPL46
---------	--------

## Target Details

Alternative Name: MRPL46 ([MRPL46 Products](#))

Background: Gene: MRPL46

Molecular Weight: 32 kDa

Gene ID: 26589

UniProt: [Q9H2W6](#)

## Application Details

Application Notes: WB 1:500-1:1000, IHC: 1:50-1:200, IF/ICC 1:100-1:500, ELISA(peptide) 1:20000-1:40000

Restrictions: For Research Use only

## Handling

Format: Liquid

Concentration: 1 mg/mL

Buffer: Rabbit IgG in phosphate buffered saline , pH 7.4, 150 mM NaCl, 0.02 % sodium azide and 50 % glycerol.

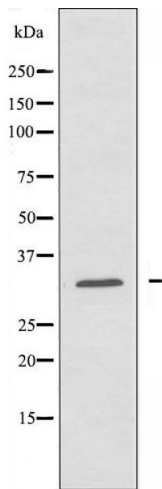
Preservative: Sodium azide

Precaution of Use: This product contains Sodium azide: a POISONOUS AND HAZARDOUS SUBSTANCE which should be handled by trained staff only.

Storage: -20 °C

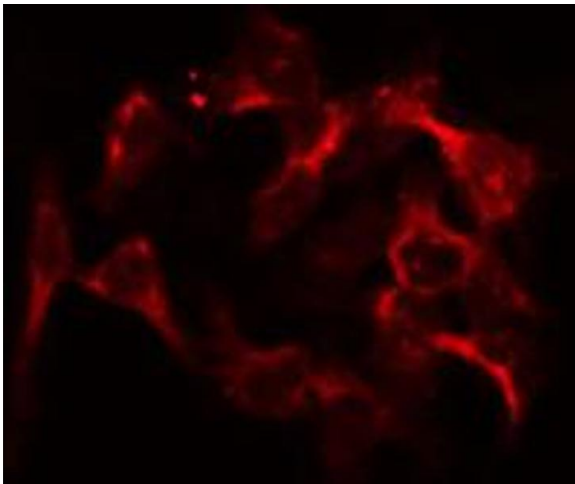
Storage Comment: Store at -20 °C. Stable for 12 months from date of receipt.

Expiry Date: 12 months



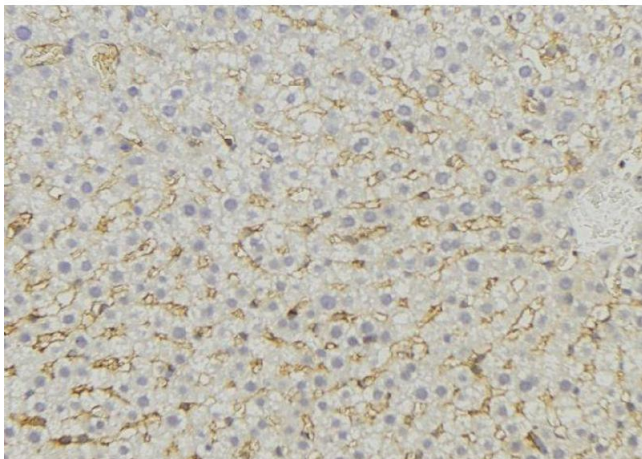
### Western Blotting

**Image 1.** Western blot analysis of extracts from HeLa cells, using MRPL46 antibody.



### Immunofluorescence (fixed cells)

**Image 2.** ABIN6274743 staining HeLa by IF/ICC. The sample were fixed with PFA and permeabilized in 0.1% Triton X-100, then blocked in 10% serum for 45 minutes at 25°C. The primary antibody was diluted at 1/200 and incubated with the sample for 1 hour at 37°C. An Alexa Fluor 594 conjugated goat anti-rabbit IgG (H+L) Ab, diluted at 1/600, was used as the secondary antibody.



### Immunohistochemistry

**Image 3.** ABIN6274743 at 1/100 staining Mouse liver tissue by IHC-P. The sample was formaldehyde fixed and a heat mediated antigen retrieval step in citrate buffer was performed. The sample was then blocked and incubated with the antibody for 1.5 hours at 22°C. An HRP conjugated goat anti-rabbit antibody was used as the secondary