

Datasheet for ABIN6258525
anti-RPL10L antibody (C-Term)[Go to Product page](#)

2 Images

Overview

Quantity:	100 µL
Target:	RPL10L
Binding Specificity:	C-Term
Reactivity:	Human
Host:	Rabbit
Clonality:	Polyclonal
Conjugate:	This RPL10L antibody is un-conjugated
Application:	Western Blotting (WB), ELISA, Immunohistochemistry (IHC), Immunofluorescence (IF), Immunocytochemistry (ICC)

Product Details

Immunogen:	A synthesized peptide derived from human RPL10L, corresponding to a region within C-terminal amino acids.
Isotype:	IgG
Specificity:	RPL10L Antibody detects endogenous levels of total RPL10L.
Predicted Reactivity:	Pig,Bovine,Sheep,Dog
Purification:	The antiserum was purified by peptide affinity chromatography using SulfoLink™ Coupling Resin (Thermo Fisher Scientific).

Target Details

Target:	RPL10L
---------	--------

Target Details

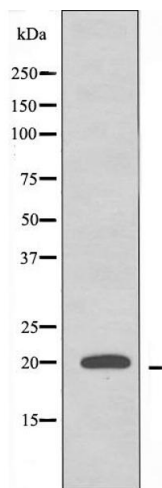
Alternative Name:	RPL10L (RPL10L Products)
Background:	Description: May play a role in compensating for the inactivated X-linked gene during spermatogenesis. Gene: RPL10L
Molecular Weight:	20 kDa
Gene ID:	140801
UniProt:	Q96L21

Application Details

Application Notes:	WB 1:500-1:1000, IF/ICC 1:100-1:500, IHC 1:50-1:200, ELISA(peptide) 1:20000-1:40000
Restrictions:	For Research Use only

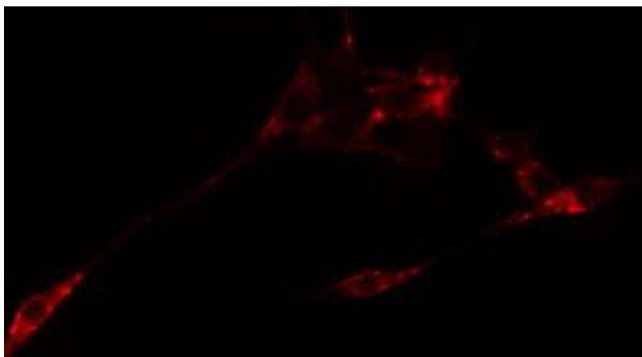
Handling

Format:	Liquid
Concentration:	1 mg/mL
Buffer:	Rabbit IgG in phosphate buffered saline , pH 7.4, 150 mM NaCl, 0.02 % sodium azide and 50 % glycerol.
Preservative:	Sodium azide
Precaution of Use:	This product contains Sodium azide: a POISONOUS AND HAZARDOUS SUBSTANCE which should be handled by trained staff only.
Storage:	-20 °C
Storage Comment:	Store at -20 °C. Stable for 12 months from date of receipt.
Expiry Date:	12 months



Western Blotting

Image 1. Western blot analysis of extracts from HeLa cells using RPL10L antibody.



Immunofluorescence (fixed cells)

Image 2. ABIN6274766 staining HeLa cells by IF/ICC. The sample were fixed with PFA and permeabilized in 0.1% Triton X-100, then blocked in 10% serum for 45 minutes at 25°C. The primary antibody was diluted at 1/200 and incubated with the sample for 1 hour at 37°C. An Alexa Fluor 594 conjugated goat anti-rabbit IgG (H+L) antibody (Cat.# S0006), diluted at 1/600, was used as secondary antibody.