

Datasheet for ABIN6258544
anti-CLIP3 antibody (Internal Region)

3 Images

1 Publication

[Go to Product page](#)

Overview

Quantity:	100 µL
Target:	CLIP3
Binding Specificity:	Internal Region
Reactivity:	Human, Mouse, Rat
Host:	Rabbit
Clonality:	Polyclonal
Conjugate:	This CLIP3 antibody is un-conjugated
Application:	Western Blotting (WB), ELISA, Immunofluorescence (IF), Immunocytochemistry (ICC)

Product Details

Immunogen:	A synthesized peptide derived from human CLIP3, corresponding to a region within the internal amino acids.
Isotype:	IgG
Specificity:	CLIP3 Antibody detects endogenous levels of total CLIP3.
Predicted Reactivity:	Pig,Bovine,Horse,Sheep,Rabbit,Dog
Purification:	The antiserum was purified by peptide affinity chromatography using SulfoLink™ Coupling Resin (Thermo Fisher Scientific).

Target Details

Target:	CLIP3
---------	-------

Target Details

Alternative Name:	CLIP3 (CLIP3 Products)
Background:	Description: Functions as a cytoplasmic linker protein. Involved in TGN-endosome dynamics. May modulate the cellular compartmentalization of AKT kinase family and promote its cell membrane localization, thereby playing a role in glucose transport in adipocytes. Gene: CLIP3
Molecular Weight:	60 kDa
Gene ID:	25999
UniProt:	Q96DZ5

Application Details

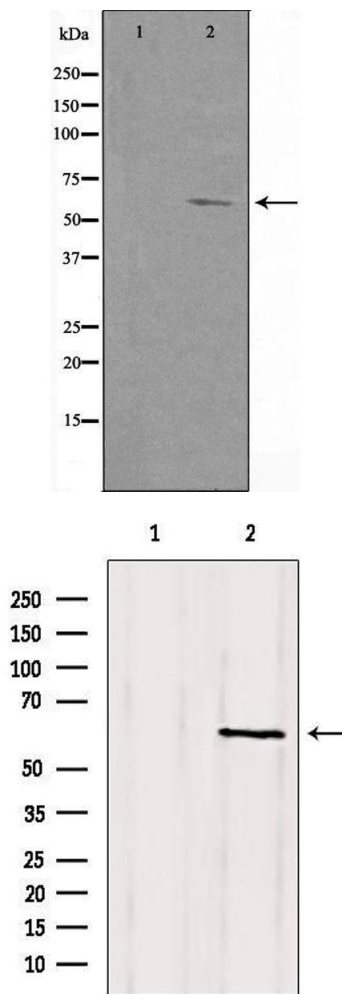
Application Notes:	WB 1:500-1:1000, IF/ICC 1:100-1:500, ELISA(peptide) 1:20000-1:40000
Restrictions:	For Research Use only

Handling

Format:	Liquid
Concentration:	1 mg/mL
Buffer:	Rabbit IgG in phosphate buffered saline , pH 7.4, 150 mM NaCl, 0.02 % sodium azide and 50 % glycerol.
Preservative:	Sodium azide
Precaution of Use:	This product contains Sodium azide: a POISONOUS AND HAZARDOUS SUBSTANCE which should be handled by trained staff only.
Storage:	-20 °C
Storage Comment:	Store at -20 °C. Stable for 12 months from date of receipt.
Expiry Date:	12 months

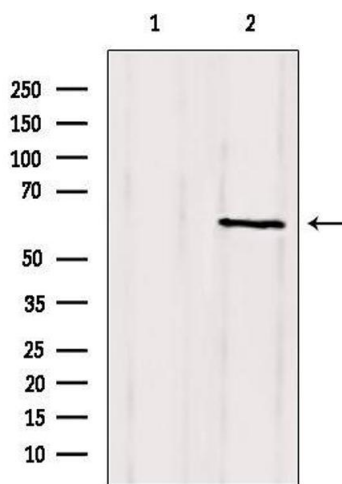
Publications

Product cited in:	Chen, Chen, Hao, Zhang, Zhang: "Effect of CLIP3 Upregulation on Astrocyte Proliferation and Subsequent Glial Scar Formation in the Rat Spinal Cord via STAT3 Pathway After Injury." in: Journal of molecular neuroscience : MN , Vol. 64, Issue 1, pp. 117-128, (2018) (PubMed).
-------------------	---



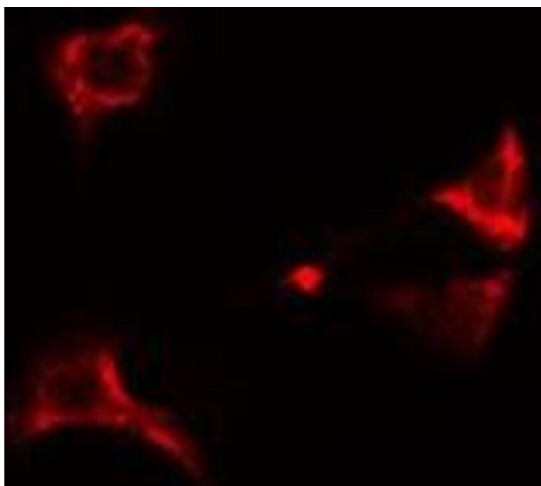
Western Blotting

Image 1. Western blot analysis of extracts from A549 cells, using CLIP3 antibody. The lane on the left is treated with the antigen-specific peptide.



Western Blotting

Image 2. Western blot analysis of extracts from mouse brain, using CLIP3 Antibody. Lane 1 was treated with the blocking peptide.



Immunofluorescence (fixed cells)

Image 3. ABIN6274949 staining A549 cells by IF/ICC. The sample were fixed with PFA and permeabilized in 0.1% Triton X-100, then blocked in 10% serum for 45 minutes at 25°C. The primary antibody was diluted at 1/200 and incubated with the sample for 1 hour at 37°C. An Alexa Fluor 594 conjugated goat anti-rabbit IgG (H+L) antibody (Cat.# S0006), diluted at 1/600, was used as secondary antibody.