



[Go to Product page](#)

Datasheet for ABIN6258546  
**anti-CCDC102A antibody (Internal Region)**

2 Images

Overview

Quantity:	100 µL
Target:	CCDC102A
Binding Specificity:	Internal Region
Reactivity:	Mouse, Human
Host:	Rabbit
Clonality:	Polyclonal
Conjugate:	This CCDC102A antibody is un-conjugated
Application:	Western Blotting (WB), ELISA, Immunocytochemistry (ICC), Immunofluorescence (IF)

Product Details

Immunogen:	A synthesized peptide derived from human CCDC102A, corresponding to a region within the internal amino acids.
Isotype:	IgG
Specificity:	CCDC102A Antibody detects endogenous levels of total CCDC102A.
Predicted Reactivity:	Pig,Zebrafish,Bovine,Sheep,Dog,Chicken,Xenopus
Purification:	The antiserum was purified by peptide affinity chromatography using SulfoLink™ Coupling Resin (Thermo Fisher Scientific).

Target Details

Target:	CCDC102A
---------	----------

## Target Details

---

Alternative Name: CCDC102A ([CCDC102A Products](#))

Background: Gene: CCDC102A

Molecular Weight: 55 kDa

Gene ID: 92922

UniProt: [Q96A19](#)

## Application Details

---

Application Notes: WB 1:500-1:1000, IF/ICC 1:100-1:500, ELISA(peptide) 1:20000-1:40000

Restrictions: For Research Use only

## Handling

---

Format: Liquid

Concentration: 1 mg/mL

Buffer: Rabbit IgG in phosphate buffered saline , pH 7.4, 150 mM NaCl, 0.02 % sodium azide and 50 % glycerol.

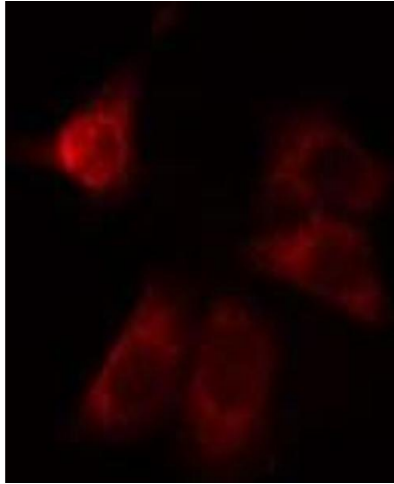
Preservative: Sodium azide

Precaution of Use: This product contains Sodium azide: a POISONOUS AND HAZARDOUS SUBSTANCE which should be handled by trained staff only.

Storage: -20 °C

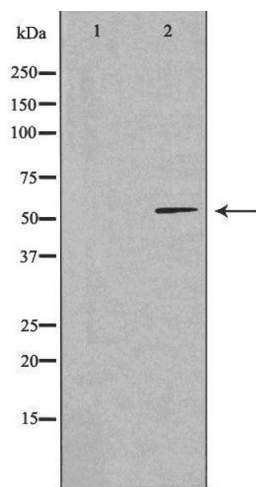
Storage Comment: Store at -20 °C. Stable for 12 months from date of receipt.

Expiry Date: 12 months



### Immunofluorescence (fixed cells)

**Image 1.** ABIN6275024 staining LOVO cells by IF/ICC. The sample were fixed with PFA and permeabilized in 0.1% Triton X-100, then blocked in 10% serum for 45 minutes at 25°C. The primary antibody was diluted at 1/200 and incubated with the sample for 1 hour at 37°C. An Alexa Fluor 594 conjugated goat anti-rabbit IgG (H+L) antibody (Cat.# S0006), diluted at 1/600, was used as secondary antibody



### Western Blotting

**Image 2.** Western blot analysis of extracts from LOVO cells, using CCDC102A antibody. The lane on the left is treated with the antigen-specific peptide.