

Datasheet for ABIN6258552  
**anti-Nesprin3 antibody (N-Term)**[Go to Product page](#)

## 1 Image

## Overview

Quantity:	100 µL
Target:	Nesprin3 (C14orf49)
Binding Specificity:	N-Term
Reactivity:	Human, Mouse
Host:	Rabbit
Clonality:	Polyclonal
Conjugate:	This Nesprin3 antibody is un-conjugated
Application:	Western Blotting (WB), ELISA, Immunofluorescence (IF), Immunocytochemistry (ICC)

## Product Details

Immunogen:	A synthesized peptide derived from human C14orf49, corresponding to a region within N-terminal amino acids.
Isotype:	IgG
Specificity:	C14orf49 Antibody detects endogenous levels of total C14orf49.
Predicted Reactivity:	Pig,Bovine,Horse,Sheep,Rabbit,Dog,Chicken
Purification:	The antiserum was purified by peptide affinity chromatography using SulfoLink™ Coupling Resin (Thermo Fisher Scientific).

## Target Details

Target:	Nesprin3 (C14orf49)
---------	---------------------

## Target Details

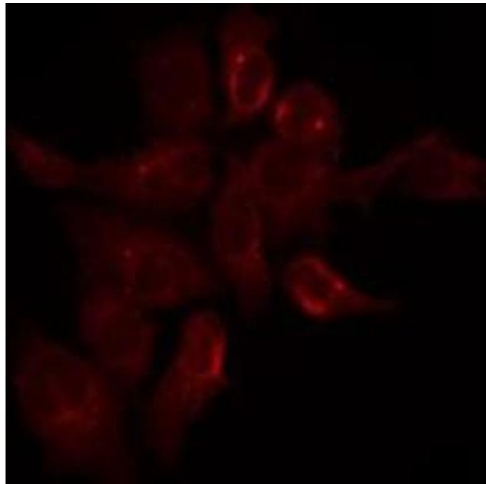
Alternative Name:	SYNE3 ( <a href="#">C14orf49 Products</a> )
Background:	<p>Description: As a component of the LINC (Linker of Nucleoskeleton and Cytoskeleton) complex involved in the connection between the nuclear lamina and the cytoskeleton. The nucleocytoplasmic interactions established by the LINC complex play an important role in the transmission of mechanical forces across the nuclear envelope and in nuclear movement and positioning. Probable anchoring protein which tethers the nucleus to the cytoskeleton by binding PLEC which can associate with the intermediate filament system. Plays a role in the regulation of aortic epithelial cell morphology, and is required for flow-induced centrosome polarization and directional migration in aortic endothelial cells.</p> <p>Gene: SYNE3</p>
Molecular Weight:	130 kDa
Gene ID:	161176
UniProt:	<a href="#">Q6ZMZ3</a>
Pathways:	<a href="#">Maintenance of Protein Location</a>

## Application Details

Application Notes:	WB 1:500-1:1000, IF/ICC 1:200, ELISA(peptide) 1:20000-1:40000
Restrictions:	For Research Use only

## Handling

Format:	Liquid
Concentration:	1 mg/mL
Buffer:	Rabbit IgG in phosphate buffered saline , pH 7.4, 150 mM NaCl, 0.02 % sodium azide and 50 % glycerol.
Preservative:	Sodium azide
Precaution of Use:	This product contains Sodium azide: a POISONOUS AND HAZARDOUS SUBSTANCE which should be handled by trained staff only.
Storage:	-20 °C
Storage Comment:	Store at -20 °C. Stable for 12 months from date of receipt.
Expiry Date:	12 months



#### Immunofluorescence (fixed cells)

**Image 1.** ABIN6275289 staining HeLa by IF/ICC. The sample were fixed with PFA and permeabilized in 0.1% Triton X-100, then blocked in 10% serum for 45 minutes at 25°C. The primary antibody was diluted at 1/200 and incubated with the sample for 1 hour at 37°C. An Alexa Fluor 594 conjugated goat anti-rabbit IgG (H+L) Ab, diluted at 1/600, was used as the secondary antibody.