



[Go to Product page](#)

Datasheet for ABIN6258556

anti-POTEB antibody

2 Images

Overview

Quantity:	100 µL
Target:	POTEB
Reactivity:	Human
Host:	Rabbit
Clonality:	Polyclonal
Conjugate:	This POTEB antibody is un-conjugated
Application:	Western Blotting (WB), ELISA, Immunocytochemistry (ICC), Immunofluorescence (IF)

Product Details

Immunogen:	A synthesized peptide
Isotype:	IgG
Specificity:	A26B1 Antibody detects endogenous levels of total A26B1
Cross-Reactivity:	Human
Purification:	The antiserum was purified by peptide affinity chromatography using SulfoLink™ Coupling Resin (Thermo Fisher Scientific).

Target Details

Target:	POTEB
Alternative Name:	A26B1 (POTEB Products)
Molecular Weight:	60 kDa

Target Details

UniProt: [Q6S5H4](#)

Application Details

Application Notes: WB 1:500~1:1000, IF/ICC 1:100-1:500

Restrictions: For Research Use only

Handling

Format: Liquid

Concentration: 1 mg/mL

Buffer: Rabbit IgG in phosphate buffered saline , pH 7.4, 150 mM NaCl, 0.02 % sodium azide and 50 % glycerol.

Preservative: Sodium azide

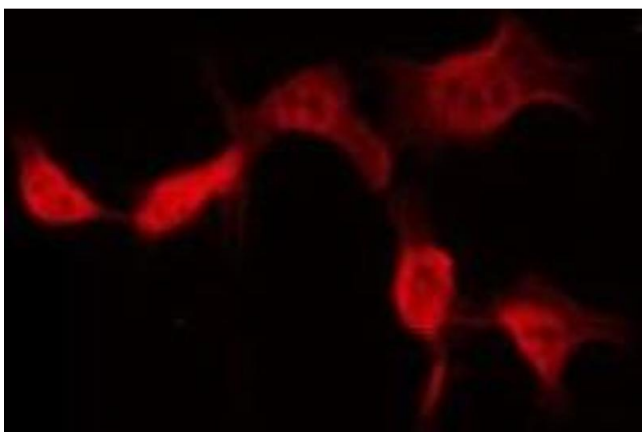
Precaution of Use: This product contains Sodium azide: a POISONOUS AND HAZARDOUS SUBSTANCE which should be handled by trained staff only.

Storage: -20 °C

Storage Comment: Store at -20 °C.Stable for 12 months from date of receipt

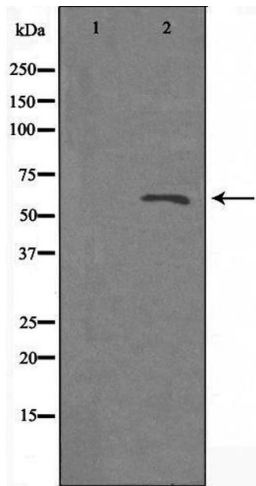
Expiry Date: 12 months

Images



Immunofluorescence (fixed cells)

Image 1. ABIN6275402 staining Hela by IF/ICC. The sample were fixed with PFA and permeabilized in 0.1% Triton X-100, then blocked in 10% serum for 45 minutes at 25°C. The primary antibody was diluted at 1/200 and incubated with the sample for 1 hour at 37°C. An Alexa Fluor 594 conjugated goat anti-rabbit IgG (H+L) Ab, diluted at 1/600, was used as the secondary antibody



Western Blotting

Image 2. Western blot analysis of extracts from Jurkat cells, using A26B1 antibody. The lane on the left is treated with the antigen-specific peptide.