

Datasheet for ABIN6258559  
**anti-SLC4A11 antibody (Internal Region)**[Go to Product page](#)

## 2 Images

## Overview

Quantity:	100 µL
Target:	SLC4A11
Binding Specificity:	Internal Region
Reactivity:	Human, Mouse
Host:	Rabbit
Clonality:	Polyclonal
Conjugate:	This SLC4A11 antibody is un-conjugated
Application:	Western Blotting (WB), ELISA, Immunocytochemistry (ICC), Immunofluorescence (IF)

## Product Details

Immunogen:	A synthesized peptide derived from human SLC4A11, corresponding to a region within the internal amino acids.
Isotype:	IgG
Specificity:	SLC4A11 Antibody detects endogenous levels of total SLC4A11.
Purification:	The antiserum was purified by peptide affinity chromatography using SulfoLink™ Coupling Resin (Thermo Fisher Scientific).

## Target Details

Target:	SLC4A11
Alternative Name:	SLC4A11 ( <a href="#">SLC4A11 Products</a> )

## Target Details

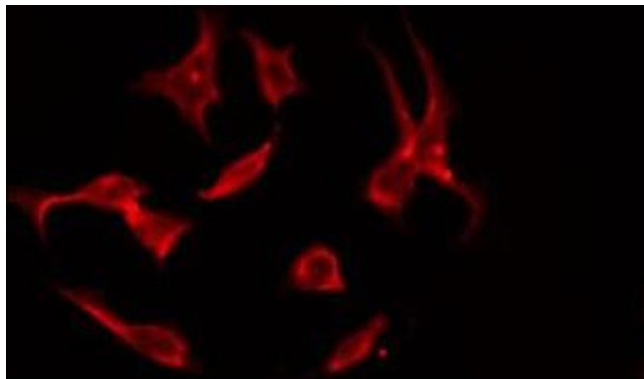
Background:	<p>Description: Transporter which plays an important role in sodium-mediated fluid transport in different organs. Prevents severe morphological changes of the cornea caused by increased sodium chloride concentrations in the stroma. In the inner ear, is involved in transport of potassium through the fibrocyte layer to the stria vascularis and is essential for the generation of the endocochlear potential but not for regulation of potassium concentrations in the endolymph. In the kidney, is essential for urinary concentration, mediates a sodium flux into the thin descending limb of Henle loop to allow countercurrent multiplication by osmotic equilibration (By similarity). Involved in borate homeostasis. In the absence of borate, it functions as a Na<sup>+</sup> and OH<sup>-</sup>(H<sup>+</sup>) channel. In the presence of borate functions as an electrogenic Na<sup>+</sup> coupled borate cotransporter.</p> <p>Gene: SLC4A11</p>
Molecular Weight:	100 kDa
Gene ID:	83959
UniProt:	<a href="#">Q8NBS3</a>
Pathways:	<a href="#">Proton Transport</a>

## Application Details

Application Notes:	WB 1:500-1:1000, IF/ICC 1:100-1:500, ELISA(peptide) 1:20000-1:40000
Restrictions:	For Research Use only

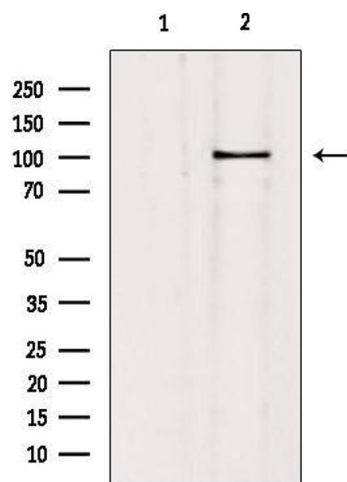
## Handling

Format:	Liquid
Concentration:	1 mg/mL
Buffer:	Rabbit IgG in phosphate buffered saline , pH 7.4, 150 mM NaCl, 0.02 % sodium azide and 50 % glycerol.
Preservative:	Sodium azide
Precaution of Use:	This product contains Sodium azide: a POISONOUS AND HAZARDOUS SUBSTANCE which should be handled by trained staff only.
Storage:	-20 °C
Storage Comment:	Store at -20 °C. Stable for 12 months from date of receipt.
Expiry Date:	12 months



#### Immunofluorescence (fixed cells)

**Image 1.** ABIN6275575 staining NIH-3T3 by IF/ICC. The sample were fixed with PFA and permeabilized in 0.1% Triton X-100, then blocked in 10% serum for 45 minutes at 25°C. The primary antibody was diluted at 1/200 and incubated with the sample for 1 hour at 37°C. An Alexa Fluor 594 conjugated goat anti-rabbit IgG (H+L) Ab, diluted at 1/600, was used as the secondary antibody



#### Western Blotting

**Image 2.** Western blot analysis of extracts from mouse brain, using SLC4A11 Antibody. Lane 1 was treated with the blocking peptide.