



[Go to Product page](#)

Datasheet for ABIN625856  
**anti-CLIC4 antibody (N-Term)**

2 Images

Overview

Quantity:	100 µL
Target:	CLIC4
Binding Specificity:	N-Term
Reactivity:	Human, Mouse, Rat, Guinea Pig, Monkey
Host:	Rabbit
Clonality:	Polyclonal
Application:	Western Blotting (WB), Immunohistochemistry (IHC), Immunohistochemistry (Paraffin-embedded Sections) (IHC (p))

Product Details

Brand:	IHC-plus™
Immunogen:	Synthetic peptide from N-Terminus of human CLIC4 (NP_039234). Percent identity by BLAST analysis: Human, Chimpanzee, Orangutan, Gibbon, Monkey, Marmoset, Mouse, Rat, Guinea pig (100%), Panda, Dog, Bovine (92%), Zebra finch (85%).  Type of Immunogen: Synthetic peptide
Specificity:	Human CLIC4
Predicted Reactivity:	Percent identity by BLAST analysis: Human, Mouse, Rat (100%) Dog, Bovine (92%).
Purification:	Protein A purified

## Target Details

---

Target:	CLIC4
Alternative Name:	CLIC4 ( <a href="#">CLIC4 Products</a> )
Background:	Name/Gene ID: CLIC4 Subfamily: Chloride channel - intracellular Family: Ion Channel  Synonyms: CLIC4, CLIC4L, DKFZP566G223, Mc3s5, HuH1, MTCLIC, p64H1
Gene ID:	25932
NCBI Accession:	<a href="#">NP_039234</a>
UniProt:	<a href="#">Q9Y696</a>

## Application Details

---

Application Notes:	Approved: IHC, IHC-P (20 µg/mL), WB (2.5 µg/mL)  Usage: Immunohistochemistry: This antibody was validated for use in immunohistochemistry on a panel of 21 formalin-fixed, paraffin-embedded (FFPE) human tissues after heat induced antigen retrieval in pH 6.0 citrate buffer. After incubation with the primary antibody, slides were incubated with biotinylated secondary antibody, followed by alkaline phosphatase-streptavidin and chromogen. The stained slides were evaluated by a pathologist to confirm staining specificity. The optimal working concentration for this antibody was determined to be 20 µg/mL.
Comment:	Target Species of Antibody: Human
Restrictions:	For Research Use only

## Handling

---

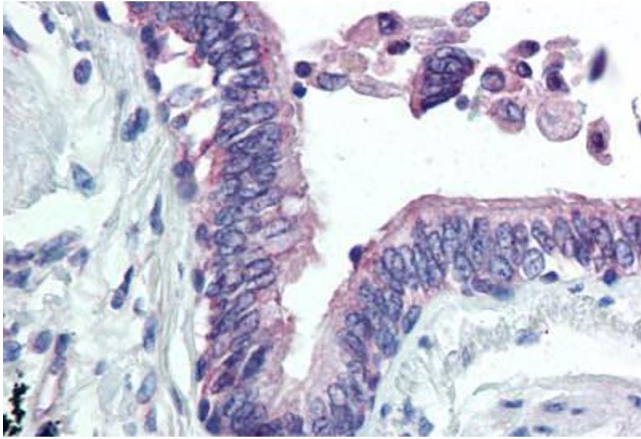
Format:	Lyophilized
Concentration:	Lot specific
Buffer:	Lyophilized from PBS with 2 % sucrose
Handling Advice:	Avoid repeated freezing and thawing.
Storage:	4 °C,-20 °C
Storage Comment:	Long term: -20°C, the use of 50% glycerol is recommended if storing aliquots in -20°C for long

term use (up to 1 year)

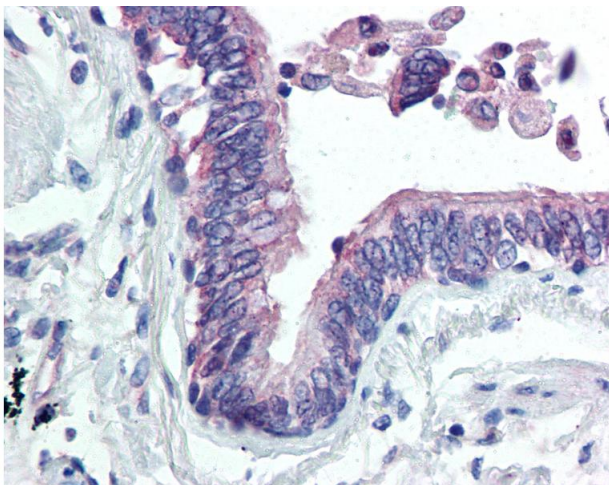
Short term (less than 1 week): 4°C. Avoid freeze-thaw cycles.

## Images

---



**Image 1.** Lung, respiratory epithelium



### Immunohistochemistry

**Image 2.** Anti-CLIC4 antibody IHC of human lung. Immunohistochemistry of formalin-fixed, paraffin-embedded tissue after heat-induced antigen retrieval. Antibody concentration 20 ug/ml. This image was taken for the unconjugated form of this product. Other form ...