

Datasheet for ABIN6258570  
**anti-YWHAE antibody (C-Term)**

## 3 Images

[Go to Product page](#)

## Overview

|                      |  |
|----------------------|--|
| Quantity:            | 100 µL   |
| Target:              | YWHAE  |
| Binding Specificity: | C-Term   |
| Reactivity:          | Human, Mouse, Rat  |
| Host:                | Rabbit   |
| Clonality:           | Polyclonal   |
| Conjugate:           | This YWHAE antibody is un-conjugated   |
| Application:         | Western Blotting (WB), ELISA, Immunohistochemistry (IHC), Immunofluorescence (IF), Immunocytochemistry (ICC) |

## Product Details

|                       |   |
|-----------------------|---|
| Immunogen:            | A synthesized peptide derived from human 14-3-3 epsilon, corresponding to a region within C-terminal amino acids.         |
| Isotype:              | IgG   |
| Specificity:          | 14-3-3 epsilon Antibody detects endogenous levels of total 14-3-3 epsilon.  |
| Predicted Reactivity: | Pig,Bovine,Horse,Sheep,Rabbit,Chicken,Xenopus   |
| Purification:         | The antiserum was purified by peptide affinity chromatography using SulfoLink™ Coupling Resin (Thermo Fisher Scientific). |

## Target Details

|         |       |
|---------|-------|
| Target: | YWHAE |
|---------|-------|

## Target Details

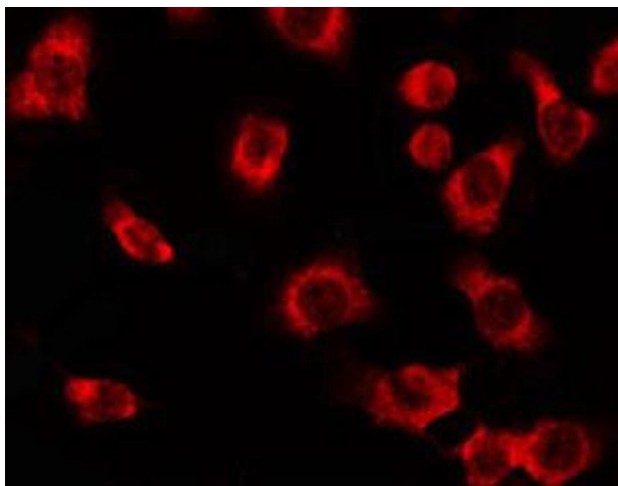
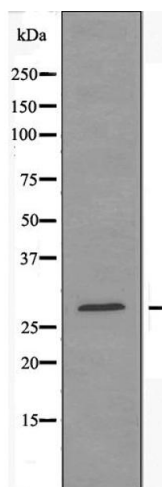
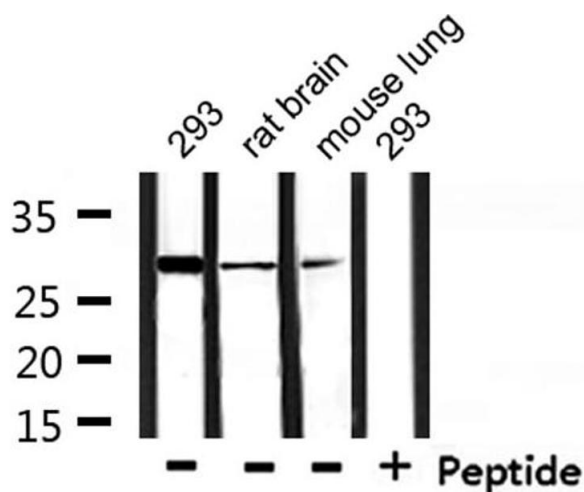
|                   |   |
|-------------------|---|
| Alternative Name: | YWHAE ( <a href="#">YWHAE Products</a> )  |
| Background:       | <p>Description: Adapter protein implicated in the regulation of a large spectrum of both general and specialized signaling pathways. Binds to a large number of partners, usually by recognition of a phosphoserine or phosphothreonine motif. Binding generally results in the modulation of the activity of the binding partner (By similarity). Positively regulates phosphorylated protein HSF1 nuclear export to the cytoplasm (PubMed:12917326).</p> <p>Gene: YWHAE</p> |
| Molecular Weight: | 29 kDa  |
| Gene ID:          | 7531  |
| UniProt:          | <a href="#">P62258</a>  |
| Pathways:         | <a href="#">Neurotrophin Signaling Pathway</a> , <a href="#">Myometrial Relaxation and Contraction</a> , <a href="#">M Phase</a>  |

## Application Details

|                    |   |
|--------------------|---|
| Application Notes: | WB 1:500-1:1000, IF/ICC 1:100-1:500, IHC 1:50-1:200, ELISA(peptide) 1:20000-1:40000 |
| Restrictions:      | For Research Use only   |

## Handling

|                    |  |
|--------------------|--|
| Format:            | Liquid   |
| Concentration:     | 1 mg/mL  |
| Buffer:            | Rabbit IgG in phosphate buffered saline , pH 7.4, 150 mM NaCl, 0.02 % sodium azide and 50 % glycerol.                  |
| Preservative:      | Sodium azide   |
| Precaution of Use: | This product contains Sodium azide: a POISONOUS AND HAZARDOUS SUBSTANCE which should be handled by trained staff only. |
| Storage:           | -20 °C   |
| Storage Comment:   | Store at -20 °C. Stable for 12 months from date of receipt.  |
| Expiry Date:       | 12 months  |



#### Western Blotting

**Image 1.** Western blot analysis of extracts from 293 and rat brain mouse lung, using 14-3-3  $\epsilon$  Antibody.

#### Western Blotting

**Image 2.** Western blot analysis of extracts from HepG2 cells using 14-3-3  $\epsilon$  antibody.

#### Immunofluorescence (fixed cells)

**Image 3.** ABIN6274563 staining HepG2 by IF/ICC. The sample were fixed with PFA and permeabilized in 0.1% Triton X-100, then blocked in 10% serum for 45 minutes at 25°C. The primary antibody was diluted at 1/200 and incubated with the sample for 1 hour at 37°C. An Alexa Fluor 594 conjugated goat anti-rabbit IgG (H+L) Ab, diluted at 1/600, was used as the secondary antibody.