



[Go to Product page](#)

Datasheet for ABIN6258577

## anti-ACAT1 antibody (Internal Region)

### 3 Images

#### Overview

Quantity:	100 µL
Target:	ACAT1
Binding Specificity:	Internal Region
Reactivity:	Human, Mouse, Rat
Host:	Rabbit
Clonality:	Polyclonal
Conjugate:	This ACAT1 antibody is un-conjugated
Application:	Western Blotting (WB), ELISA, Immunohistochemistry (IHC), Immunofluorescence (IF), Immunocytochemistry (ICC)

#### Product Details

Immunogen:	A synthesized peptide derived from human ACAT1, corresponding to a region within the internal amino acids.
Isotype:	IgG
Specificity:	ACAT1 Antibody detects endogenous levels of total ACAT1.
Predicted Reactivity:	Zebrafish,Bovine,Horse,Sheep,Rabbit,Dog,Chicken
Purification:	The antiserum was purified by peptide affinity chromatography using SulfoLink™ Coupling Resin (Thermo Fisher Scientific).

#### Target Details

Target:	ACAT1
---------	-------

## Target Details

---

Alternative Name:	ACAT1 ( <a href="#">ACAT1 Products</a> )
Background:	Description: Plays a major role in ketone body metabolism. Gene: ACAT1
Molecular Weight:	45 kDa
Gene ID:	38
UniProt:	<a href="#">P24752</a>

## Application Details

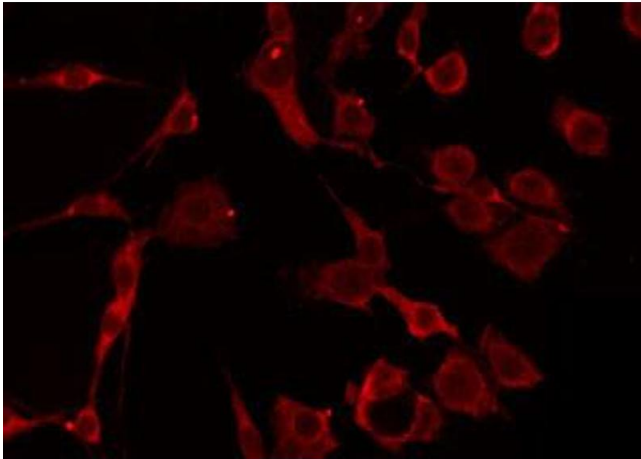
---

Application Notes:	WB 1:500-1:1000, IF/ICC 1:100-1:500, IHC 1:50-1:200, ELISA(peptide) 1:20000-1:40000
Restrictions:	For Research Use only

## Handling

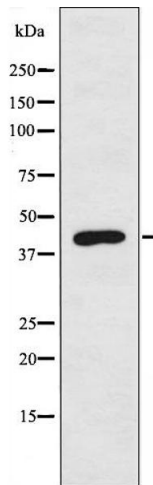
---

Format:	Liquid
Concentration:	1 mg/mL
Buffer:	Rabbit IgG in phosphate buffered saline , pH 7.4, 150 mM NaCl, 0.02 % sodium azide and 50 % glycerol.
Preservative:	Sodium azide
Precaution of Use:	This product contains Sodium azide: a POISONOUS AND HAZARDOUS SUBSTANCE which should be handled by trained staff only.
Storage:	-20 °C
Storage Comment:	Store at -20 °C. Stable for 12 months from date of receipt.
Expiry Date:	12 months



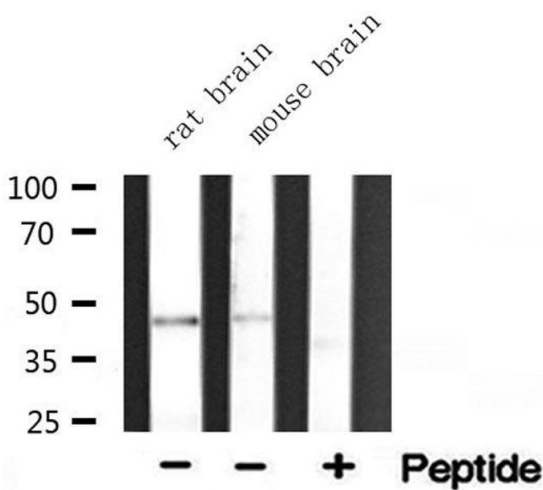
**Immunofluorescence (fixed cells)**

**Image 1.** ABIN6274797 staining HepG2 by IF/ICC. The sample were fixed with PFA and permeabilized in 0.1% Triton X-100,then blocked in 10% serum for 45 minutes at 25°C. The primary antibody was diluted at 1/200 and incubated with the sample for 1 hour at 37°C. An Alexa Fluor 594 conjugated goat anti-rabbit IgG (H+L) Ab, diluted at 1/600, was used as the secondary antibody.



**Western Blotting**

**Image 2.** Western blot analysis of extracts from A549 cells, using ACAT1 antibody.



**Western Blotting**

**Image 3.** Western blot analysis of extracts of various tissue ,using ACAT1 antibody.