

Datasheet for ABIN6258581

anti-beta 2 Adrenergic Receptor antibody (C-Term)**2** Images[Go to Product page](#)

Overview

Quantity:	100 µL
Target:	beta 2 Adrenergic Receptor (ADRB2)
Binding Specificity:	C-Term
Reactivity:	Human, Rat, Mouse
Host:	Rabbit
Clonality:	Polyclonal
Conjugate:	This beta 2 Adrenergic Receptor antibody is un-conjugated
Application:	Western Blotting (WB), ELISA, Immunohistochemistry (IHC), Immunofluorescence (IF), Immunocytochemistry (ICC)

Product Details

Immunogen:	A synthesized peptide derived from human ADRB2, corresponding to a region within C-terminal amino acids.
Isotype:	IgG
Specificity:	ADRB2 Antibody detects endogenous levels of total ADRB2.
Predicted Reactivity:	Rabbit
Purification:	The antiserum was purified by peptide affinity chromatography using SulfoLink™ Coupling Resin (Thermo Fisher Scientific).

Target Details

Target:	beta 2 Adrenergic Receptor (ADRB2)
---------	------------------------------------

Target Details

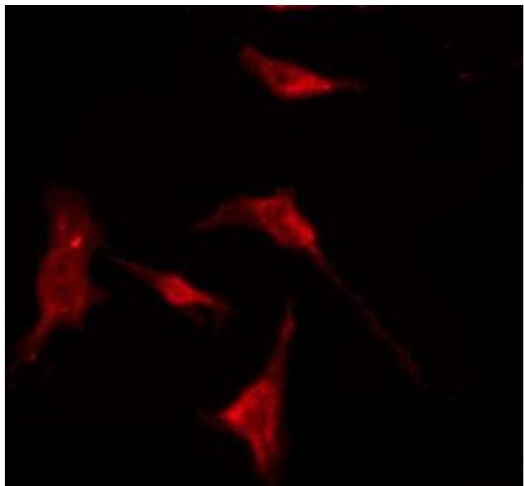
Alternative Name:	ADRB2 (ADRB2 Products)
Background:	Description: Beta-adrenergic receptors mediate the catecholamine-induced activation of adenylate cyclase through the action of G proteins. The beta-2-adrenergic receptor binds epinephrine with an approximately 30-fold greater affinity than it does norepinephrine. Gene: ADRB2
Molecular Weight:	62 kDa
Gene ID:	154
UniProt:	P07550
Pathways:	cAMP Metabolic Process , Synaptic Membrane , Regulation of G-Protein Coupled Receptor Protein Signaling , Brown Fat Cell Differentiation

Application Details

Application Notes:	WB 1:500-1:1000, IF/ICC 1:100-1:500, IHC 1:50-1:200, ELISA(peptide) 1:20000-1:40000
Restrictions:	For Research Use only

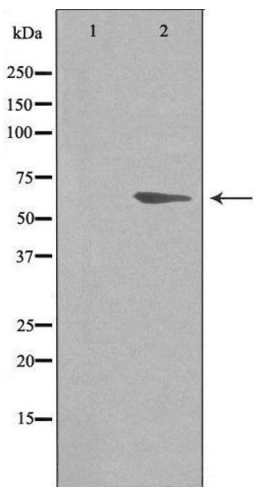
Handling

Format:	Liquid
Concentration:	1 mg/mL
Buffer:	Rabbit IgG in phosphate buffered saline , pH 7.4, 150 mM NaCl, 0.02 % sodium azide and 50 % glycerol.
Preservative:	Sodium azide
Precaution of Use:	This product contains Sodium azide: a POISONOUS AND HAZARDOUS SUBSTANCE which should be handled by trained staff only.
Storage:	-20 °C
Storage Comment:	Store at -20 °C. Stable for 12 months from date of receipt.
Expiry Date:	12 months



Immunofluorescence (fixed cells)

Image 1. ABIN6274584 staining HuvEc by IF/ICC. The sample were fixed with PFA and permeabilized in 0.1% Triton X-100, then blocked in 10% serum for 45 minutes at 25°C. The primary antibody was diluted at 1/200 and incubated with the sample for 1 hour at 37°C. An Alexa Fluor 594 conjugated goat anti-rabbit IgG (H+L) Ab, diluted at 1/600, was used as the secondary antibody.



Western Blotting

Image 2. Western blot analysis of extracts from HeLa cells, using ADRB2 antibody. The lane on the left is treated with the antigen-specific peptide.