

Datasheet for ABIN6258618  
**anti-CCRK antibody (C-Term)**[Go to Product page](#)

## 1 Image

## Overview

Quantity:	100 µL
Target:	CCRK (CDK20)
Binding Specificity:	C-Term
Reactivity:	Human, Mouse, Rat
Host:	Rabbit
Clonality:	Polyclonal
Conjugate:	This CCRK antibody is un-conjugated
Application:	Western Blotting (WB), ELISA

## Product Details

Immunogen:	A synthesized peptide derived from human CDK20, corresponding to a region within C-terminal amino acids.
Isotype:	IgG
Specificity:	CDK20 Antibody detects endogenous levels of total CDK20.
Predicted Reactivity:	Pig,Zebrafish,Bovine,Sheep,Rabbit,Dog,Xenopus
Purification:	The antiserum was purified by peptide affinity chromatography using SulfoLink™ Coupling Resin (Thermo Fisher Scientific).

## Target Details

Target:	CCRK (CDK20)
---------	--------------

## Target Details

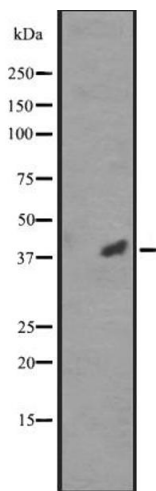
Alternative Name:	CDK20 ( <a href="#">CDK20 Products</a> )
Background:	<p>Description: Required for high-level Shh responses in the developing neural tube. Together with TBC1D32, controls the structure of the primary cilium by coordinating assembly of the ciliary membrane and axoneme, allowing GLI2 to be properly activated in response to SHH signaling (By similarity). Involved in cell growth. Activates CDK2, a kinase involved in the control of the cell cycle, by phosphorylating residue 'Thr-160'.</p> <p>Gene: CDK20</p>
Molecular Weight:	39 kDa
Gene ID:	23552
UniProt:	<a href="#">Q8IZL9</a>

## Application Details

Application Notes:	WB 1:500-1:2000, ELISA(peptide) 1:20000-1:40000
Restrictions:	For Research Use only

## Handling

Format:	Liquid
Concentration:	1 mg/mL
Buffer:	Rabbit IgG in phosphate buffered saline, pH 7.4, 150 mM NaCl, 0.02 % sodium azide and 50 % glycerol.
Preservative:	Sodium azide
Precaution of Use:	This product contains Sodium azide: a POISONOUS AND HAZARDOUS SUBSTANCE which should be handled by trained staff only.
Storage:	-20 °C
Expiry Date:	12 months



Western Blotting

**Image 1.** Western blot analysis of CCRK expression in RPMI-8226 cell lysate ;,;The lane on the left is treated with the antigen-specific peptide.