

Datasheet for ABIN6258629  
**anti-Elf4 antibody (Internal Region)**

## 3 Images

[Go to Product page](#)

## Overview

Quantity:	100 µL
Target:	Elf4
Binding Specificity:	Internal Region
Reactivity:	Human, Mouse, Rat
Host:	Rabbit
Clonality:	Polyclonal
Conjugate:	This Elf4 antibody is un-conjugated
Application:	Western Blotting (WB), ELISA, Immunohistochemistry (IHC), Immunofluorescence (IF), Immunocytochemistry (ICC)

## Product Details

Immunogen:	A synthesized peptide derived from human ELF4, corresponding to a region within the internal amino acids.
Isotype:	IgG
Specificity:	ELF4 Antibody detects endogenous levels of total ELF4.
Predicted Reactivity:	Pig,Bovine,Horse,Sheep,Rabbit,Dog
Purification:	The antiserum was purified by peptide affinity chromatography using SulfoLink™ Coupling Resin (Thermo Fisher Scientific).

## Target Details

Target:	Elf4
---------	------

## Target Details

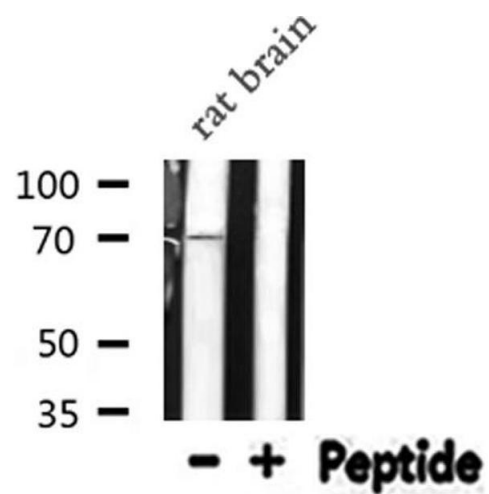
Alternative Name:	ELF4 ( <a href="#">Elf4 Products</a> )
Background:	<p>Description: Transcriptional activator that binds to DNA sequences containing the consensus 5'-WGGA-3'. Transactivates promoters of the hematopoietic growth factor genes CSF2, IL3, IL8, and of the bovine lysozyme gene. Acts synergistically with RUNX1 to transactivate the IL3 promoter (By similarity). Also transactivates the PRF1 promoter in natural killer (NK) cells. Plays a role in the development and function of NK and NK T-cells and in innate immunity. Controls the proliferation and homing of CD8+ T-cells via the Kruppel-like factors KLF4 and KLF2 (By similarity). Controls cell senescence in a p53-dependent manner. Can also promote cellular transformation through inhibition of the p16 pathway.</p> <p>Gene: ELF4</p>
Molecular Weight:	70 kDa
Gene ID:	2000
UniProt:	<a href="#">Q99607</a>
Pathways:	<a href="#">Positive Regulation of Endopeptidase Activity</a>

## Application Details

Application Notes:	WB 1:500-1:1000, IF/ICC 1:100-1:500, IHC 1:50-1:200, ELISA(peptide) 1:20000-1:40000
Restrictions:	For Research Use only

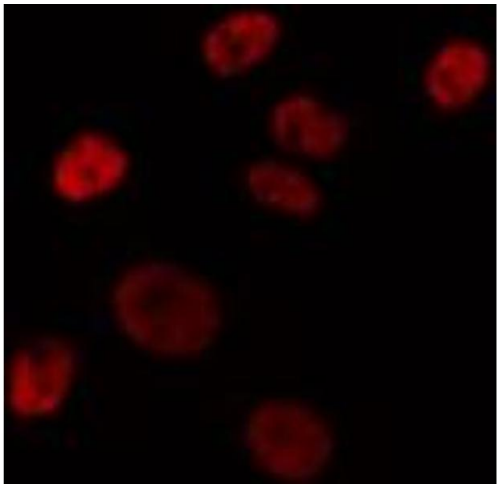
## Handling

Format:	Liquid
Concentration:	1 mg/mL
Buffer:	Rabbit IgG in phosphate buffered saline , pH 7.4, 150 mM NaCl, 0.02 % sodium azide and 50 % glycerol.
Preservative:	Sodium azide
Precaution of Use:	This product contains Sodium azide: a POISONOUS AND HAZARDOUS SUBSTANCE which should be handled by trained staff only.
Storage:	-20 °C
Storage Comment:	Store at -20 °C. Stable for 12 months from date of receipt.
Expiry Date:	12 months



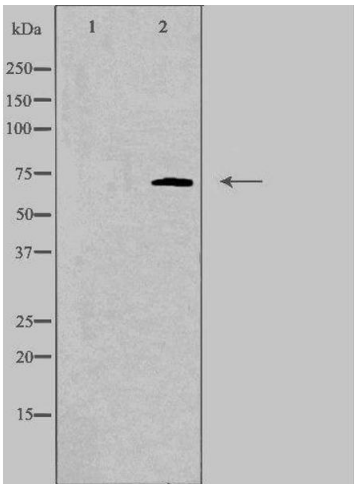
Western Blotting

**Image 1.** Western blot analysis of ELF4 expression in Rat brain lysate



Immunofluorescence (fixed cells)

**Image 2.** ABIN6275742 staining HepG2 by IF/ICC. The sample were fixed with PFA and permeabilized in 0.1% Triton X-100, then blocked in 10% serum for 45 minutes at 25°C. The primary antibody was diluted at 1/200 and incubated with the sample for 1 hour at 37°C. An Alexa Fluor 594 conjugated goat anti-rabbit IgG (H+L) Ab, diluted at 1/600, was used as the secondary antibody.



Western Blotting

**Image 3.** Western blot analysis of extracts from Jurkat cells, using ELF4 antibody.