

Datasheet for ABIN6258640
anti-RHOD antibody (Internal Region)[Go to Product page](#)

1 Image

Overview

Quantity:	100 µL
Target:	RHOD
Binding Specificity:	Internal Region
Reactivity:	Human
Host:	Rabbit
Clonality:	Polyclonal
Conjugate:	This RHOD antibody is un-conjugated
Application:	Western Blotting (WB), ELISA, Immunofluorescence (IF), Immunocytochemistry (ICC)

Product Details

Immunogen:	A synthesized peptide derived from human RHOD, corresponding to a region within the internal amino acids.
Isotype:	IgG
Specificity:	RHOD Antibody detects endogenous levels of total RHOD.
Predicted Reactivity:	Pig,Bovine,Horse,Sheep,Dog
Purification:	The antiserum was purified by peptide affinity chromatography using SulfoLink™ Coupling Resin (Thermo Fisher Scientific).

Target Details

Target:	RHOD
---------	------

Target Details

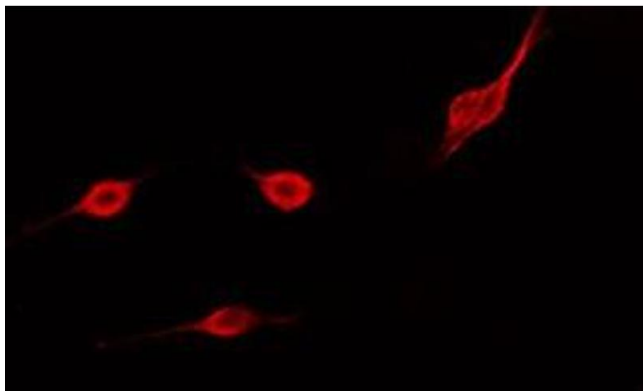
Alternative Name:	RHOD (RHOD Products)
Background:	<p>Description: Involved in endosome dynamics. May coordinate membrane transport with the function of the cytoskeleton. Involved in the internalization and trafficking of activated tyrosine kinase receptors such as PDGFRB. Participates in the reorganization of actin cytoskeleton, the function seems to involve WHAMM and includes regulation of filopodia formation and actin filament bundling. Can modulate the effect of DAPK3 in reorganization of actin cytoskeleton and focal adhesion dissolution.</p> <p>Gene: RHOD</p>
Molecular Weight:	25 kDa
Gene ID:	29984
UniProt:	O00212

Application Details

Application Notes:	WB 1:500-1:1000, IF/ICC 1:100-1:500, ELISA(peptide) 1:20000-1:40000
Restrictions:	For Research Use only

Handling

Format:	Liquid
Concentration:	1 mg/mL
Buffer:	Rabbit IgG in phosphate buffered saline , pH 7.4, 150 mM NaCl, 0.02 % sodium azide and 50 % glycerol.
Preservative:	Sodium azide
Precaution of Use:	This product contains Sodium azide: a POISONOUS AND HAZARDOUS SUBSTANCE which should be handled by trained staff only.
Storage:	-20 °C
Storage Comment:	Store at -20 °C. Stable for 12 months from date of receipt.
Expiry Date:	12 months



Immunofluorescence (fixed cells)

Image 1. ABIN6275503 staining COLO205 cells by IF/ICC.

The sample were fixed with PFA and permeabilized in 0.1% Triton X-100, then blocked in 10% serum for 45 minutes at 25°C. The primary antibody was diluted at 1/200 and incubated with the sample for 1 hour at 37°C. An Alexa Fluor 594 conjugated goat anti-rabbit IgG (H+L) antibody (Cat.# S0006), diluted at 1/600, was used as secondary antibody.