

Datasheet for ABIN6258642  
**anti-SERPINB12 antibody (N-Term)**[Go to Product page](#)

## 1 Image

## Overview

|                      |  |
|----------------------|--|
| Quantity:            | 100 µL   |
| Target:              | SERPINB12  |
| Binding Specificity: | N-Term   |
| Reactivity:          | Human  |
| Host:                | Rabbit   |
| Clonality:           | Polyclonal   |
| Conjugate:           | This SERPINB12 antibody is un-conjugated   |
| Application:         | ELISA, Western Blotting (WB), Immunofluorescence (IF), Immunocytochemistry (ICC) |

## Product Details

|               |   |
|---------------|---|
| Immunogen:    | A synthesized peptide derived from human SERPINB12, corresponding to a region within N-terminal amino acids.              |
| Isotype:      | IgG   |
| Specificity:  | SERPINB12 Antibody detects endogenous levels of total SERPINB12.  |
| Purification: | The antiserum was purified by peptide affinity chromatography using SulfoLink™ Coupling Resin (Thermo Fisher Scientific). |

## Target Details

|                   |  |
|-------------------|--|
| Target:           | SERPINB12  |
| Alternative Name: | SERPINB12 ( <a href="#">SERPINB12 Products</a> ) |

## Target Details

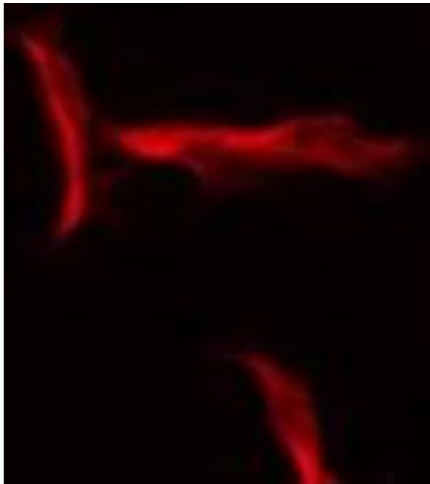
|                   |   |
|-------------------|---|
| Background:       | Description: Inhibits trypsin and plasmin, but not thrombin, coagulation factor Xa, or urokinase-type plasminogen activator.<br>Gene: SERPINB12 |
| Molecular Weight: | 46 kDa  |
| Gene ID:          | 89777   |
| UniProt:          | <a href="#">Q96P63</a>  |

## Application Details

|                    |   |
|--------------------|---|
| Application Notes: | WB 1:500-1:1000, IF/ICC 1:100-1:500, ELISA(peptide) 1:20000-1:40000 |
| Restrictions:      | For Research Use only   |

## Handling

|                    |  |
|--------------------|--|
| Format:            | Liquid   |
| Concentration:     | 1 mg/mL  |
| Buffer:            | Rabbit IgG in phosphate buffered saline , pH 7.4, 150 mM NaCl, 0.02 % sodium azide and 50 % glycerol.                  |
| Preservative:      | Sodium azide   |
| Precaution of Use: | This product contains Sodium azide: a POISONOUS AND HAZARDOUS SUBSTANCE which should be handled by trained staff only. |
| Storage:           | -20 °C   |
| Storage Comment:   | Store at -20 °C. Stable for 12 months from date of receipt.  |
| Expiry Date:       | 12 months  |



#### Immunofluorescence (fixed cells)

**Image 1.** ABIN6275554 staining HeLa by IF/ICC. The sample were fixed with PFA and permeabilized in 0.1% Triton X-100, then blocked in 10% serum for 45 minutes at 25°C. The primary antibody was diluted at 1/200 and incubated with the sample for 1 hour at 37°C. An Alexa Fluor 594 conjugated goat anti-rabbit IgG (H+L) Ab, diluted at 1/600, was used as the secondary antibody