

Datasheet for ABIN6258643
anti-SFRP2 antibody (Internal Region)[Go to Product page](#)

2 Images

Overview

| | |
|----------------------|--|
| Quantity: | 100 µL |
| Target: | SFRP2 |
| Binding Specificity: | Internal Region |
| Reactivity: | Human, Mouse, Rat |
| Host: | Rabbit |
| Clonality: | Polyclonal |
| Conjugate: | This SFRP2 antibody is un-conjugated |
| Application: | Western Blotting (WB), ELISA, Immunohistochemistry (IHC), Immunofluorescence (IF), Immunocytochemistry (ICC) |

Product Details

| | |
|-----------------------|---|
| Immunogen: | A synthesized peptide derived from human SFRP2, corresponding to a region within the internal amino acids. |
| Isotype: | IgG |
| Specificity: | SFRP2 Antibody detects endogenous levels of total SFRP2. |
| Predicted Reactivity: | Pig,Bovine,Horse,Sheep,Rabbit,Dog,Xenopus |
| Purification: | The antiserum was purified by peptide affinity chromatography using SulfoLink™ Coupling Resin (Thermo Fisher Scientific). |

Target Details

| | |
|---------|-------|
| Target: | SFRP2 |
|---------|-------|

Target Details

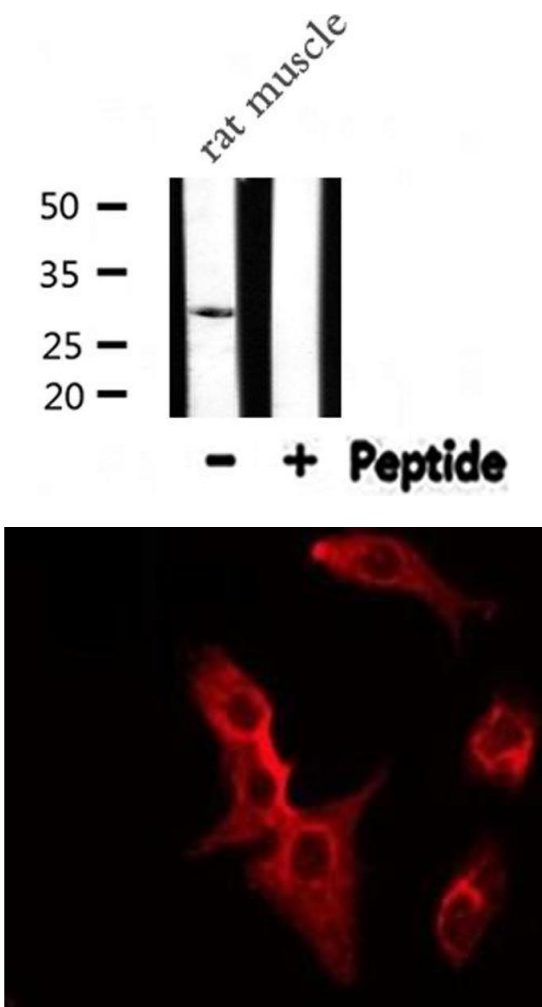
| | |
|-------------------|--|
| Alternative Name: | SFRP2 (SFRP2 Products) |
| Background: | <p>Description: Soluble frizzled-related proteins (sFRPS) function as modulators of Wnt signaling through direct interaction with Wnts. They have a role in regulating cell growth and differentiation in specific cell types. SFRP2 may be important for eye retinal development and for myogenesis.</p> <p>Gene: SFRP2</p> |
| Molecular Weight: | 30 kDa |
| Gene ID: | 6423 |
| UniProt: | Q96HF1 |
| Pathways: | WNT Signaling , Tube Formation , Positive Regulation of Endopeptidase Activity , Negative Regulation of intrinsic apoptotic Signaling , Positive Regulation of fat Cell Differentiation |

Application Details

| | |
|--------------------|---|
| Application Notes: | WB 1:500-1:1000, IF/ICC 1:100-1:500, IHC 1:50-1:200, ELISA(peptide) 1:20000-1:40000 |
| Restrictions: | For Research Use only |

Handling

| | |
|--------------------|--|
| Format: | Liquid |
| Concentration: | 1 mg/mL |
| Buffer: | Rabbit IgG in phosphate buffered saline , pH 7.4, 150 mM NaCl, 0.02 % sodium azide and 50 % glycerol. |
| Preservative: | Sodium azide |
| Precaution of Use: | This product contains Sodium azide: a POISONOUS AND HAZARDOUS SUBSTANCE which should be handled by trained staff only. |
| Storage: | -20 °C |
| Storage Comment: | Store at -20 °C. Stable for 12 months from date of receipt. |
| Expiry Date: | 12 months |



Western Blotting

Image 1. Western blot analysis of SFRP2 expression in Rat muscle lysate

Immunofluorescence (fixed cells)

Image 2. ABIN6275515 staining HeLa by IF/ICC. The sample were fixed with PFA and permeabilized in 0.1% Triton X-100, then blocked in 10% serum for 45 minutes at 25°C. The primary antibody was diluted at 1/200 and incubated with the sample for 1 hour at 37°C. An Alexa Fluor 594 conjugated goat anti-rabbit IgG (H+L) Ab, diluted at 1/600, was used as the secondary antibody